

Using XLReporter with AVEVA Historian

Overview

XLReporter takes alarm values from the AVEVA Historian to populate workbooks, periodically or on event, without needing Excel. The award-winning reporting software turns raw data into industrial metrics which are used for compliance, regulatory, improvements and operations.

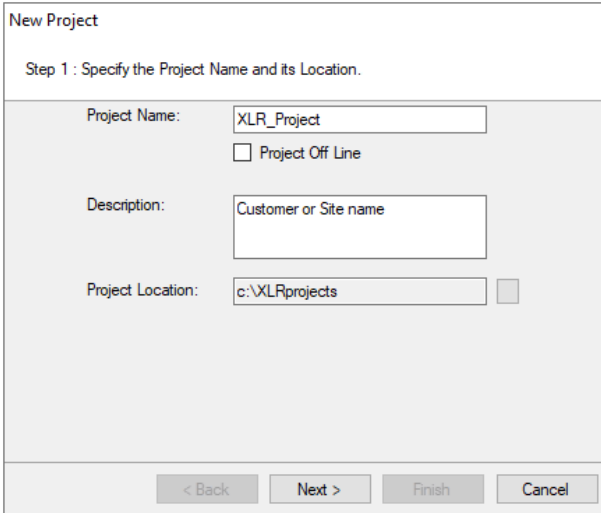
Complete reports are distributed automatically by email, FTP, file server and printers. With the Web Portal, reports are viewed or produced on-demand from any device supporting a web browser such as a mobile phone, tablet, desktop or an InTouch HMI display.

Create a Project

From the **XLReporter Project Explorer** select **File, New** to start the **Project Wizard**. This will give step-by-step instructions on creating a project.

Step 1

- Enter a **Project Name** and **Description** (optional).



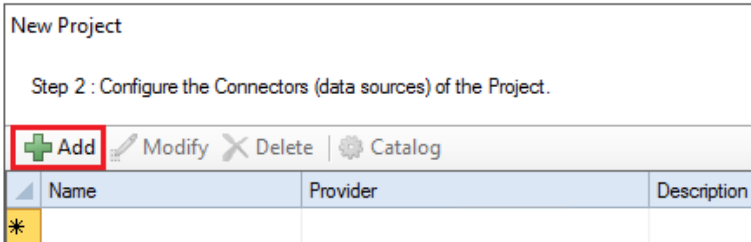
The screenshot shows a 'New Project' dialog box with the following fields and options:

- Project Name:** XLR_Project
- Project Off Line
- Description:** Customer or Site name
- Project Location:** c:\XLRprojects

At the bottom, there are four buttons: < Back, Next >, Finish, and Cancel.

Step 2

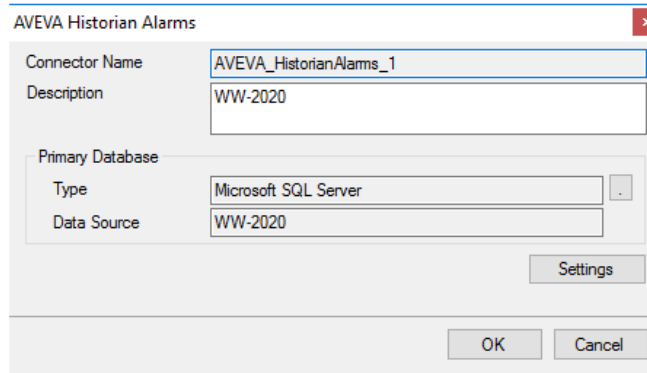
- Configure the data connector, click **Add**



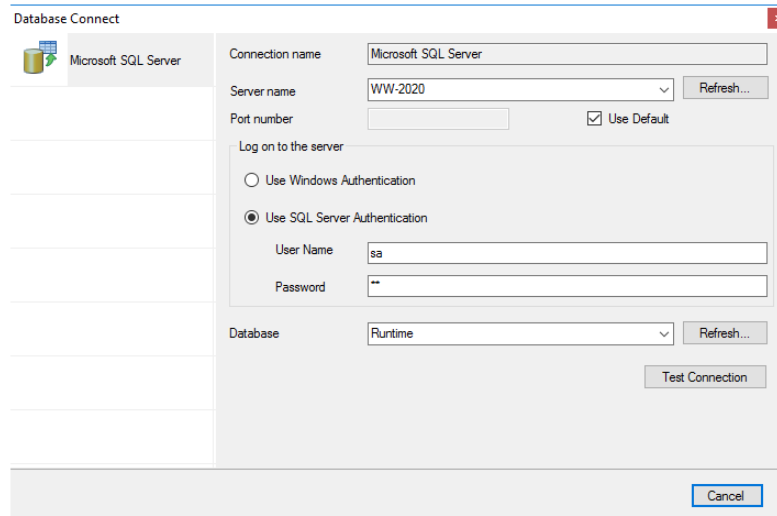
The screenshot shows a 'New Project' dialog box with the following elements:

- Step 2 : Configure the Connectors (data sources) of the Project.**
- Buttons: + Add, Modify, Delete, and Catalog.
- A table with columns: Name, Provider, and Description.
- The first row of the table is highlighted in yellow and contains an asterisk (*).

Select **AVEVA, AVEVA Historian Alarms**.



- Use the browse button (...) to define the **Primary Database**.



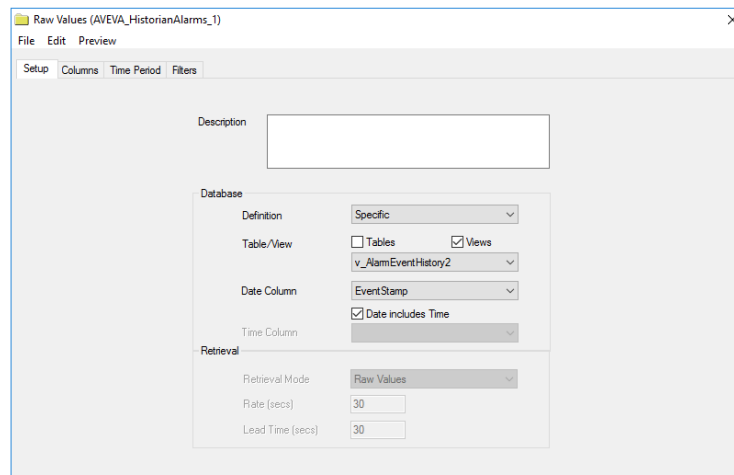
- Connect to the AVEVA Historian. If the version of AVEVA Historian is prior to 2014 R2, set the **Database** as **A2ALMDB**, otherwise set it to **Runtime**.

Verify Data Communication

To verify communication with the Alarms and Events Server, open the **Project Explorer** and select the **Tools** tab. Open **Connector Groups**. Select the **InTouch Alarms** connector and then select **Add**.

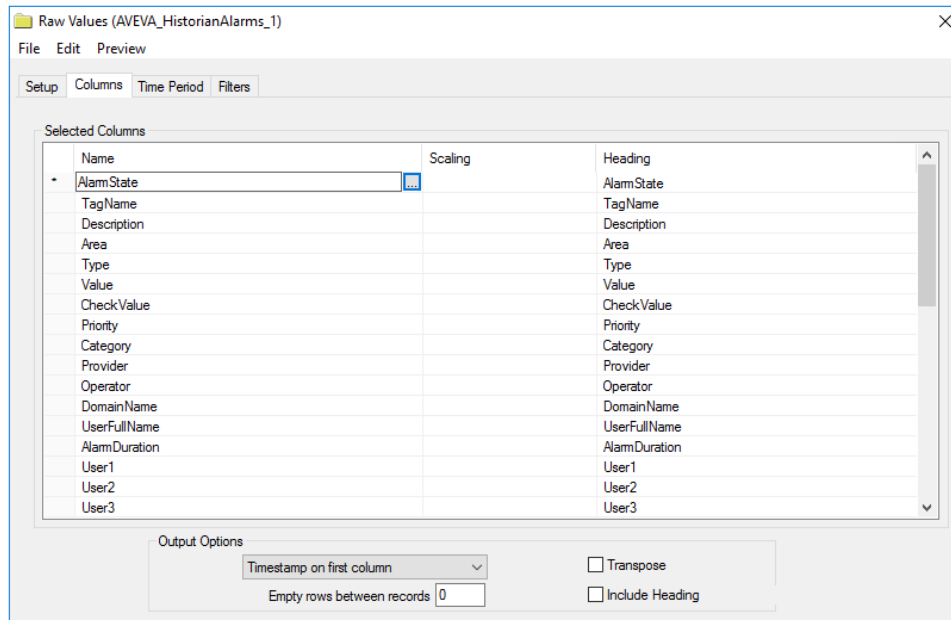
Set the **Group Type** to *Raw Values* and click **OK**.

Under the **Setup** tab:



- In the Database section, for Table/View, select *v_AlarmEventHistory2*.
- Set **Date Column** to *EventStamp*.

Under the **Columns** tab:



- Select the first row under the **Name** column
- Click the browse pushbutton ([...]).
- In the Tag Browser expand **Online, v_AlarmEventHistory2** and add **Items** from the lower left.
- Click **OK** to add these to the group.

To retrieve data, select **Preview**. In the **Preview** window, use the data picker to select a date and time where alarms are recorded in the database. Click **Refresh** to view data. The first 60 alarms starting at the date and time specified should be displayed.