

## Using XLReporter with AVEVA Historian

### Overview

**XLReporter** takes historical values from AVEVA Historian to populate workbooks, periodically or on event, without needing Excel. The award-winning reporting software turns raw data into industrial metrics which are used for compliance, regulatory, improvements and operations.

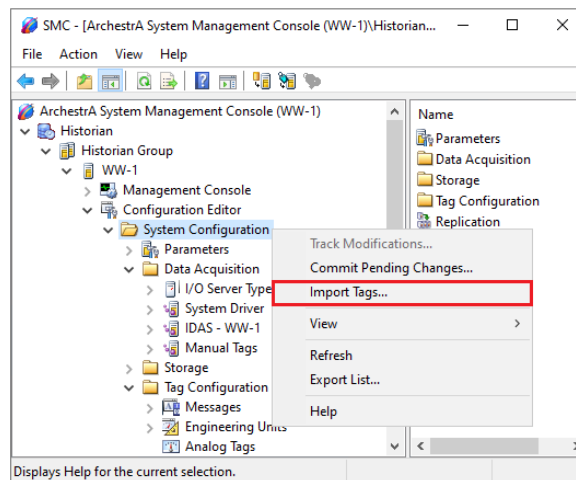
Complete reports are distributed automatically by email, FTP, file server and printers. With the Web Portal, reports are viewed or produced on-demand from any device supporting a web browser such as a mobile phone or tablet.

### Set up AVEVA Historian

AVEVA Historian stores data in a Microsoft SQL Server database. Tag data collection into the historian is configured in the AVEVA System Platform Management Console.

This is opened from the **AVEVA** program group by selecting **AVEVA, System Platform Management Console**.

Any tag in the InTouch Tag Dictionary can be logged by the AVEVA Historian by importing the tag. To import,



- Expand **Historian, Historian Group**, the Historian machine name, **Configuration Editor**.
- Select **System Configuration** right-click and select **Import Tags**.
- Follow the **Tag Import Wizard**.

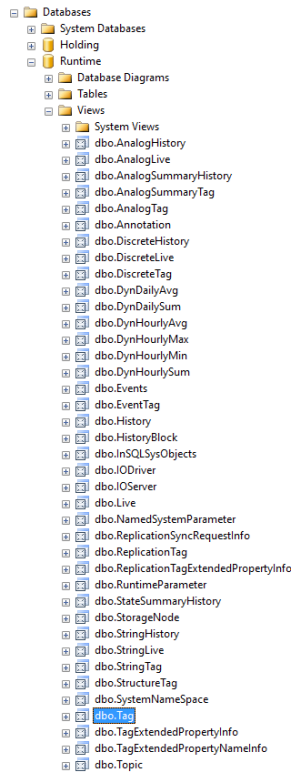
### SQL Server Prerequisites

#### Verify Database

To verify, open **Microsoft SQL Server Management Studio** and connect to the SQL Server instance where the AVEVA Historian database is configured.

Once connected,

- Expand the **Runtime** database.
- Expand **Tables**.
- Select the **Tag** table.



Right click the **Tag** table and choose *SELECT TOP 1000 Rows*. This should display data from the table representing the tags configured in the historian.

If the database or table does not exist or no data is displayed, contact AVEVA technical support to troubleshoot and correct these issues.

## SQL Server Considerations

When using SQL Server there are some things to take into consideration including remote connectivity and user authentication. For information on what to consider, see the technical note: [How to Configure Microsoft SQL Server](#).

## Create a Project

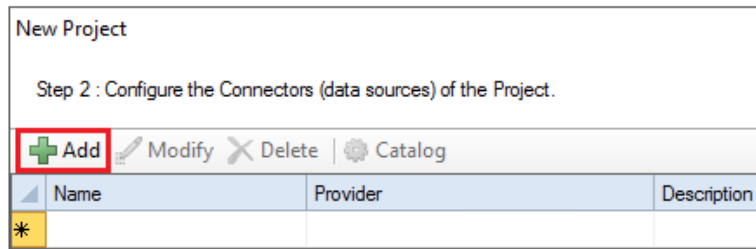
From the **XLReporter Project Explorer** select **File, New** to start the **Project Wizard**. This will give step-by-step instructions on creating a project

### Step 1

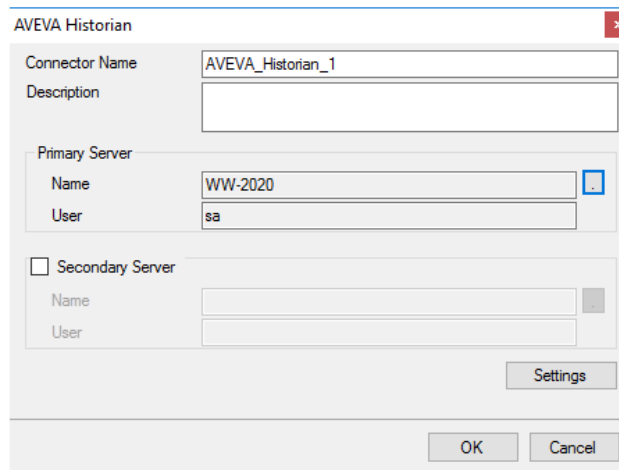
- Enter a **Project Name** and **Description** (optional).

## Step 2

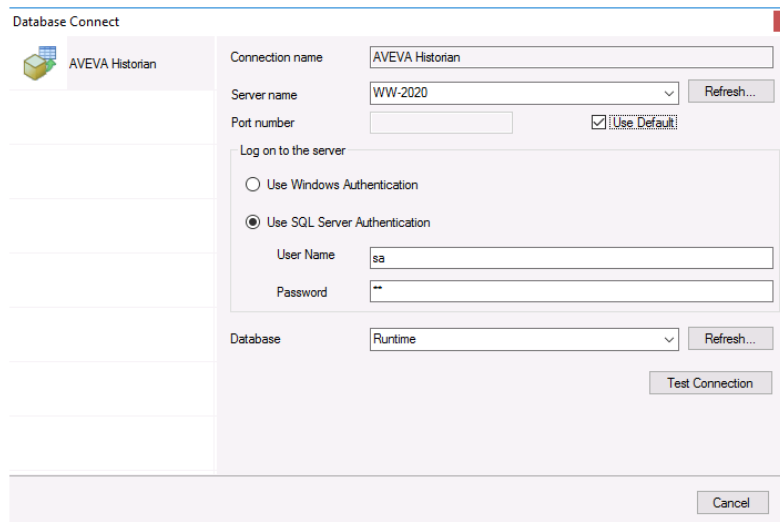
- Configure the data connector, click **Add**.



Select **AVEVA**, **AVEVA Historian**.



- Under **Primary Server** click the browse pushbutton ([...]) for **Name**.



- Select the **Server Name** as the machine name for the Historian.
- For **Log on to the server**, specify the proper authentication.
- Leave Database as *Runtime*.
- Click **Test Connection** to verify connectivity and return to the connector setup.

## Verify the Data Connector

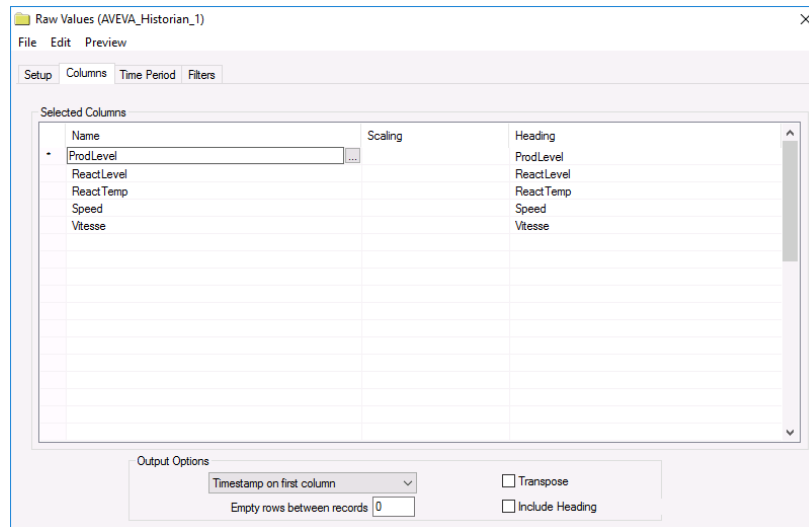
**XLReporter** retrieves data from the **Data Connector** using a **History Group**.

From the **XLReporter Project Explorer** select, **Tools, Connector Groups**

Select the *AVEVA Historian* connector and then select **Add**.

- Set the **Type Raw Values** and click **OK**.

On the **Columns** tab of the group, select the tag **Name(s)**.



Select **Preview**, pick a *Start* date and click **Refresh**.

Date	ProdLevel	ReactLevel	ReactTemp	Speed
1/1/2021	75.9276733398438	75.9276733398438	30.9276752471924	89.5892181396484
1/1/2021 12:01:00 AM	76.8838729658398	76.3549118041992	29.9913120269775	89.654182434082
1/1/2021 12:02:00 AM	77.2835311889648	75.4340972900391	32.9913101196289	89.7176818847656
1/1/2021 12:03:00 AM	76.8570785522461	75.2435684204102	33.2157096862793	89.7797012329102
1/1/2021 12:04:00 AM	75.902458190918	76.2633972167969	32.3946914672852	89.8402481079102
1/1/2021 12:05:00 AM	75.1489639282227	76.0503540039063	31.4152488708496	89.8993148803711
1/1/2021 12:06:00 AM	75.2268218994141	75.2172317504883	30.435985651855	89.9568862915039
1/1/2021 12:07:00 AM	76.1041793823242	76.0343551635742	29.6069221496582	90.0129623413086
1/1/2021 12:08:00 AM	77.0195465087891	76.267333984375	32.6069221496582	90.0675354003906
1/1/2021 12:09:00 AM	77.1164932250977	75.3260116577148	33.5460395812988	90.12060546875
1/1/2021 12:10:00 AM	76.303108215332	76.0857620239258	32.6238327026367	90.1721649169922
1/1/2021 12:11:00 AM	75.4487228393555	76.2298812866211	33.5269889831543	90.2222061157227
1/1/2021 12:12:00 AM	75.5267562866211	75.3969497680664	32.5475959777832	90.2707214355468
1/1/2021 12:13:00 AM	76.4824752807617	76.3757858276367	33.0922088623047	90.3177108764648
1/1/2021 12:14:00 AM	77.1834335327148	75.9113388061523	34.0039291381836	90.363166809082
1/1/2021 12:15:00 AM	76.7566604614258	75.7215042114258	34.2352561950684	90.4070892333984
1/1/2021 12:16:00 AM	75.7857055664063	76.5048904418945	34.1800575256348	90.4494705200195
1/1/2021 12:17:00 AM	75.6424560546875	75.5304107666016	34.4343910217285	90.4903106689453
1/1/2021 12:18:00 AM	76.5703506469727	76.4585342407227	35.3664703369141	90.5295944213867
1/1/2021 12:19:00 AM	77.2122192382813	75.864128112793	35.8495445251465	90.5673294067383