

Using XLReporter with AVEVA InTouch

Overview

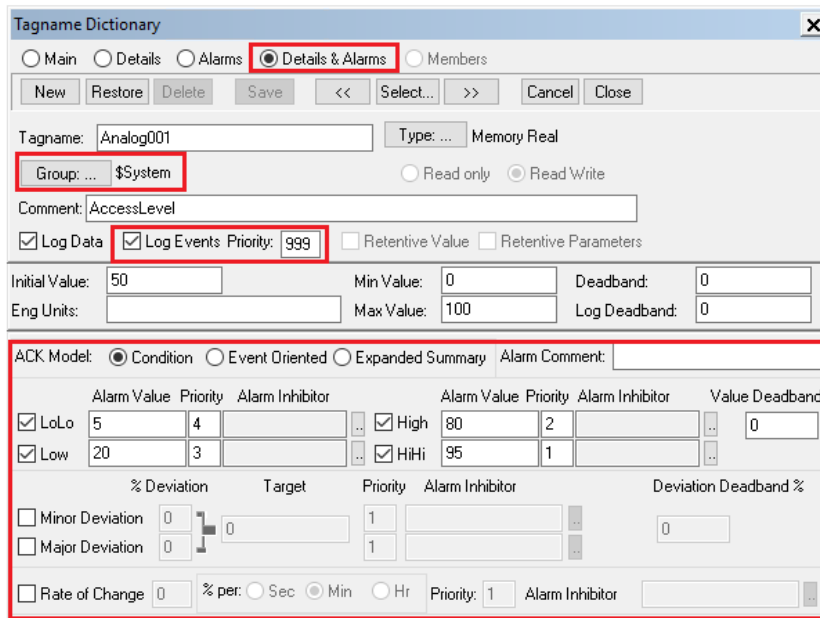
XLReporter takes alarm values from the InTouch to populate workbooks, periodically or on event, without needing Excel. The award-winning reporting software turns raw data into industrial metrics which are used for compliance, regulatory, improvements and operations.

Complete reports are distributed automatically by email, FTP, file server and printers. With the Web Portal, reports are viewed or produced on-demand from any device supporting a web browser such as a mobile phone, tablet, desktop or an InTouch HMI display.

InTouch Alarm Configuration

To configure alarm conditions for InTouch tags, from the **AVEVA InTouch HMI** program group, open **InTouch WindowMaker**.

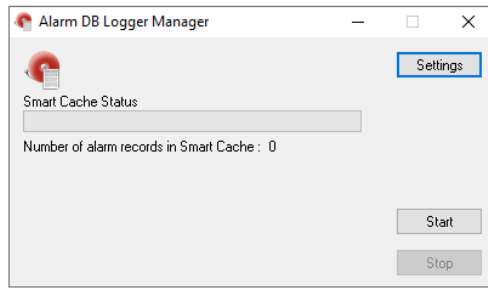
Select **Special, Tagname Dictionary** to open the **Tagname Dictionary** and select a tag.



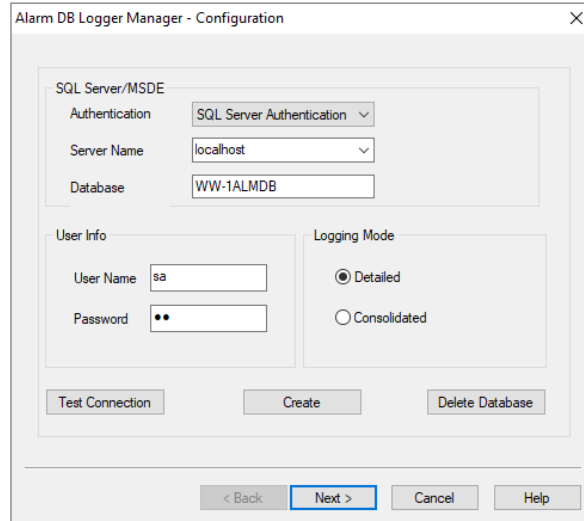
- Click the **Details & Alarms** option at the top.
- Click **Group** to select the group for this tag.
- Check **Log Events** and set the **Priority**.
- Configure the alarm details at the bottom.

Database Configuration

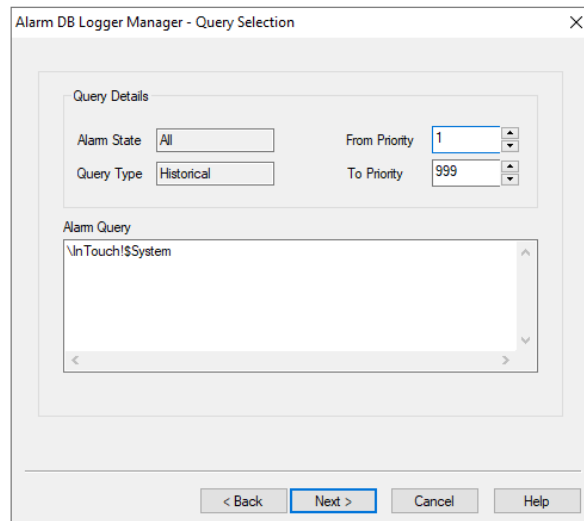
To set up InTouch alarm logging to a database, from the **AVEVA InTouch HMI** program group, open the **Alarm DB Logger Manager**



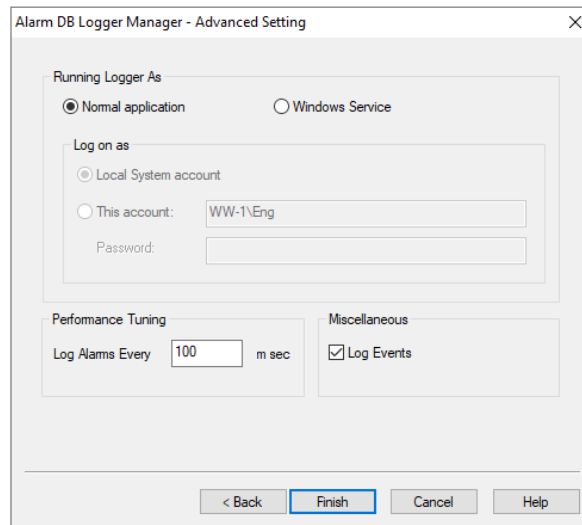
Click **Settings** to configure alarm logging.



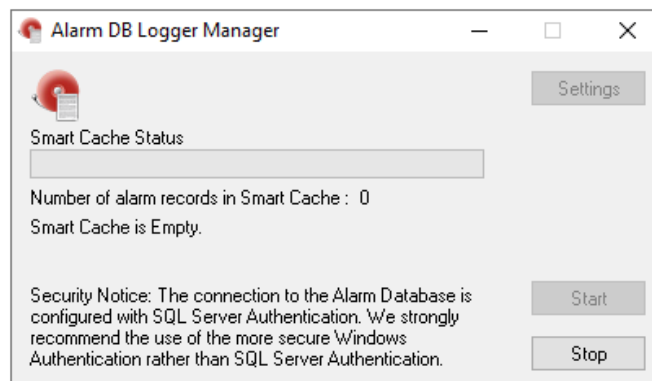
In **Configuration**, specify the **SQL Server** database to log alarms to.



In **Query Selection**, specify the **Group(s)** and **Priority Range** according to the **Tagname Dictionary** configuration.



In **Advanced Settings**, specify the **Log Alarms** rate.



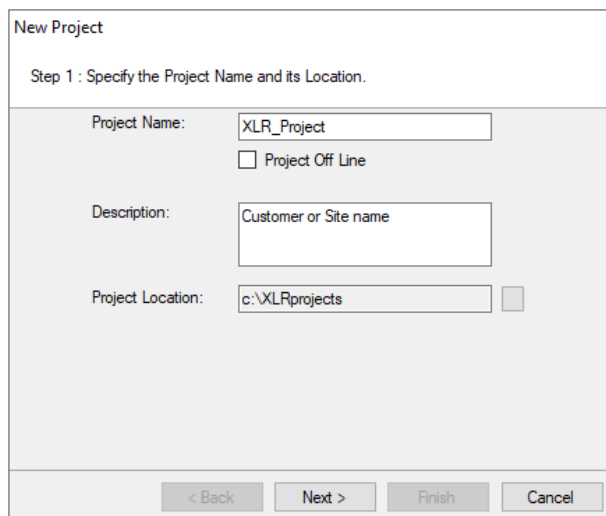
Click **Start** to start the configuration.

Create a Project

From the **XLReporter Project Explorer** select **File, New** to start the **Project Wizard**. This will give step-by-step instructions on creating a project.

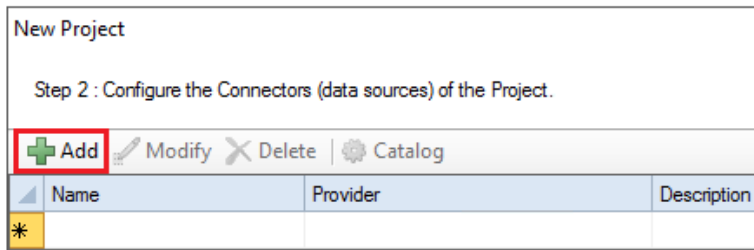
Step 1

- Enter a **Project Name** and **Description** (optional).

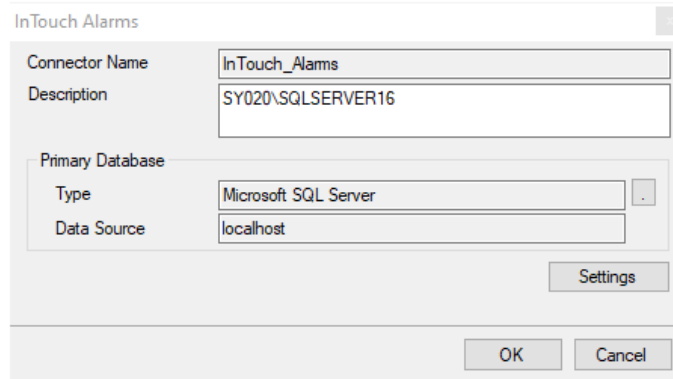


Step 2

- Configure the data connector, click **Add**



Select **AVEVA, InTouch Alarms**.



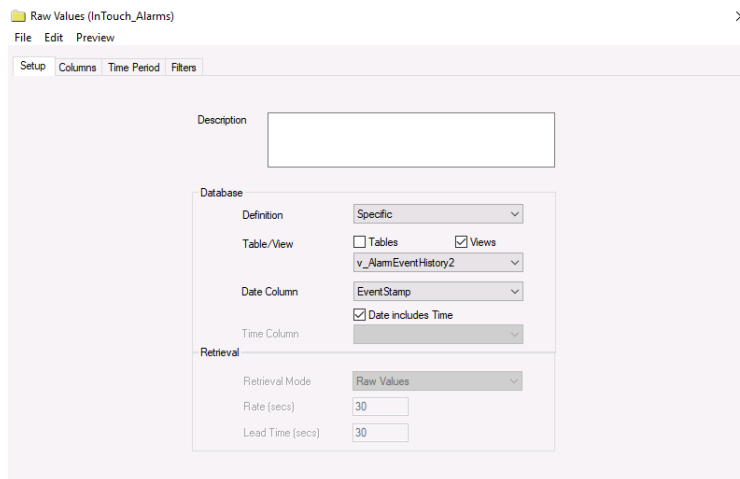
- Set the **Primary Database** according to the configuration in **Alarm DB Logger Manager – Configuration**.

Verify Data Communication

To verify communication with the Alarms and Events Server, open the **Project Explorer** and select the **Tools** tab. Open **Connector Groups**. Select the **InTouch Alarms** connector and then select **Add**.

Set the **Group Type** to *Raw Values* and click **OK**.

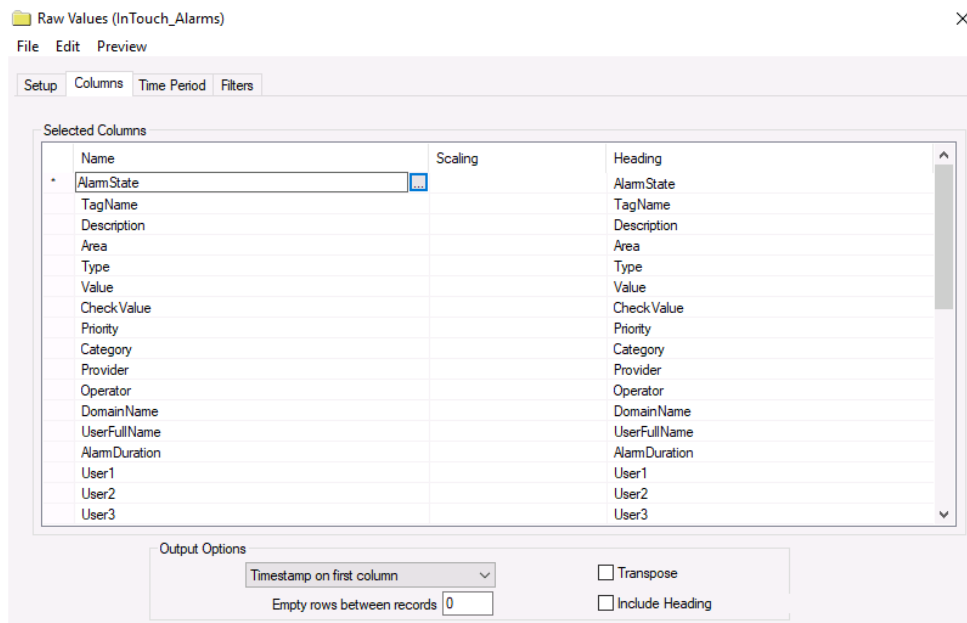
Under the **Setup** tab:



- In the Database section, for Table/View, select *v_AlarmEventHistory* or *v_AlarmEventHistory2*.
- Set **Date Column** to *EventStamp*.

**For more information on the InTouch Alarms database, refer to the InTouch Alarms and Events Guide found in AVEVA Documentation in the Start Menu*

Under the **Columns** tab:



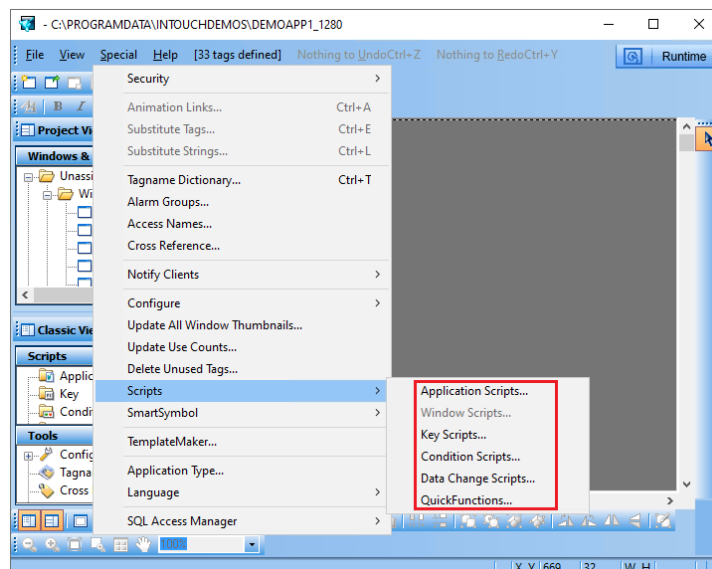
- Select the first row under the **Name** column
- Click the browse pushbutton ([...]).
- In the Tag Browser expand **Online, v_AlarmEventHistory** or **v_AlarmEventHistory2** and add **Items** from the lower left.
- Click **OK** to add these to the group.

To retrieve data, select **Preview**. In the **Preview** window, use the data picker to select a date and time where alarms are recorded in the database. Click **Refresh** to view data. The first 60 alarms starting at the date and time specified should be displayed.

Scheduler Startup

Start the Scheduler from InTouch

The **XLReporter Scheduler** is used to process reports automatically in the background. It is recommended to start the scheduler from an InTouch Script so it starts when the HMI is started. To configure an InTouch script, from the **AVEVA InTouch HMI** program group, open **InTouch WindowMaker**. Scripts configured in **WindowMaker** run when the HMI application is started in **WindowViewer**.



- From **WindowViewer** open **Special, Scripts**
The most straightforward approach is to use an **Application** script with an **On Startup** condition.
- The script syntax to start the **Scheduler** is:

```
StartApp "C:\XLReporter\xlrschedule.exe";
```