

Using XLReporter with CitectSCADA Real Time

Overview

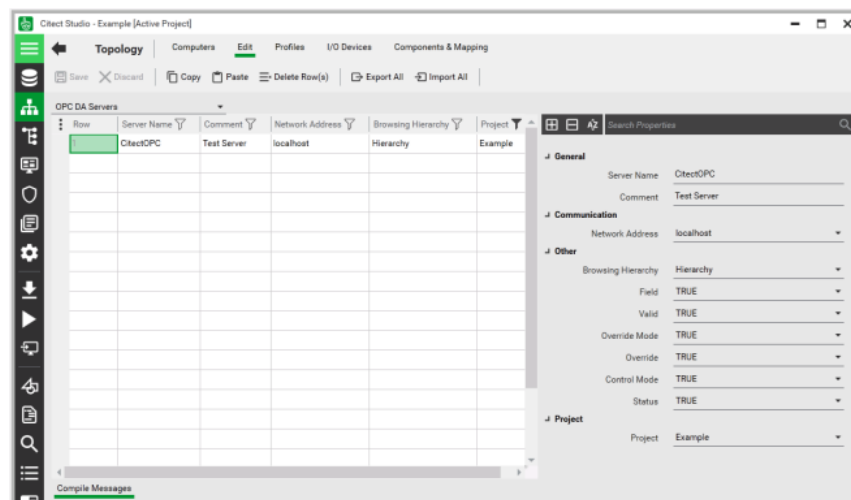
XLReporter takes process values directly from CitectSCADA to a report without requiring a historian or database. This is accomplished by “report-as-you-run” technology that automatically populates a workbook, periodically or on event, without needing Excel. Completed reports are produced in workbook, PDF and web formats.

Set up CitectSCADA

Enable the OPC Server

The OPC server needs to be added to the project; by default it is not enabled.

To enable,



- From the **Citect Studio** select the **Topology** option.
- In the **Topology** page, click **Edit**.
- Select **OPC DA Servers** from the dropdown menu.

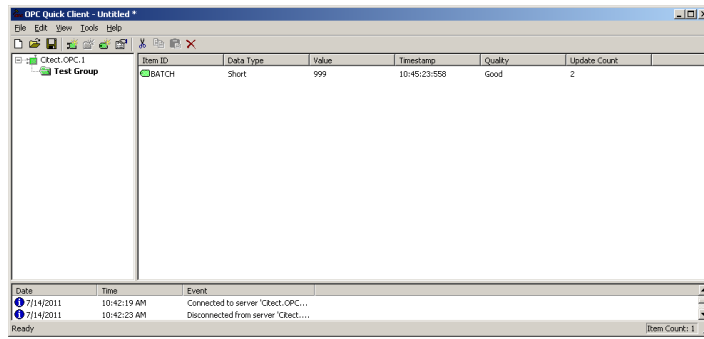
Prerequisites

Verify Communications

To verify communication from CitectSCADA, a generic OPC test client is provided to test the OPC Server.

This client is available from the Tools folder of the **XLReporter** install CD and can be downloaded from www.SyTech.com.

To open, double-click **SampleClientDA.exe**. This opens the **OPC Quick Client** window.



To connect to an OPC server, select **Edit, New Server Connection** to open the **Server Properties** window. Select the CitectSCADA OPC server and click **OK**.

Once the connection is made, select **Edit, New Group**. Specify **Name** and click **OK**.

Click on the group name created, and select **Edit, New Item**. This opens the **Add Items** window. Browse for tags and double click any to select. Once tag selection is complete click **OK** to return to the **OPC Quick Client** window.

All of the selected tags appear along with their real time values, type, quality, and timestamp.

If at any point you experience an issue with this client, contact Citect technical support to troubleshoot and correct these issues.

Create a Project

From the **XLReporter Project Explorer** select **File, New** to start the **Project Wizard**. This will give step-by-step instructions on creating a project

Step 1

- Enter a **Project Name** and **Description** (optional).

New Project

Step 1 : Specify the Project Name and its Location.

Project Name:

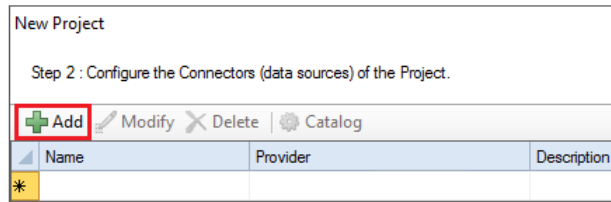
Project Off Line

Description:

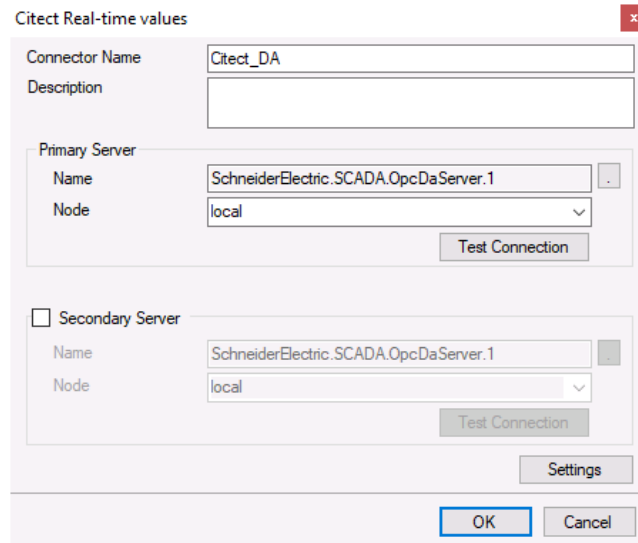
Project Location:

Step 2

- Configure the data connector, click **Add**



Select **Citect**, **Citect Real-time values**.



The connector requires a **Primary Server** which, by default is set to the CitectSCADA OPC server on the local machine.

Remote Communication

If CitectSCADA is installed on a workstation remote from the PLC then set the **Node** to an item in the dropdown list or enter an *IP address*.

The workstation must also have the OPC core components installed. To determine if the core components are installed verify the following file exists:

- 64 - bit OS C:\Windows\SysWow64\OPCEnum.exe
- 32 - bit OS C:\Windows\system32\OPCEnum.exe

If the components are not installed then they are provided in the tools folder of the installation or from www.opcfoundation.org.

Verify Data Communication

To verify communication to Point of View, open the **Project Explorer** and select the **Tools** tab. Launch the **System Check** application.

- Click **Add**
- Choose the *Citect Real-time* connector from the dropdown list.
- Click the pushbutton ([...]) next to **Items** to open the Tag Browser window.
- Select one or more tags, click **OK**.
- Click **Start** to verify the communication.