

## Using XLReporter with Ewon M2WEB Real-time values

### Overview

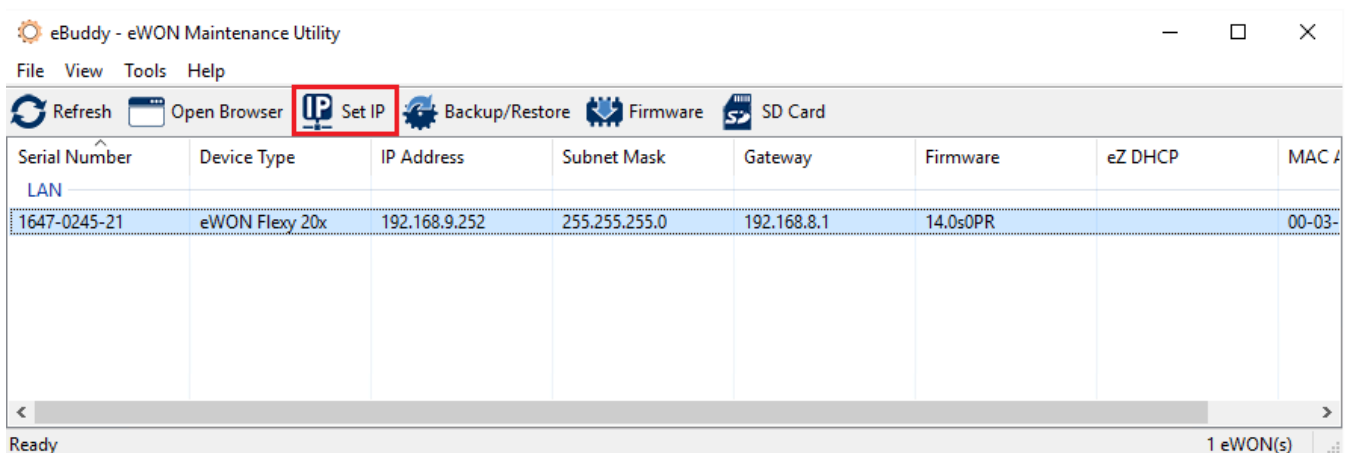
**XLReporter** collects the most recent values in the Ewon Flexy as those values are exposed to the Talk2M network. This allows the software to process values directly from the Ewon device to a report without requiring a historian or database. This is accomplished by “report-as-you-run” technology that automatically populates a workbook, periodically or on event, without needing Excel. Completed reports are produced in workbook, PDF and web formats.

### Set up Ewon

#### Initial Setup

For a new Ewon Flexy there is some basic configuration that has to be performed using **eBuddy**. This is available from the HMS Networks web site.

Connect the LAN Ethernet port to your PC by either using a switch (HMS does not recommend connecting directly via Ethernet cable) or a networked connection and start **eBuddy**.



- In the list, select the connected Flexy device and click **Set IP**.
- Follow the prompts and enter an **IP/Subnet** in the range of the process equipment to which the Flexy is intended for.

The Flexy will reboot to change the IP. When it comes back online, select it again in **eBuddy** and click **Open Browser**.

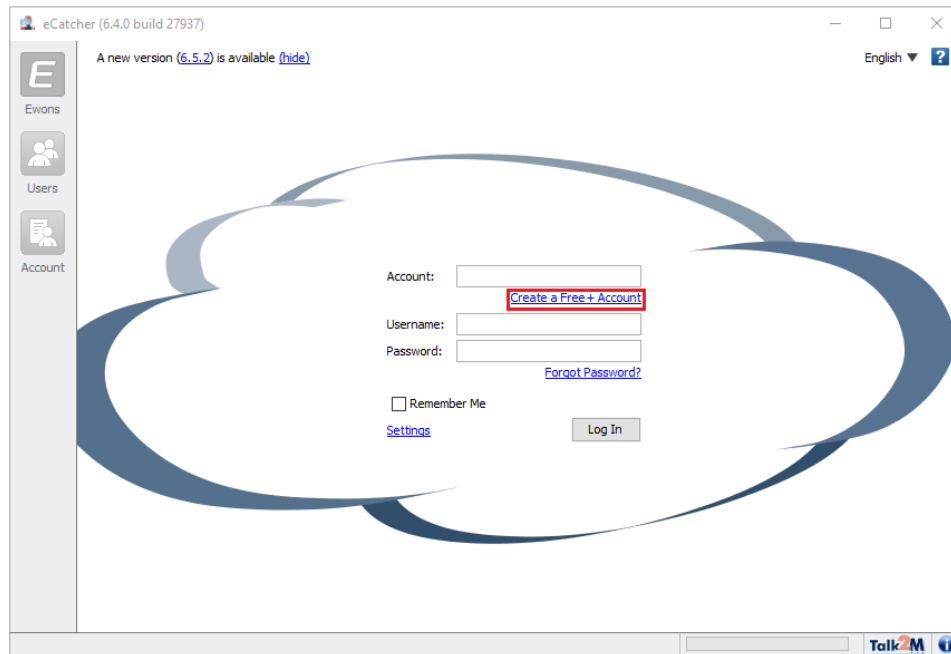
When moving onto the next step, leave **eBuddy** open (it can be minimized). Its **eZDHCP** function is required to remain connected if the Ewon’s IP address is outside the range of your network adapter.

The **eBuddy** application is usually used for direct connections to the Flexy. Once a Talk2M account has been associated with the Flexy, a secure internet connection can also be used.

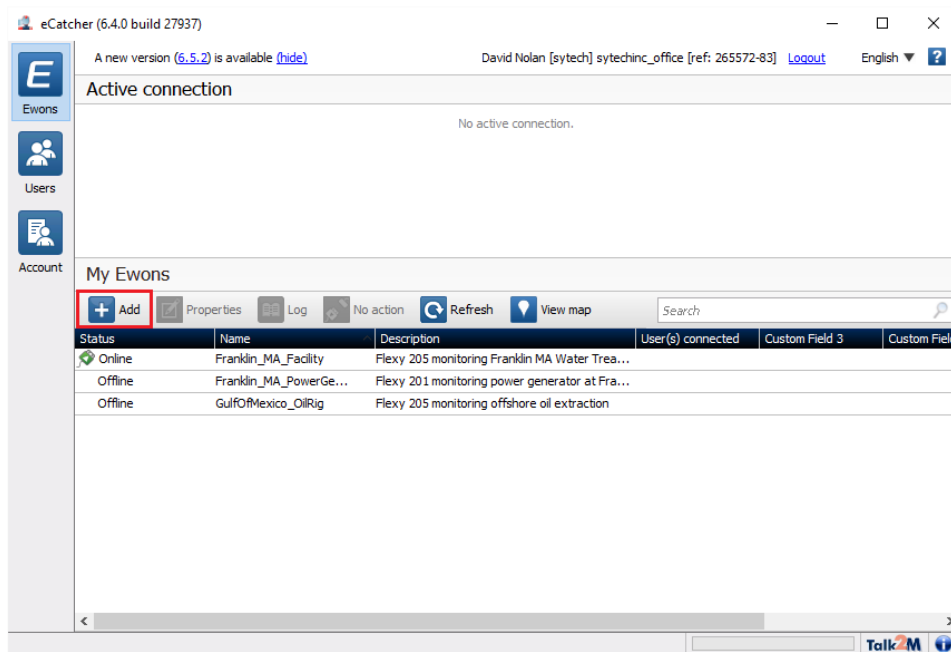
## Configure a Talk2M Account

For remote access, a Talk2M account needs to be created and associated with the Flexy. The account supports multiple flexy devices. When a Talk2M account is created, a DataMailbox is created automatically with it. This is done by **eCatcher**, a software application which is available from the HMS Networks web site.

Start **eCatcher** and select *Create a Free Account*.



After the account is created, log into **eCatcher**.



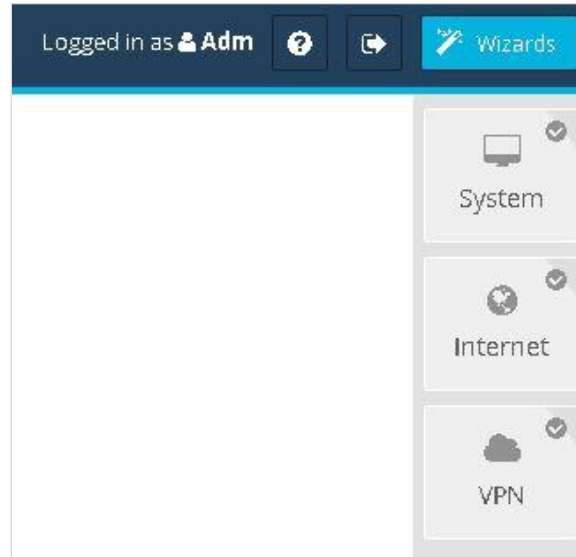
- Click **Add eWON**. Give the Ewon a **name** that will provide context to the data it will collect.
- Highlight the Ewon and select **Properties**. Then, select **Talk2M Connectivity**. Note the **Activation Key**, and the **name**.

## User Authentication

**eCatcher** allows two-factor authentication for configured users – however, this will make the account inaccessible to Talk2M data client applications, including **XLReporter**. Authentication should be set to single-factor authentication.

## Talk2M Connection

From the web Interface of the Flexy, log in using the default credentials *adm/adm*.



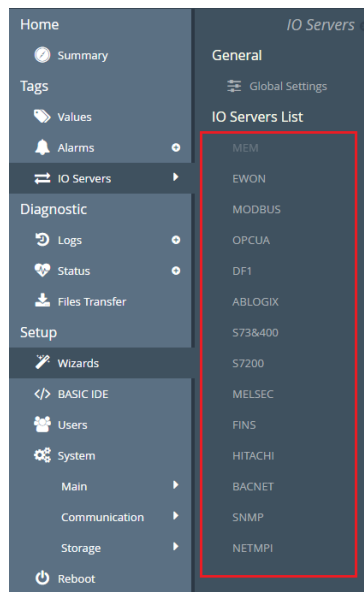
Open the **Wizards** page from the top-right of the window. Follow each wizard in order, starting with **System**.

Once the VPN connection is established, its status is displayed on the home page, as well as in the lower-right corner across configuration web site:



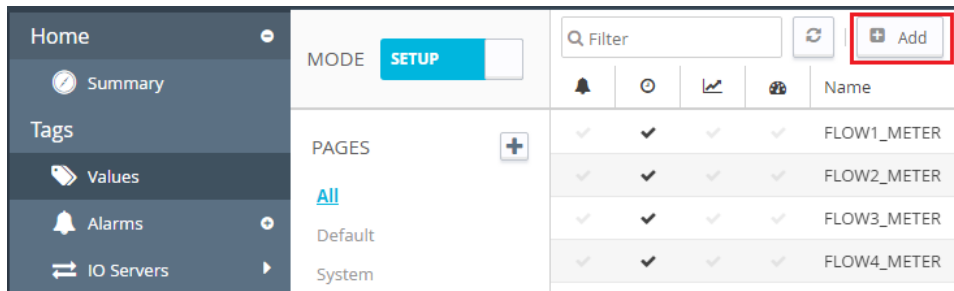
## Configure Process Data Connection

Data collection requires an **I/O Server** connection.



- Open **Tags**, **IO Servers** from the Flexy configuration web page.
- Enter **IP** and **poll rate** for the hardware being connected.

After an IO Server is defined, **Tags** can be defined, which map the value of an external data point in the server to an internal tag in the Flexy.



- Open the **Tags, Values** page.
- Set **Mode** to *Setup*, and click **Add**.

**I/O Server Setup**

Server Name: MEM      Topic Name: (empty)

Address: INITIAL\_CONFIG\_TAG

Type: Floating Point       Force Read Only

eWON value = IO Server Value \* 1 + 0

- Enter a **Tag Name**
- Set the **Server Name, Address** and data **Type**
- Repeat this process for all tags required for reporting.

## Create a Project

From the **XLReporter Project Explorer** select **File, New** to start the **Project Wizard**. This will give step-by-step instructions on creating a project

### Step 1 - Project

- Enter a **Project Name** and **Description** (optional).

**New Project**

Step 1 : Specify the Project Name and its Location.

Project Name: XLR\_Project  
 Project Off Line

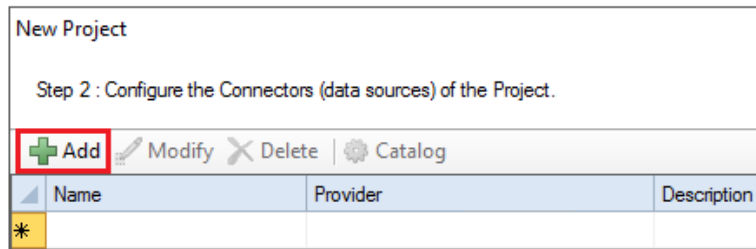
Description: Customer or Site name

Project Location: c:\XLRprojects

< Back    Next >    Finish    Cancel

## Step 2 - Connect

- Configure the data connector, click **Add**



New Project

Step 2 : Configure the Connectors (data sources) of the Project.

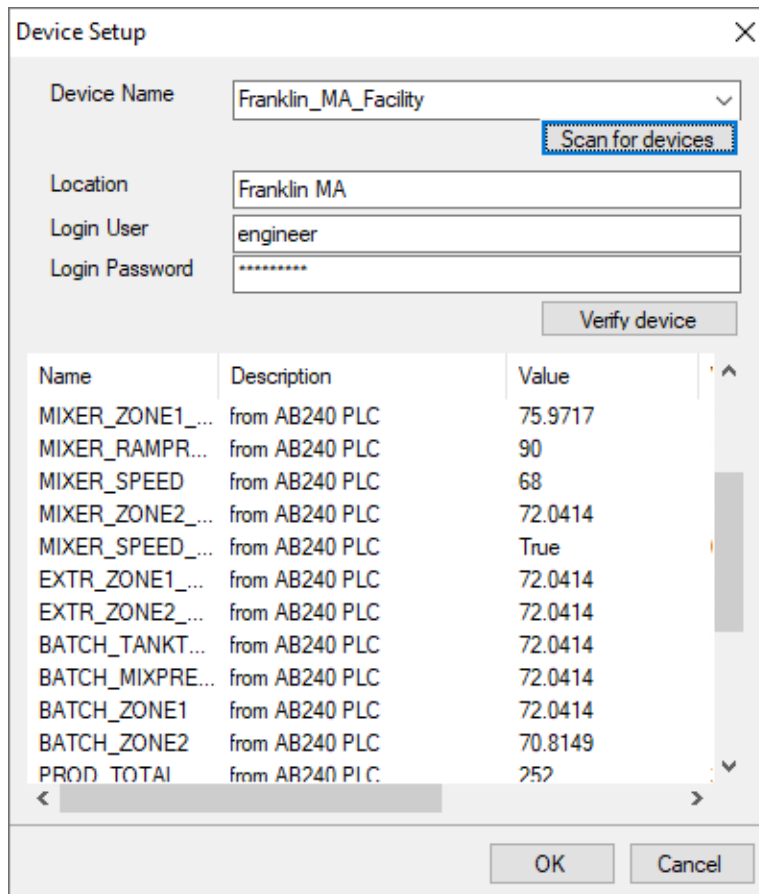
**Add** Modify Delete Catalog

Name	Provider	Description
*		

Select **HMS, Ewon M2Web Real-time values**.

Under the **Talk2M** tab, enter the **Account** credentials as configured in eCatcher.

Under the **Devices** tab, click **Add**.



Device Setup

Device Name: Franklin\_MA\_Facility

Location: Franklin MA

Login User: engineer

Login Password: \*\*\*\*\*

Scan for devices

Verify device

Name	Description	Value
MIXER_ZONE1_...	from AB240 PLC	75.9717
MIXER_RAMPR...	from AB240 PLC	90
MIXER_SPEED	from AB240 PLC	68
MIXER_ZONE2_...	from AB240 PLC	72.0414
MIXER_SPEED_...	from AB240 PLC	True
EXTR_ZONE1_...	from AB240 PLC	72.0414
EXTR_ZONE2_...	from AB240 PLC	72.0414
BATCH_TANKT...	from AB240 PLC	72.0414
BATCH_MIXPRE...	from AB240 PLC	72.0414
BATCH_ZONE1	from AB240 PLC	72.0414
BATCH_ZONE2	from AB240 PLC	70.8149
PROD_TOTAI	from AB240 PLC	252

OK Cancel

In **Device Setup**, click **Scan for Devices**.

- Enter the **Location**, and enter a **Login User/Password** combination accepted on the device.
- Click **Verify Device** to test the data connection.
- Click **OK**.