

Using XLReporter with GE Cimplicity History

Overview

XLReporter takes historical values from GE Cimplicity history to populate workbooks, periodically or on event, without needing Excel. The award winning reporting software turns raw data into industrial metrics which are used for compliance, regulatory, improvements and operations.

Complete reports are distributed automatically by email, FTP, file server and printers. With the Web Portal, reports are viewed or produced on-demand from any device supporting a web browser such as a mobile phone or tablet.

Configure Cimplicity

To set up data logging in Cimplicity, from the **CIMPLICITY Workbench**, double-click **Database Logger**.

To determine what database the historical data is logged to select **Edit, Logging Properties**.

Under the **Default Point Connection** tab, choose an existing **ODBC data source**. If there is not one there that fits your needs, you can create a new ODBC data source from **XLReporter's Project Explorer**, under the **Tools** tab by selecting **Database, DSN Settings**.

There are 2 methods of historical data logging, **Point Data** logging and **Group Point** logging. With **Point Data** logging every configured point is logged as a separate record. With **Group Point** logging every configured point is logged as a single record at the same time.

Cimplicity has provided a default table for both **Point Data** logging (**DATA_LOG**) and Group Point logging (**GROUP_LOG**). You can either add points to these tables or create your own by selecting **File, New Table**.

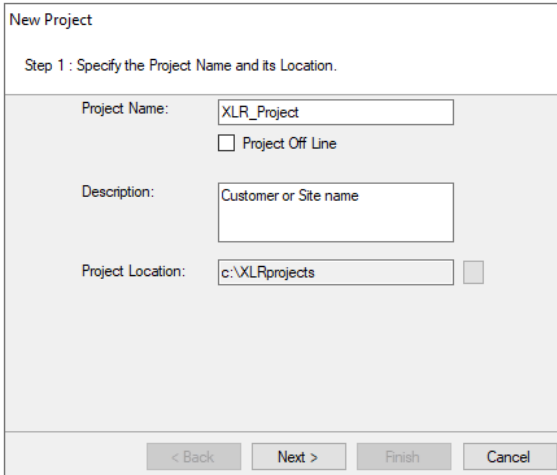
To add points to a table, right-click the table and select **Add Points**.

Create a Project

From the **XLReporter Project Explorer** select **File, New** to start the **Project Wizard**. This will give step-by-step instructions on creating a project

Step 1

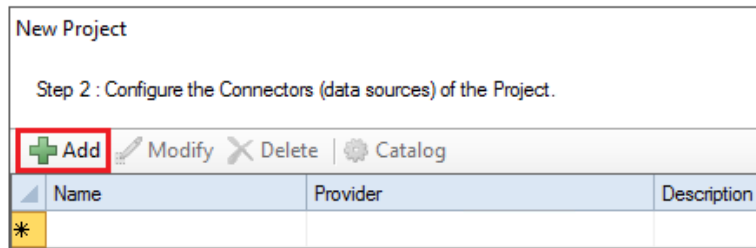
- Enter a **Project Name** and **Description** (optional).



The screenshot shows a dialog box titled "New Project" with the subtitle "Step 1 : Specify the Project Name and its Location." It contains three input fields: "Project Name" with the text "XLR_Project", "Description" with the text "Customer or Site name", and "Project Location" with the text "c:\XLRprojects". There is a checkbox labeled "Project Off Line" which is currently unchecked. At the bottom of the dialog, there are four buttons: "< Back", "Next >", "Finish", and "Cancel".

Step 2

- Configure the data connector, click **Add**



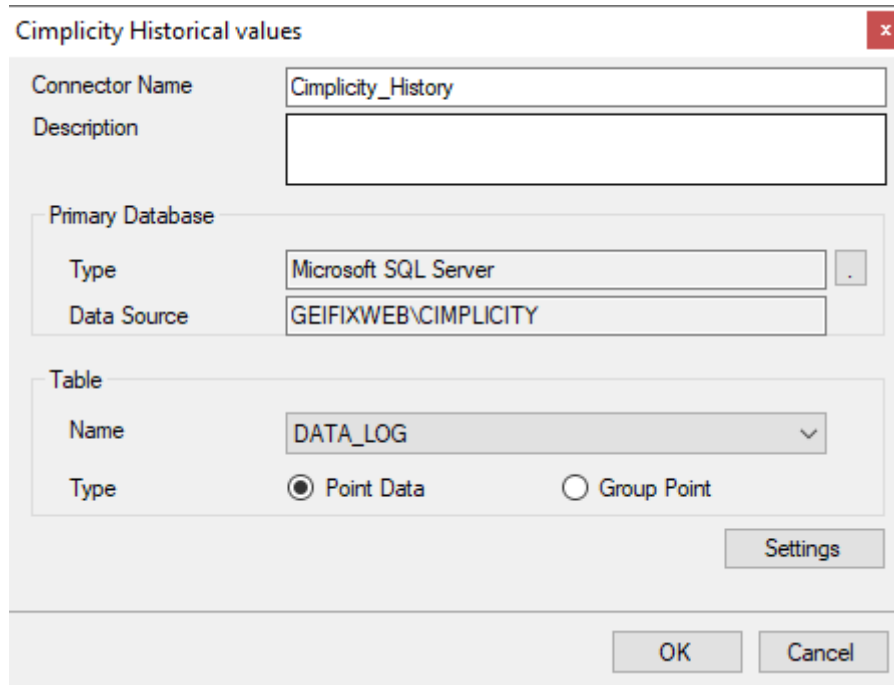
New Project

Step 2 : Configure the Connectors (data sources) of the Project.

+ Add | Modify | Delete | Catalog

Name	Provider	Description
*		

Select GE Digital, Cimplicity Historical values



Cimplicity Historical values

Connector Name: Cimplicity_History

Description:

Primary Database

Type: Microsoft SQL Server

Data Source: GEIFIXWEB\CIMPLICITY

Table

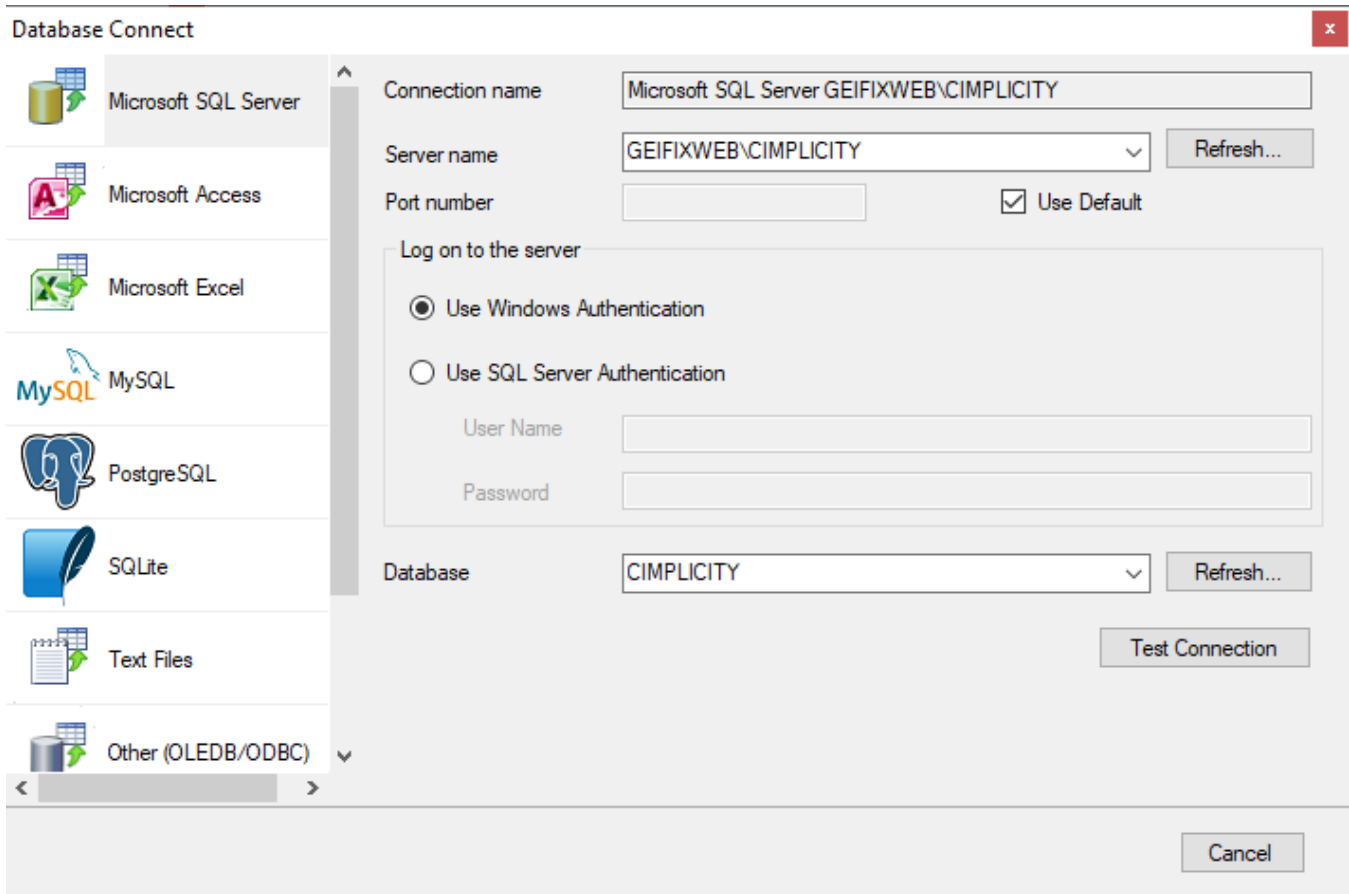
Name: DATA_LOG

Type: Point Data Group Point

Settings

OK Cancel

Under **Primary Database**, click the browse pushbutton ([...]) for **Type**.



- Set **Server name** to the name of the machine where Cimplicity is running.
- Specify the logon credentials if required.
- Select **CIMPLICITY** as the **Database**.
- Click **Test Connection** to verify the settings.

Verify the Data Connector

XLReporter retrieves data from the **Data Connector** using a **History Group**.

From the **XLReporter Project Explorer** select, **Tools, Connector Groups**

Select the *Cimplicity_History* connector and then select **Add**.

- Set the **Type Raw Values** and click **OK**.

On the **Columns** tab of the group, select the tag **Name(s)**.

Select **Preview**, pick a *Start* date and click **Refresh**.