

Using XLReporter with GE Digital – iFIX (OPC)

Overview

XLReporter takes process values directly from iFIX to a report without requiring a historian or database. This is accomplished by “report-as-you-run” technology that automatically populates a workbook, periodically or on event, without needing Excel. Completed reports are produced in workbook, PDF and web formats.

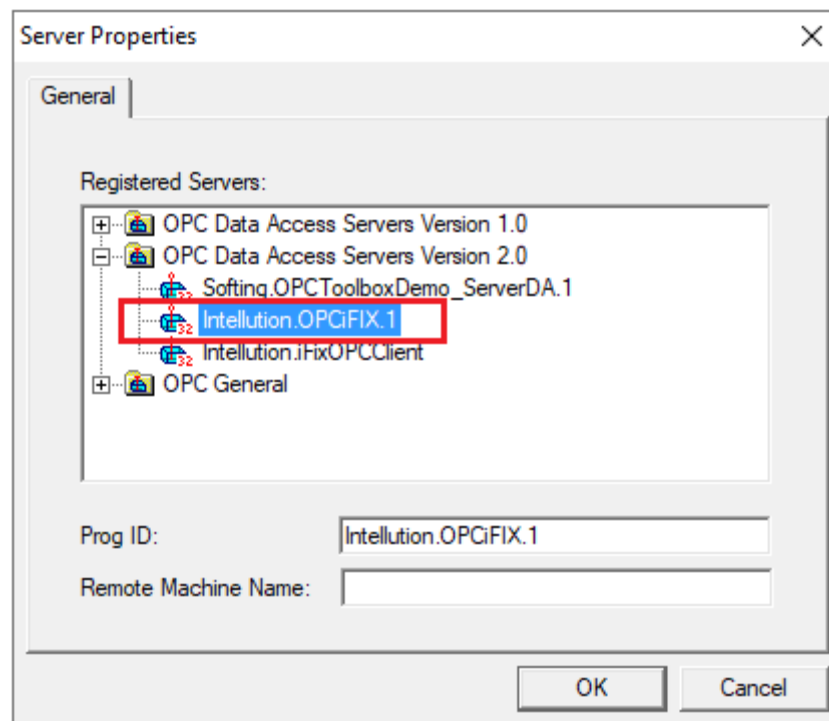
Prerequisites

Verify Communication

Communication between the OPC server and an OPC client must be verified. If an OPC client is not provided with the server, **XLReporter** provides an independent OPC client to verify connectivity and data retrieval from any OPC DA server. This client is found on **XLReporter’s** product CD under **Tools, OPC, OPC_DA**. It can also be downloaded from www.SyTech.com.

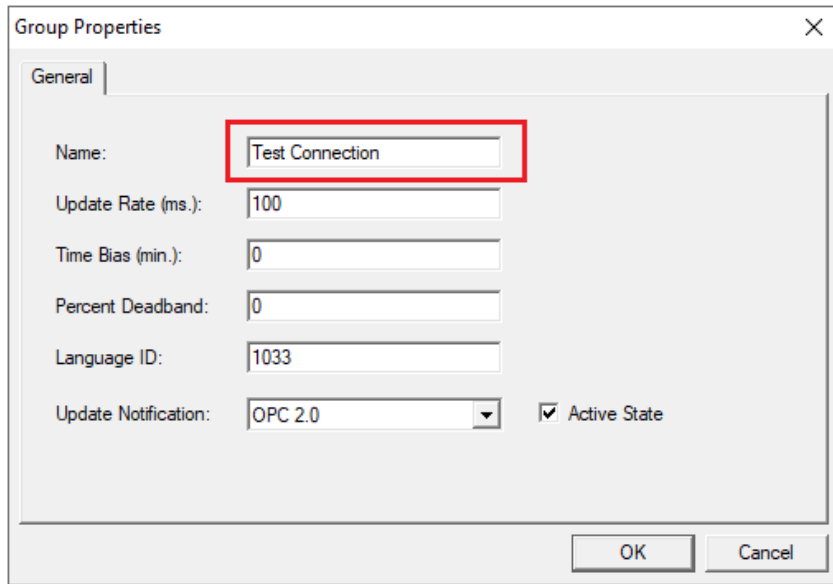
To run, double-click **SampleClientDA.exe**.

To connect to an OPC server, select **Edit, New Server Connection** to open the **Server Properties** window.



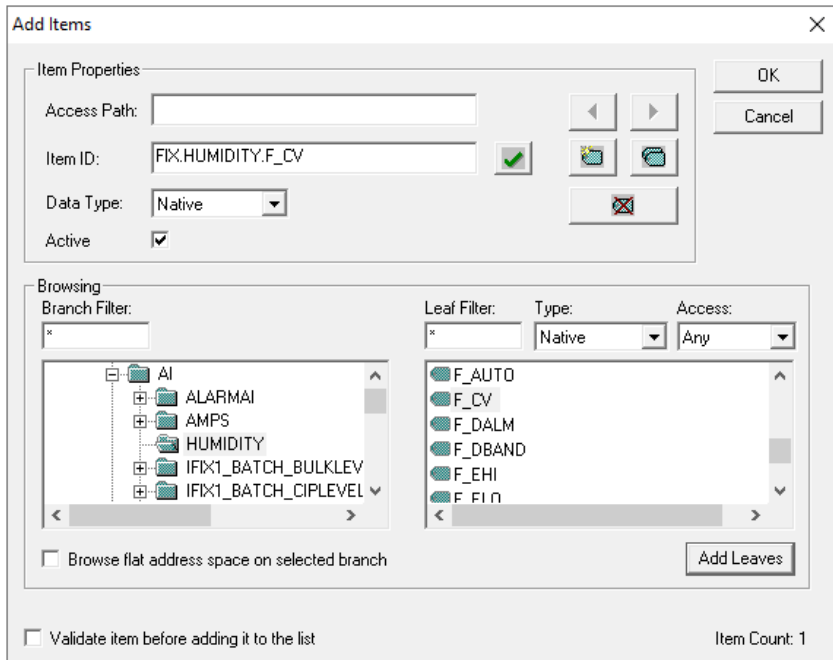
Expand the **OPC Data Access Servers Version 2.0**, select *Intellution.OPCiFIX.1* and click **OK**.

From the **Edit** menu select **New Group**.

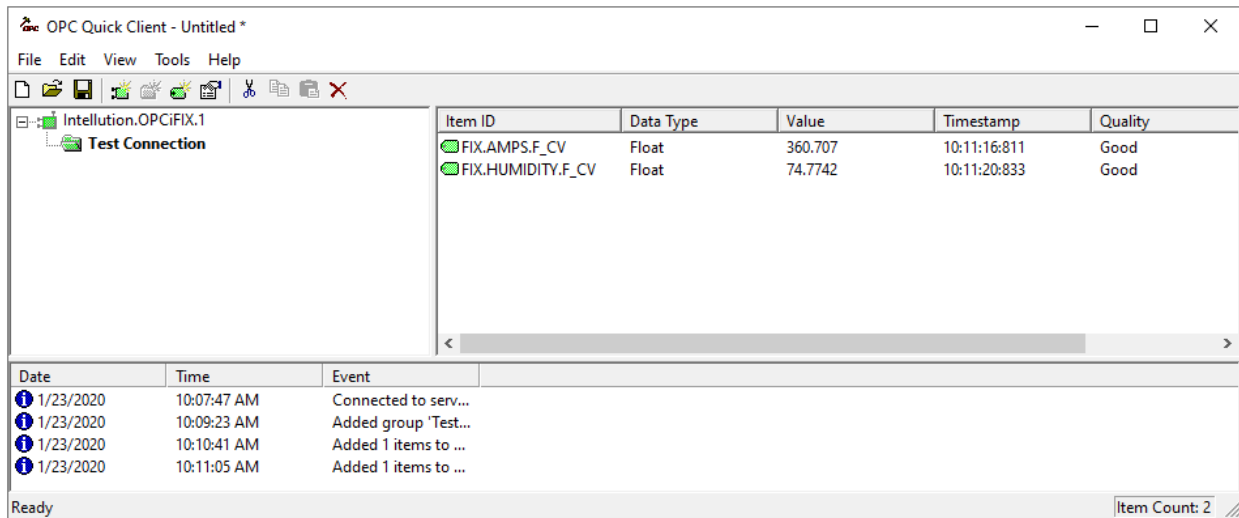


Specify **Name** and click **OK**.

Click on the group name created, and select **Edit, New Item**.



This opens the **Add Items** window. In the browsing section, drill into the tree and select **Leaf** items on the right. To select a leaf, highlight and click the **Add Leaves** button. Click **OK** when selection is complete.



All of the selected tags appear along with their real time values, type, quality, and timestamp.

If at any point you experience an issue with this client, contact GE Digital technical support to troubleshoot and correct these issues.

Create a Project

From the **XLReporter Project Explorer** select **File, New** to start the **Project Wizard**. This will give step-by-step instructions on creating a project

Step 1

- Enter a **Project Name** and **Description** (optional).

Step 2

- Configure the data connector, click **Add**

Name	Provider	Description
*		

Select **GE Digital, iFIX Real-time values (OPC)**

The connector requires a **Primary Server** which, by default has **Node** set to *local*.

Remote Communication to iFIX OPC

If iFIX is installed on a workstation remote from the PLC then set the **Node** to an item in the dropdown list or enter an *IP address*.

The workstation must also have the OPC core components installed. To determine if the core components are installed verify the following file exists:

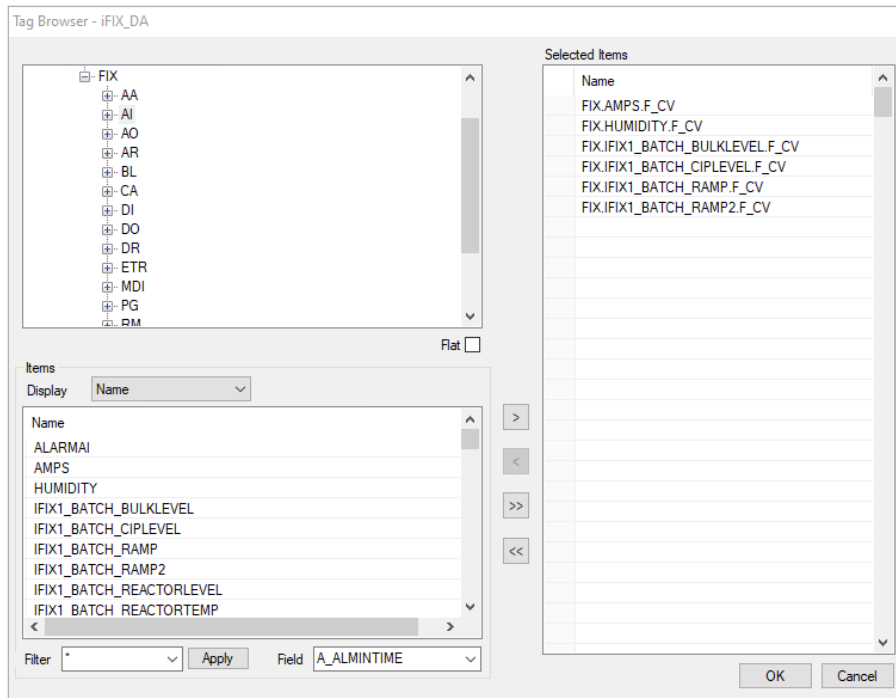
- 64 - bit OS C:\Windows\SysWow64\OPCEnum.exe
- 32 - bit OS C:\Windows\system32\OPCEnum.exe

If the components are not installed then they are provided in the tools folder of the installation or from www.opcfoundation.org.

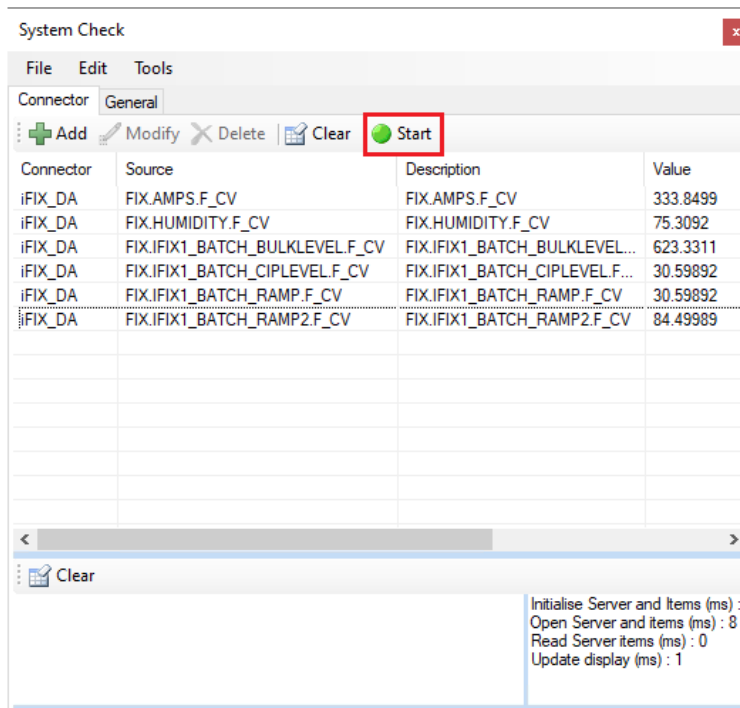
Verify Data Communication

To verify communication, open the **Project Explorer** and select the **Tools** tab. Launch the **System Check** application.

- Click **Add**
- Choose the *iFIX Real-time values (OPC)* connector from the dropdown list.
- Click the pushbutton ([...]) next to **Items** to open the Tag Browser window.



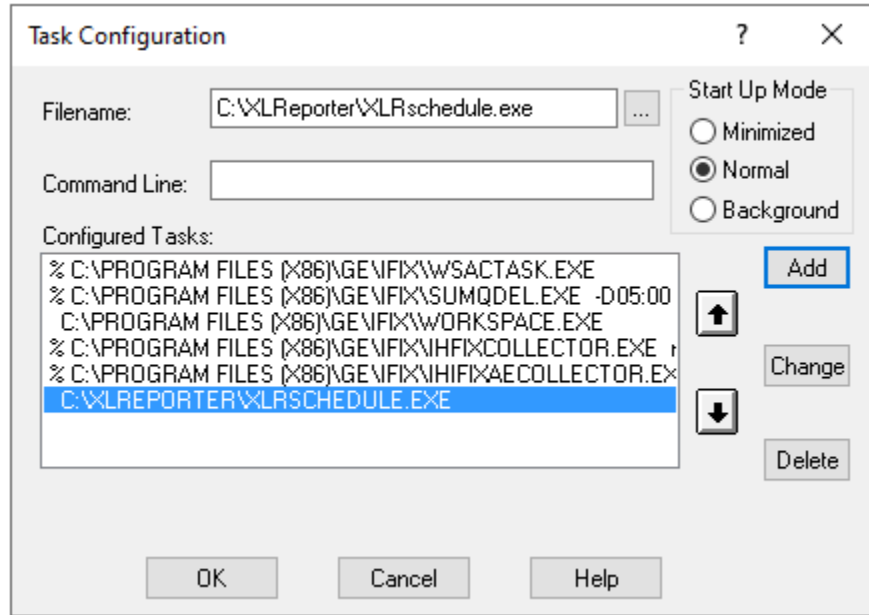
- Select one or more tags, click **OK**



- Click **Start** to verify the communication

Start the Scheduler from iFIX

Open the **System Configuration (SCU)** from the **iFIX** program group. Select **Configure, Tasks**.



- For **Filename** browse and select **XLRschedule.exe** from the **XLReporter** installation folder (*C:\XLReporter* by default).
- Set **Start Up Mode** to *Normal*.
- Click **Add**.
- Use the down arrow to move this to the bottom of the **Configured Tasks** list.
- Click **OK**.

Save and close the SCU. The next time iFIX is started, **XLReporter's Scheduler** will start with it.