

## Convert XLReporter from InTouch local to OI Gateway OPC

### Overview

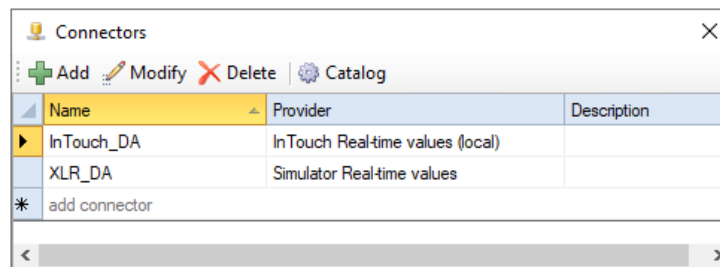
An existing XLReporter project that reports from data in InTouch through the local interface can be easily converted to report from OPC. OPC is a standard and can also run from remote PC's.

#### Steps to convert:

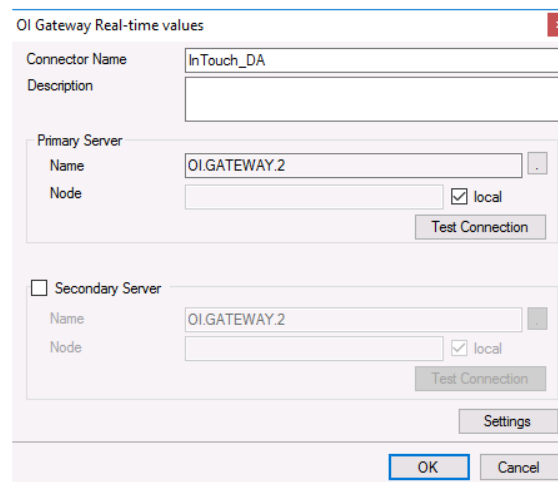
- Delete old connector to InTouch local
- Create new connector with the same name to OI Gateway OPC
- Update Real Time Data Groups
- Update Real time single tag connections
- Update Data Export connections
- Update Analytic tags
- Update Schedule event commands

### Change the Connector

From the **XLReporter Project Explorer** select the **Data** tab and then **Connectors**.



- Highlight the connector to the InTouch and note the name. In the above example this is *InTouch\_DA*
- **Delete** the connector
- Click **Add**
- Select **AVEVA, OI Gateway Real-time values**



- Enter connector name as the previous connector name (*InTouch\_DA*)

The connector requires a **Primary Server** which, by default has **Node** set to *local*.

## Remote Communication to AVEVA OI Gateway

If AVEVA InTouch OI Gateway is installed on a workstation remote from the PLC then uncheck *local* and set the **Node** the *Machine Name* or *IP address* where the server is running.

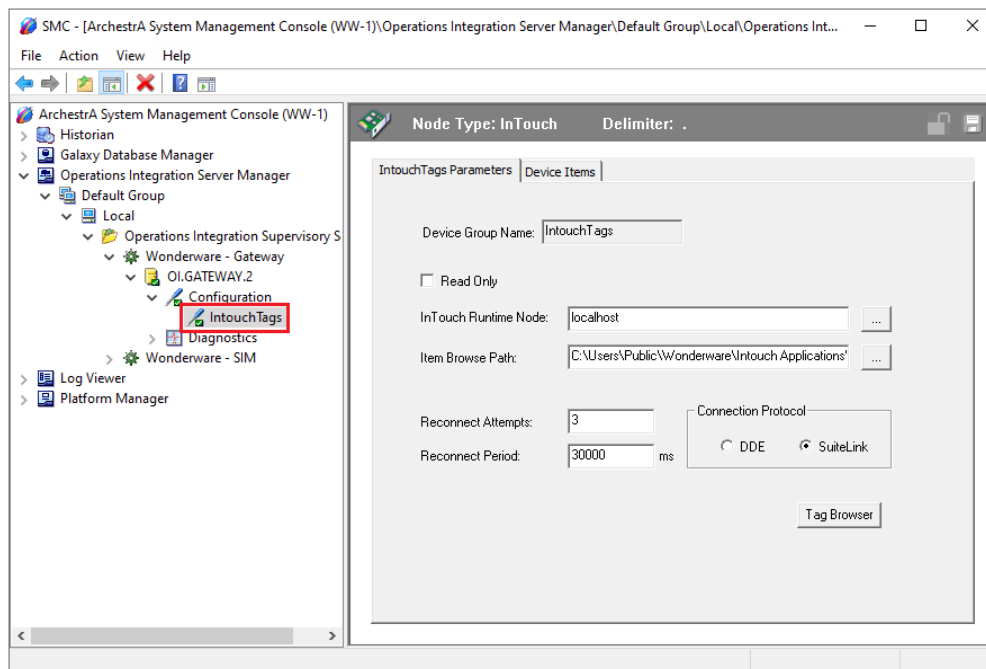
The workstation must also have the OPC core components installed. To determine if the core components are installed verify the following file exists:

- 64 - bit OS C:\Windows\SysWow64\OPCEnum.exe
- 32 - bit OS C:\Windows\system32\OPCEnum.exe

If the components are not installed then they are provided in the tools folder of the installation or from [www.opcfoundation.org](http://www.opcfoundation.org).

## Find Device Group Name

From the AVEVA program group, select **System Platform Management Console**.

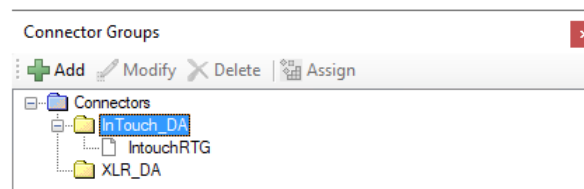


Expand **Operations Integration Server Manager, Default Group, Local, Operations Integration Supervisory Servers, Wonderware – Gateway, OI.GATEWAY.2, Configuration**

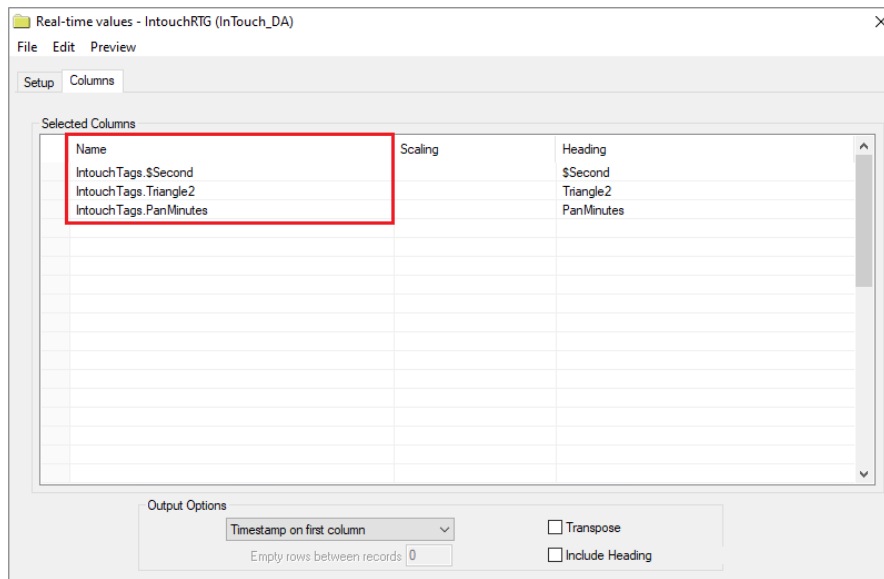
- Note the **Device Group Name** for the InTouch system. In the example it is *IntouchTags*
- Tag names change from *TagName* to *DeviceGroupName.TagName* in the XLReporter project

## Update Data Groups

From the **XLReporter Project Explorer** select the **Data** tab and then **Connectors**.



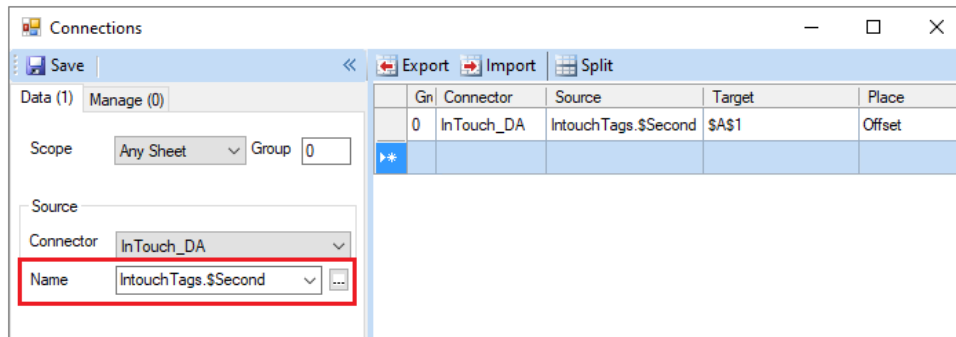
- Open each real time data group and in front of each tag name add the *Device Group Name*



- Select **Preview** to test each real time data group

## Update Single Tag Connections

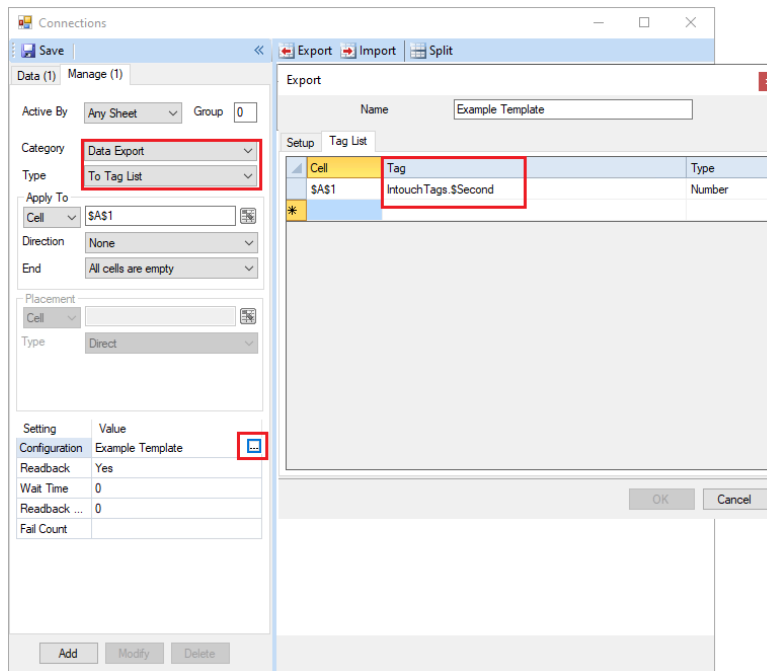
From the **XLReporter Project Explorer** open the template and from the **XLReporter** menu select **Connect**



- In front of each tag name add the *Device Group Name*. If multiple connections need to be updated use the **Export** and **Import** options.

## Update Data Export Connections

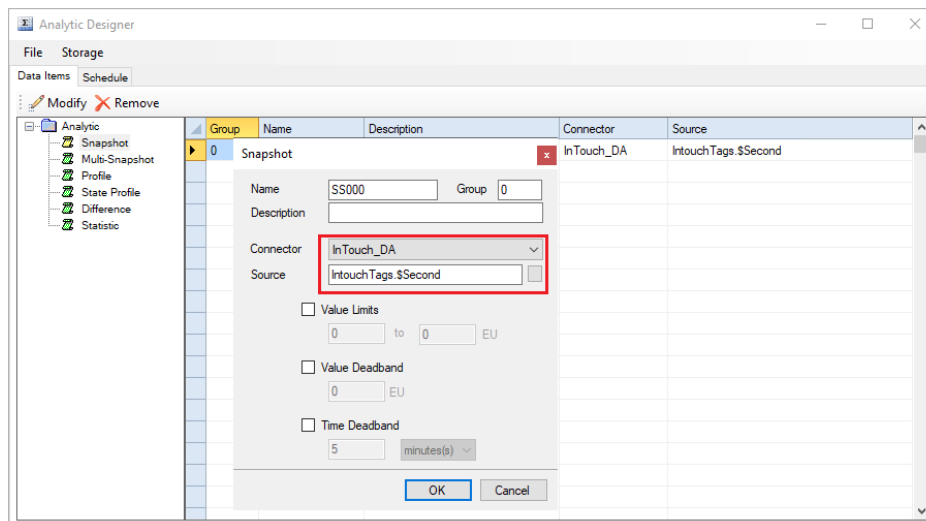
From the **XLReporter Project Explorer** open the template and from the **XLReporter** menu select **Connect** and select the **Manage** tab



- If there are any **Data Export, To Tag List** management connections configured, modify each one. In the configuration, in front of each tag name in the **Tag** column, add the *Device Group Name*.

## Update Analytics

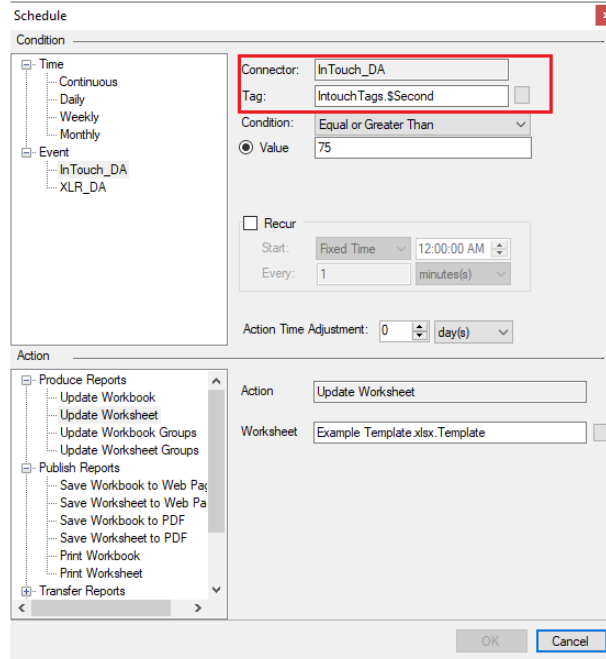
From the **XLReporter Project Explorer** select the **Data** tab and then **Analytics**.



- For each analytic category on the left, in front of each tag name add the *Device Group Name*.

# Update Schedule Event Triggers

From the **XLReporter Project Explorer** select the **Project** tab and then **Designer**.



- For each schedule line set to trigger on an event, modify the schedule line. In front of each tag name add the *Device Group Name*.