

Convert XLReporter from GE iFIX native to iFIX OPC

Overview

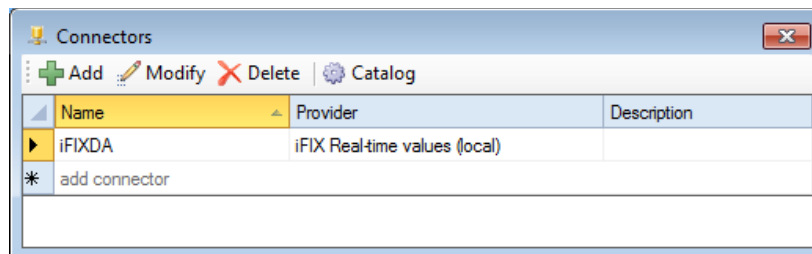
An existing XLReporter project that reports from data in GE iFIX through the local interface can be easily converted to report from OPC. OPC is a standard and can also run from remote PC's.

Steps to convert:

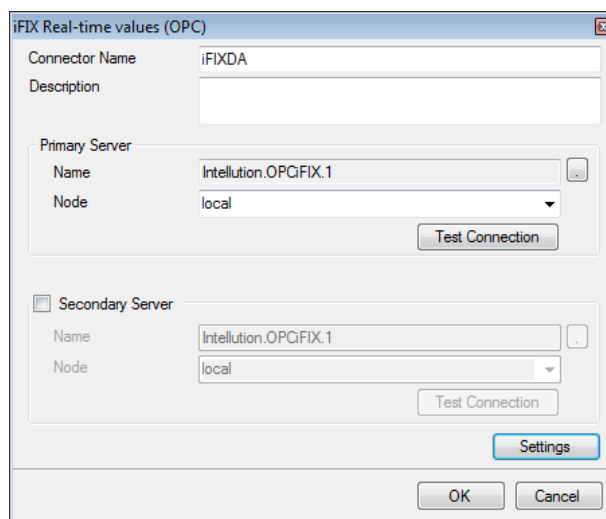
- Delete old connector to iFIX local
- Create new connector with the same name to iFIX OPC
- Update Real Time Data Groups
- Update Real time single tag connections
- Update Data Export connections
- Update Analytic tags
- Update Schedule event commands

Change the Connector

From the **XLReporter Project Explorer** select the **Data** tab and then **Connectors**.



- Highlight the connector to the iFIX and note the name. In the above example this is *iFIXDA*
- **Delete** the connector
- Click **Add**
- Select **GE Digital, iFIX Real-time values (OPC)**



- Enter connector name as the previous connector name (*iFIXDA*)

The connector requires a **Primary Server** which, by default has **Node** set to *local*.

Remote Communication to iFIX OPC

If iFIX is installed on a workstation remote from the PLC then set the **Node** to an item in the dropdown list or enter an *IP address*.

The workstation must also have the OPC core components installed. To determine if the core components are installed verify the following file exists:

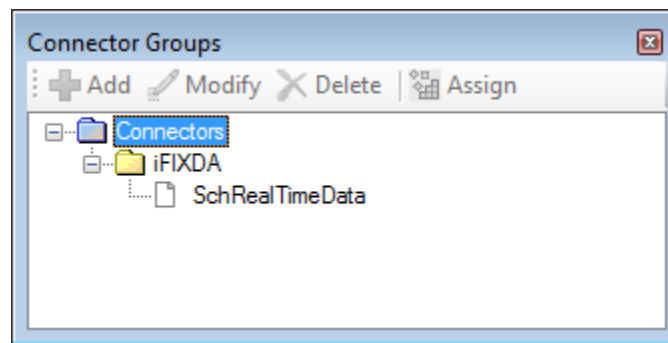
- 64 - bit OS C:\Windows\SysWow64\OPCEnum.exe
- 32 - bit OS C:\Windows\system32\OPCEnum.exe

If the components are not installed then they are provided in the tools folder of the installation or from www.opcfoundation.org.

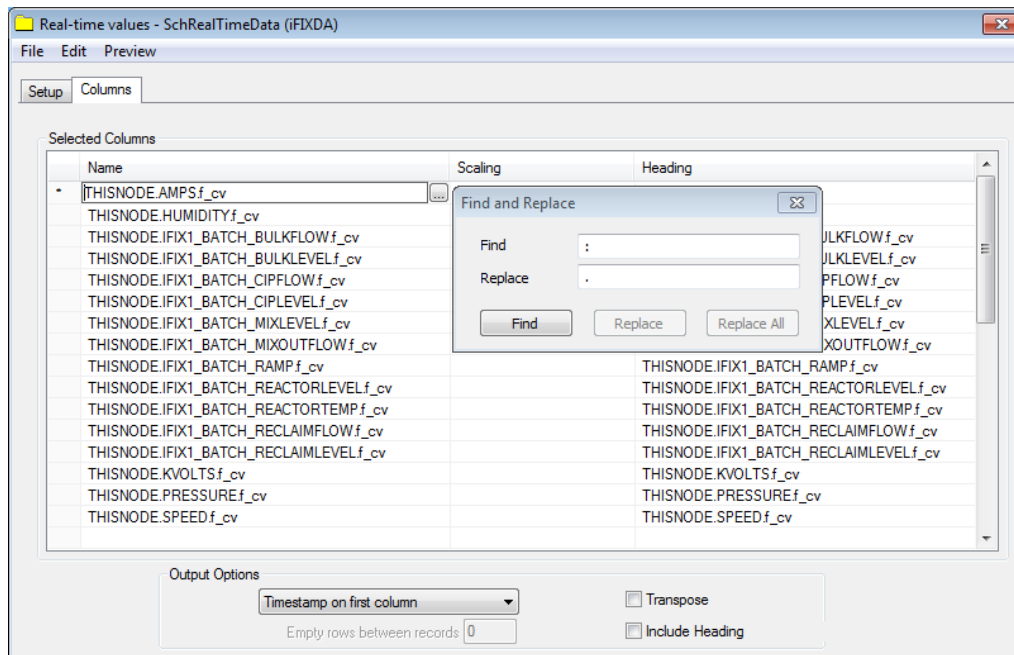
Update data groups

In most cases when a bulk import of tags are converted from GE iFIX Local to iFIX OPC the tag names change from *Node:Tag.F_CV* to *Node.Tag.F_CV*, in other words the *colon* after the *Node* changes to a *period*.

From the **XLReporter Project Explorer** select the **Data** tab and then **Connectors**.



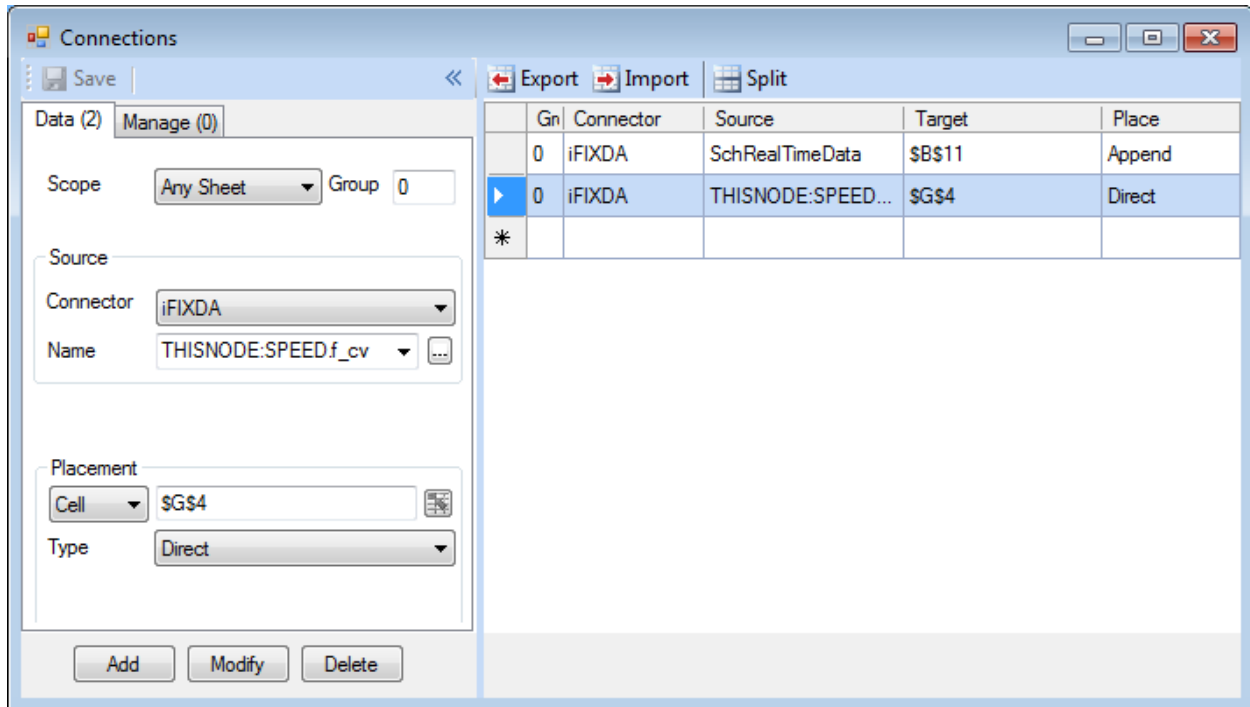
- Open each real time data group and select **Edit, Find and Replace**
- For **Find** enter :
- For **Replace** enter .
- Click **Replace All**



- Select **Preview** to test each real time data group

Update single tag connections

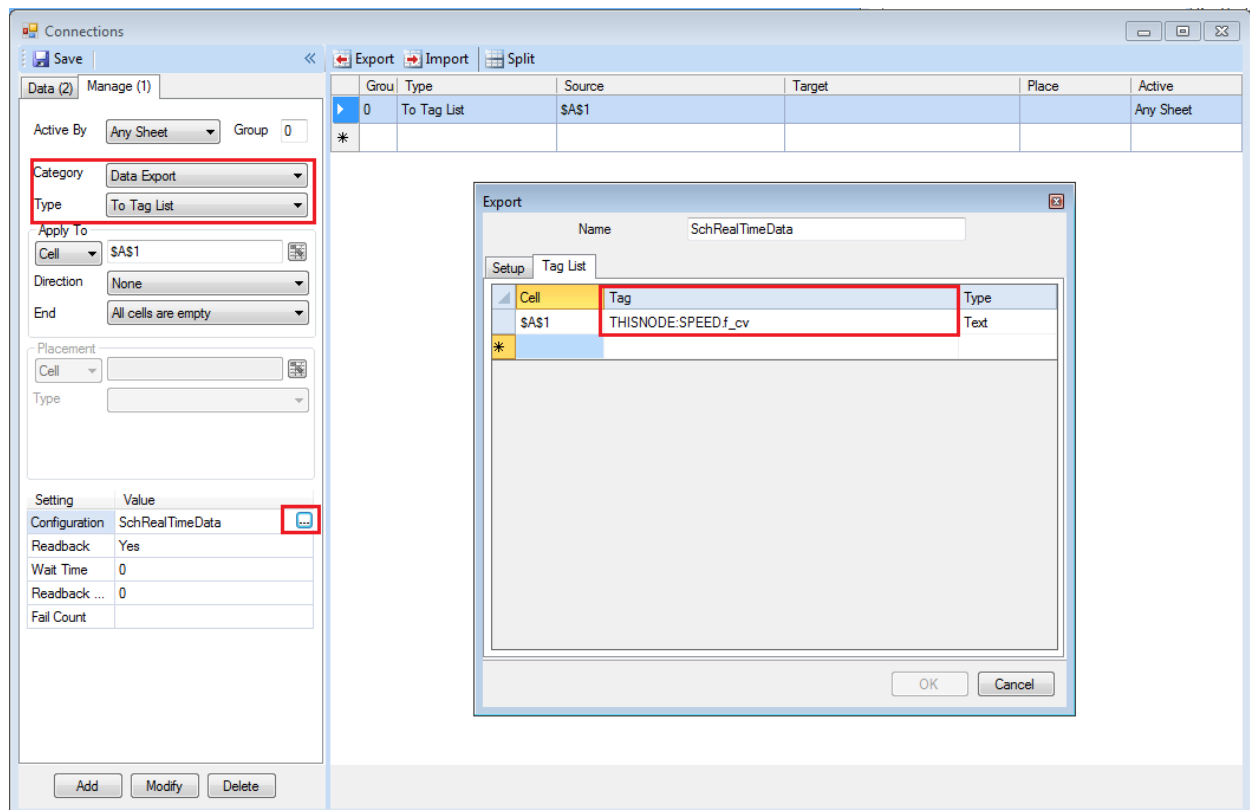
From the **XLReporter Project Explorer** open the template and from the **XLReporter** menu select **Connect**



- Change the *colon* after the *Node* to a *period*. If a multiple connections need to be updated use the **Export-Import** options.

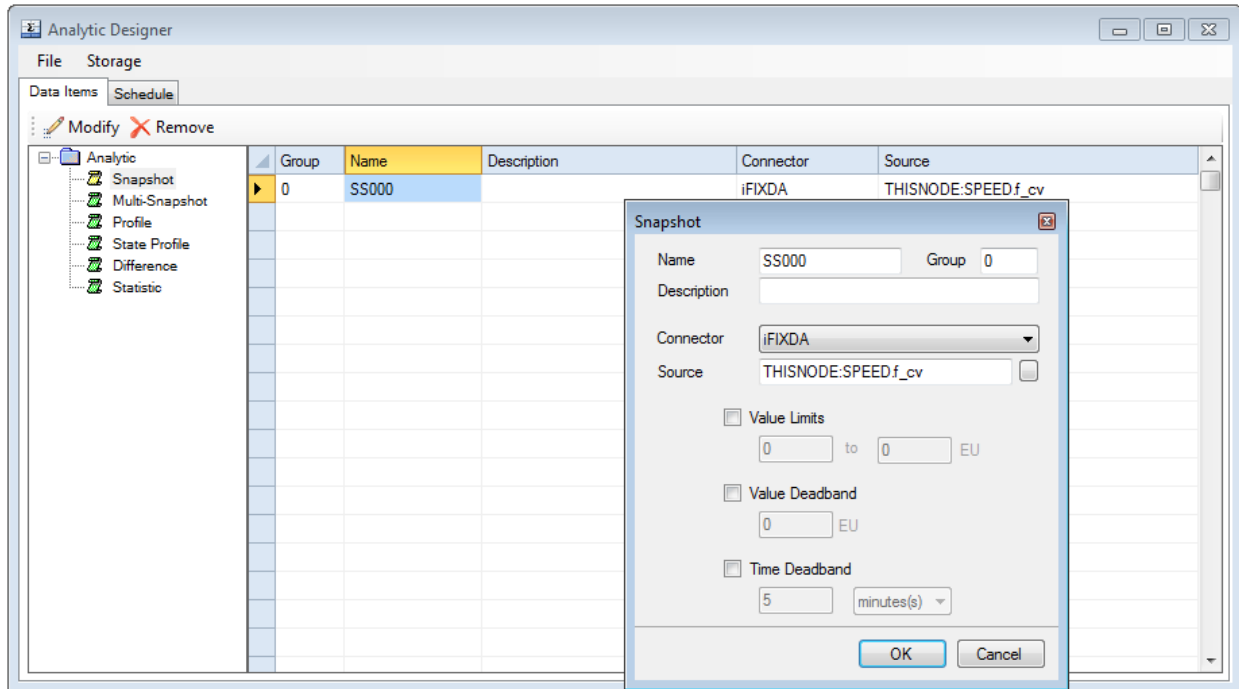
Update data export connections

From the **XLReporter Project Explorer** open the template and from the **XLReporter** menu select **Connect** and select the **Manage** tab



Update analytics

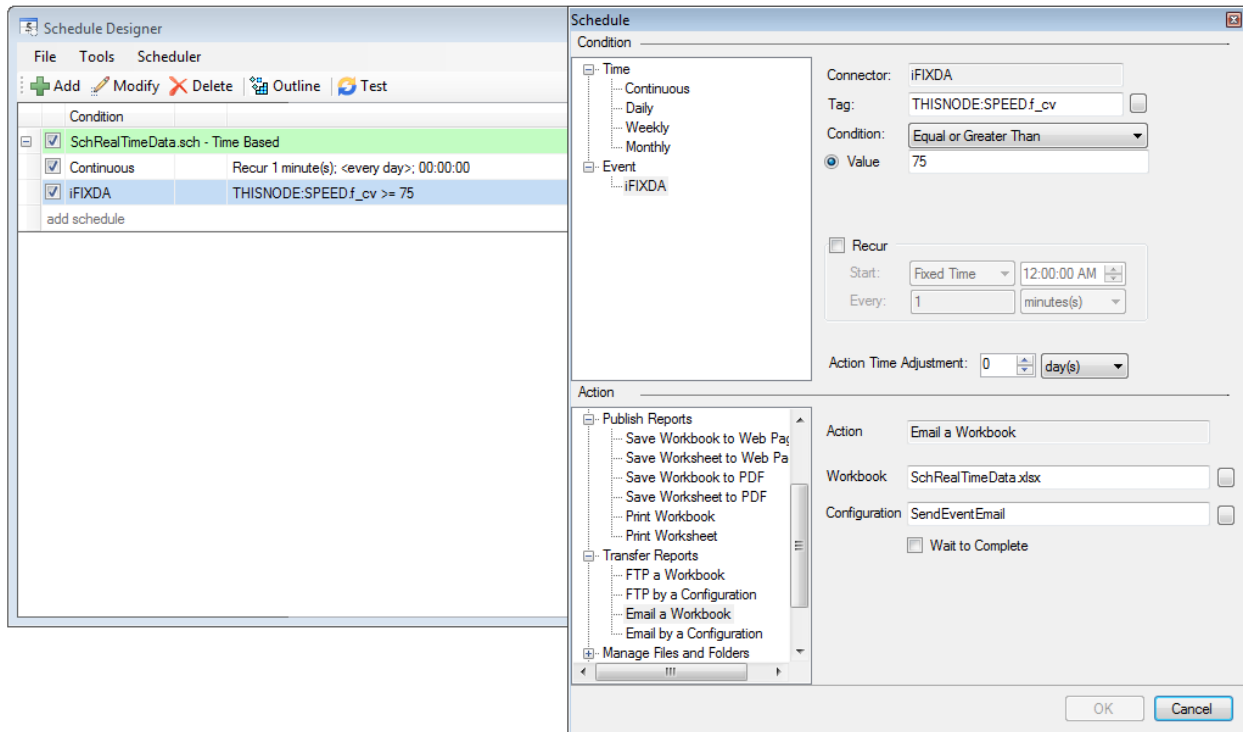
From the **XLReporter Project Explorer** select the **Data** tab and then **Analytics**.



- Change the *colon* after the *Node* to a *period* in each analytic and schedule event.

Update schedule events

From the **XLReporter Project Explorer** select the **Project** tab and then **Designer**.



- Change the *colon* after the *Node* to a *period* in each event type command.