

## Convert XLReporter from GE iFIX Classic to GE Historian

### Overview

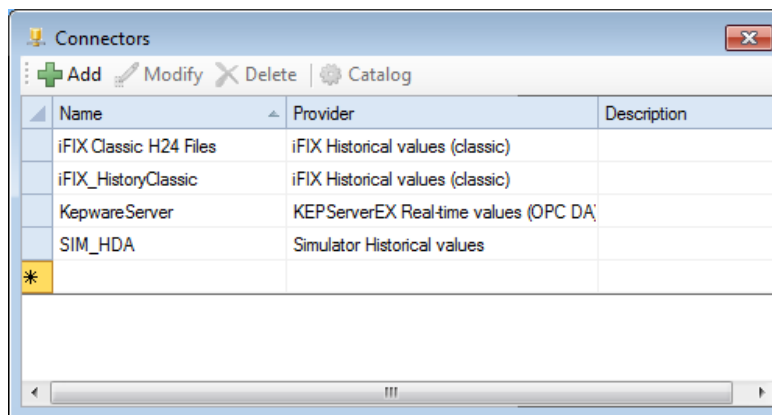
An existing XLReporter project that reports from data collected into the GE iFIX history (h24 files) can be easily converted to report from the GE Historian.

#### Steps to convert:

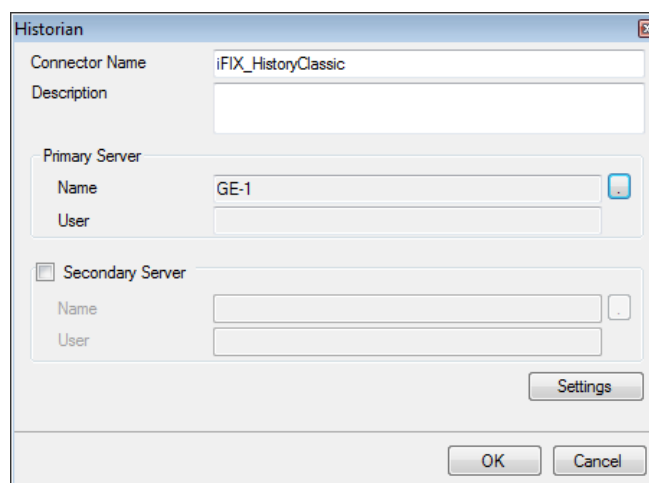
- Delete old connector to iFIX Classic.
- Create new connector with the same name to Proficy Historian.
- Open each History Data Group and replace the “:” with a “.” (Optional if needed).
- Preview each History Data Group to validate the tag names.

### Change the Connector

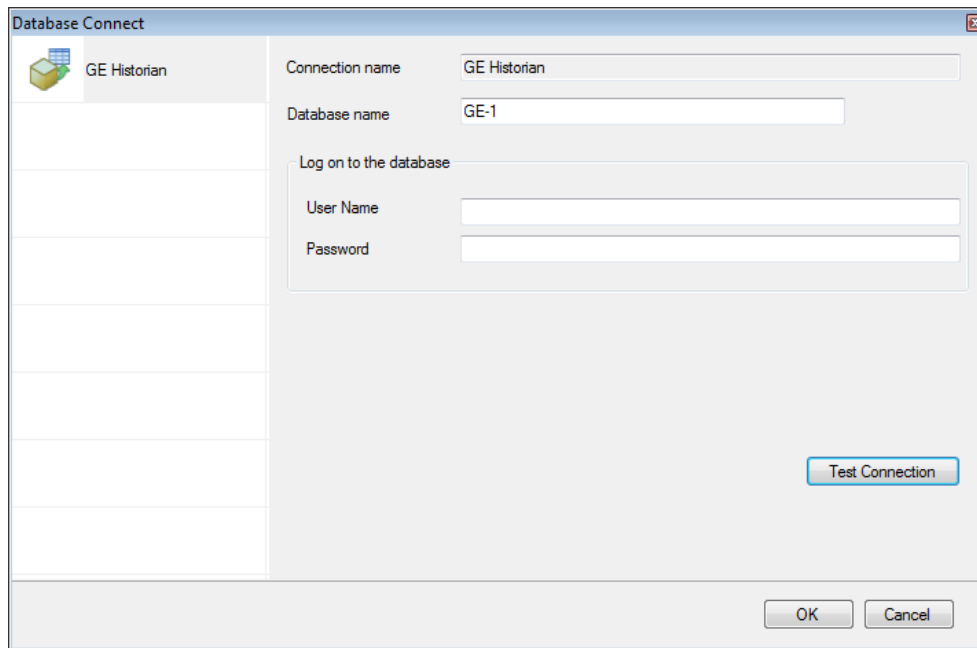
From the **XLReporter Project Explorer** select the **Data** tab and then **Connectors**.



- Highlight the connector to the iFIX and note the name. In the above example this is *iFIX\_HistoryClassic*.
- **Delete** the connector
- Click **Add**
- Select **GE Digital, Historian** or **Historian Plus**.



- Enter connector name as the previous connector name (*iFIX\_HistoryClassic*)
- Under **Primary Server**, click the browse pushbutton ([...]) for **Name**.

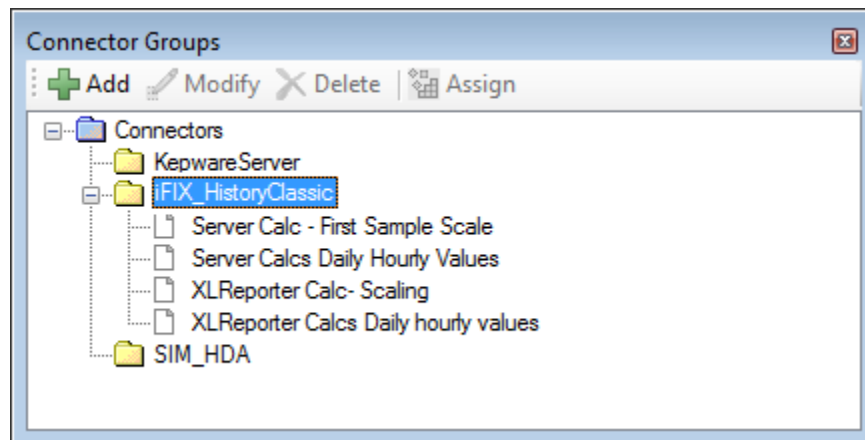


- Set **Database name** to the name of the machine where the Historian is running. This setting can also be left blank to use the default server as configured in the **Historian Interactive SQL** application.
- Specify the **Log on to the Database** credentials if required.
- Click **Test Connection** to verify the settings.
- Close **Connectors**

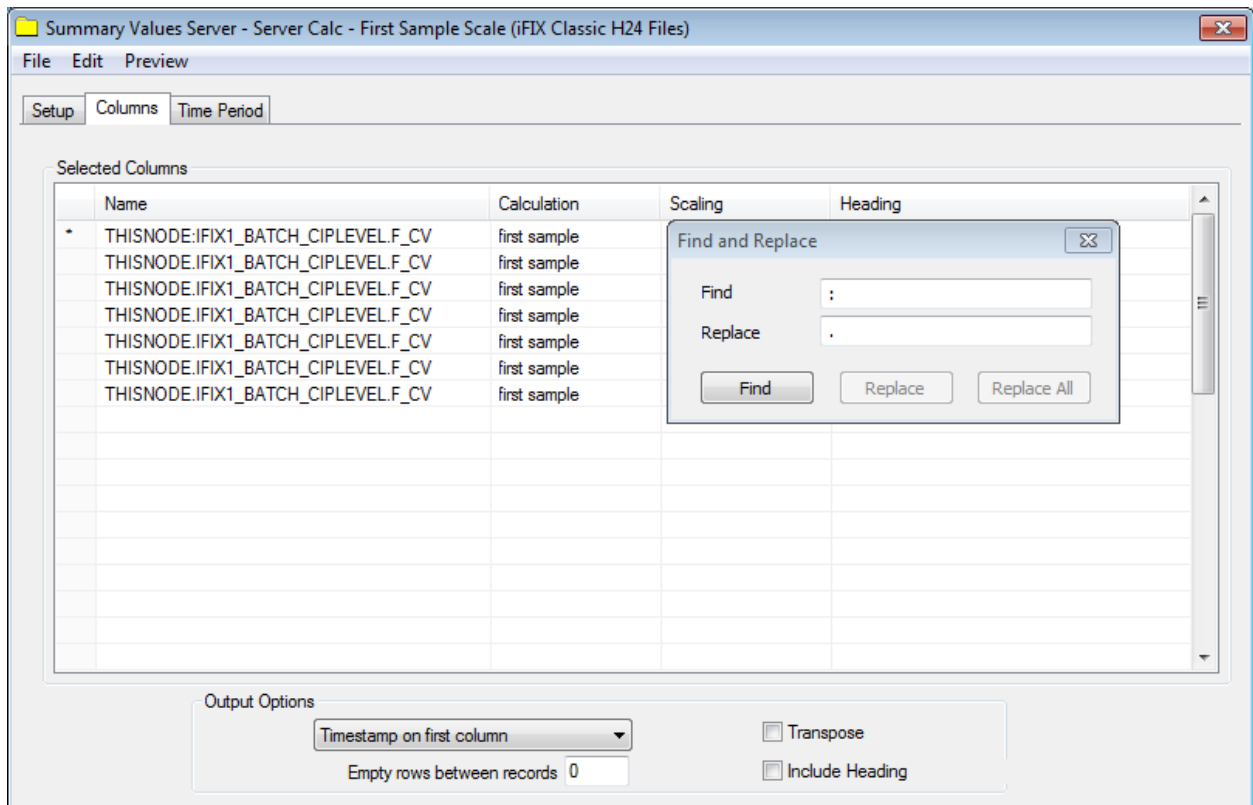
## Modify data Groups

In most cases when a bulk import of tags are converted from GE iFIX Classic to Proficy Historian the tag names change from *Node:Tag.F\_CV* to *Node.Tag.F\_CV*, in other words the *colon* after the *Node* changes to a *period*.

From the **XLReporter Project Explorer** select the **Data** tab and then **Connectors**.



- Open each history data group and select **Edit, Find and Replace**
- For **Find** enter :
- For **Replace** enter .
- Click **Replace All**



- Select **Preview** to test each history data group