

Integrate XLReporter Into FactoryTalk View SE

Overview

FactoryTalk® View Site Edition (SE) is a supervisory-level HMI software for monitoring and controlling distributed-server/multi-user applications. With XLReporter integrated into this solution, the user experience is expanded to viewing and producing reports on-demand.

XLReporter provides both Windows based and Web based integration.

Prerequisites

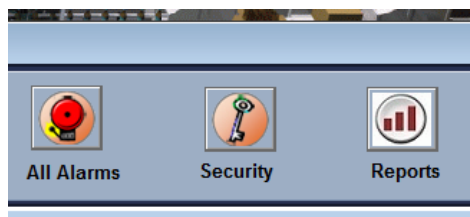
To use XLReporter's web client:

- The distributed version of XLReporter must be installed and configured.
- The XLReporter server must be accessible from the FactoryTalk Viewpoint clients. This would be the case if XLReporter is installed on the same machine as FactoryTalk View SE.

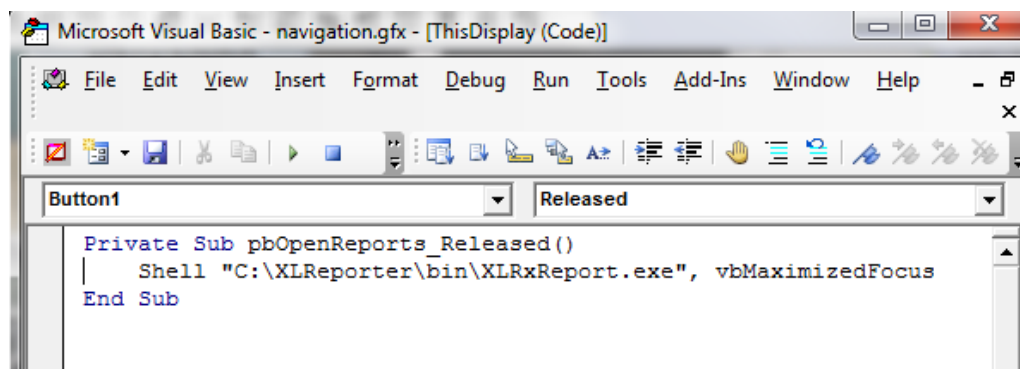
Windows Integration

On a FT View SE display, add a pushbutton(s) that will let the user

- View reports that are created automatically by the XLReporter scheduler
- Produce reports on-demand by specifying custom settings.



The script behind the button is similar to the following.

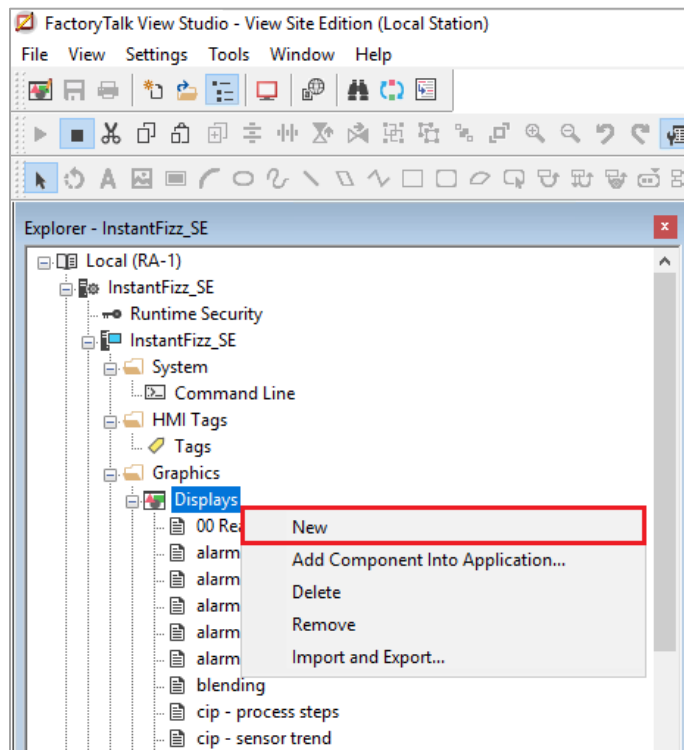
A screenshot of the Microsoft Visual Basic code editor window. The title bar reads 'Microsoft Visual Basic - navigation.gfx - [ThisDisplay (Code)]'. The menu bar includes File, Edit, View, Insert, Format, Debug, Run, Tools, Add-Ins, Window, and Help. The toolbar contains various icons for editing and running code. Below the toolbar, there is a dropdown menu for 'Button1' and a dropdown for 'Released'. The code area contains the following script:

```
Private Sub pbOpenReports_Released()  
    Shell "C:\XLReporter\bin\XLRxReport.exe", vbMaximizedFocus  
End Sub
```

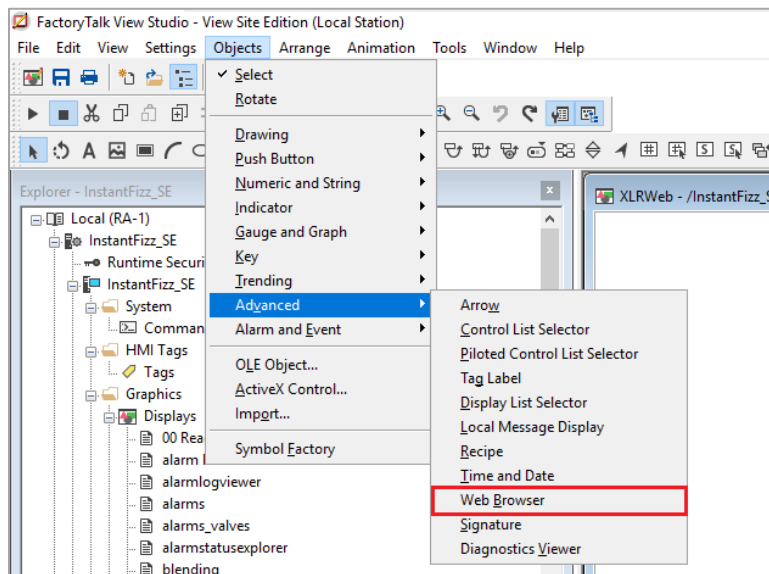
Note that to keep XLReporter on top of the FT Display, use the “on top” feature in XLReporter. See the **Useful Shorts** in the XLReporter Start menu for other applications that can be launched from a pushbutton.

Web Integration

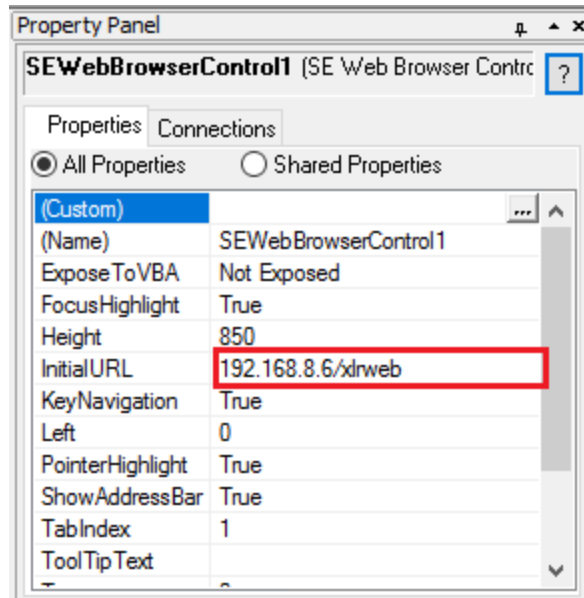
Create a new display in FactoryTalk View Studio. For the purpose of this document we will reference this new display as *XLRdisplay*. Note that an existing display can also be used as a starting point.



On the new display, add a Web Browser object. It is suggested that this is made full screen.

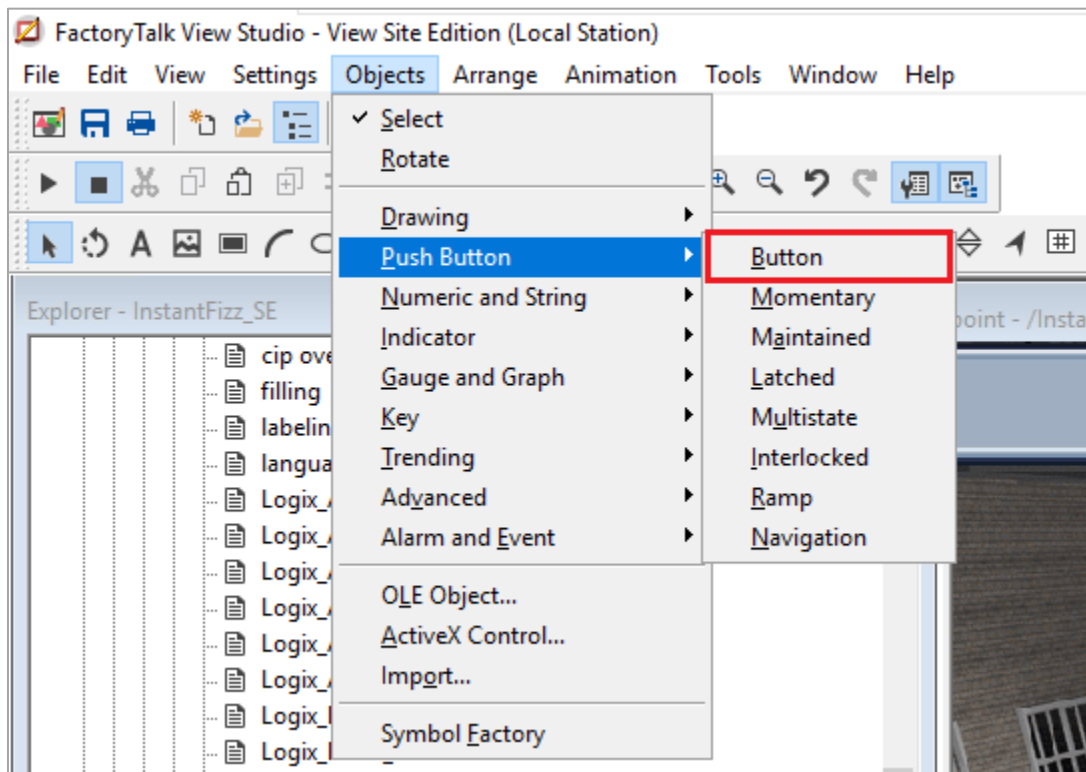


In the **Properties** panel set the browser's **InitialURL** property to `http://<xlreporter server>/xlrweb` where `<xlreporter server>` is the IP address of the machine where XLRreporter is installed.

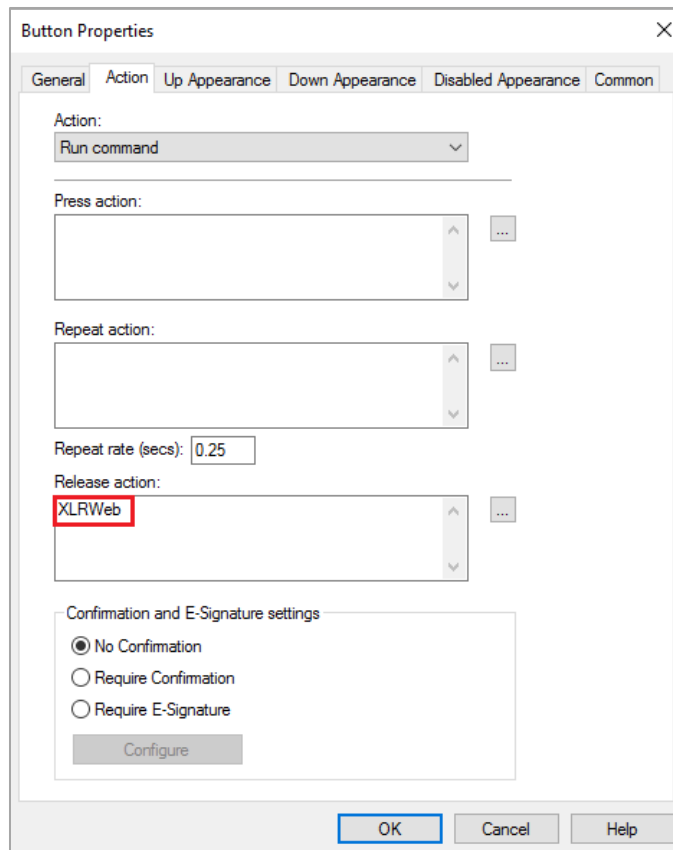


Launch Display

The new display *XLRdisplay* can be launched by a pushbutton or other FactoryTalk objects.



The **Push Button** object is found in the **Objects** menu in FactoryTalk View Studio. Once the button is added to a Display, right-click the button and open **Properties**.



Under the **Action** tab, set **Release action** to the name of the display containing the web browser control (*XLRdisplay* in this example).