

Integrate XLReporter Into FactoryTalk ViewPoint

Overview

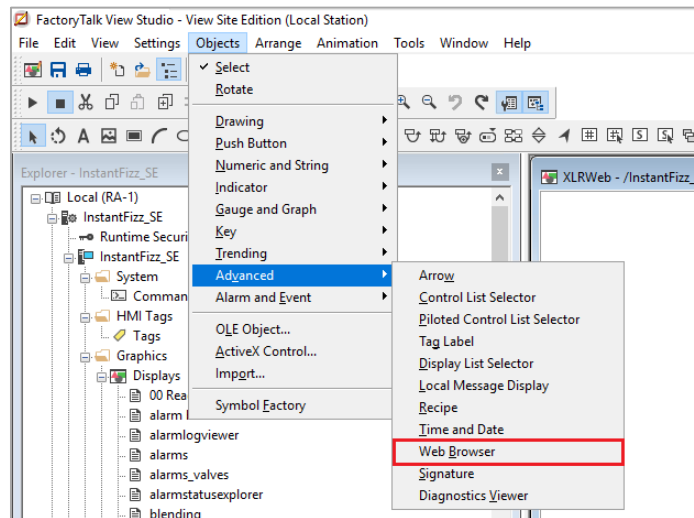
FactoryTalk® Viewpoint provides a secure interface with FactoryTalk View's graphics, trending, and alarming applications through a web browser. With XLReporter integrated into this solution, the user experience is expanded to viewing and producing reports on-demand.

Prerequisites

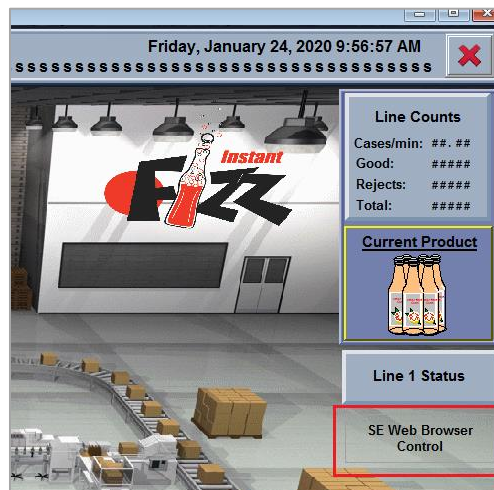
- The distributed version of XLReporter must be installed and configured.
- The XLReporter server must be accessible from the FactoryTalk Viewpoint clients. This would be the case if XLReporter is installed on the same machine as FactoryTalk View SE.

Integration

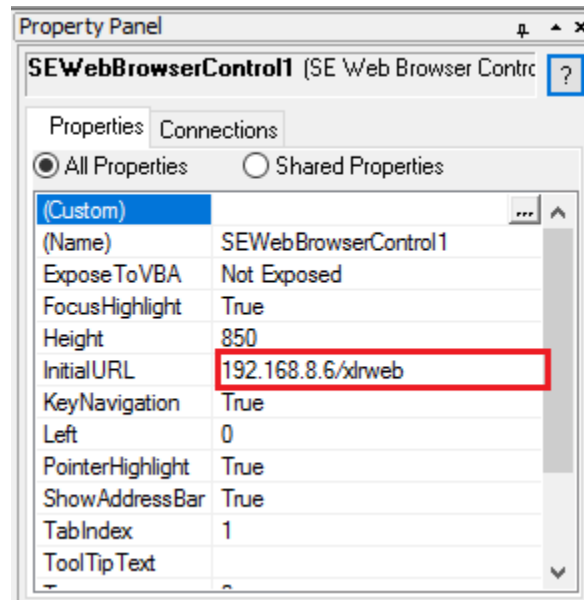
From FactoryTalk View Studio, open the Display that will have an integrated XLReporter web client.



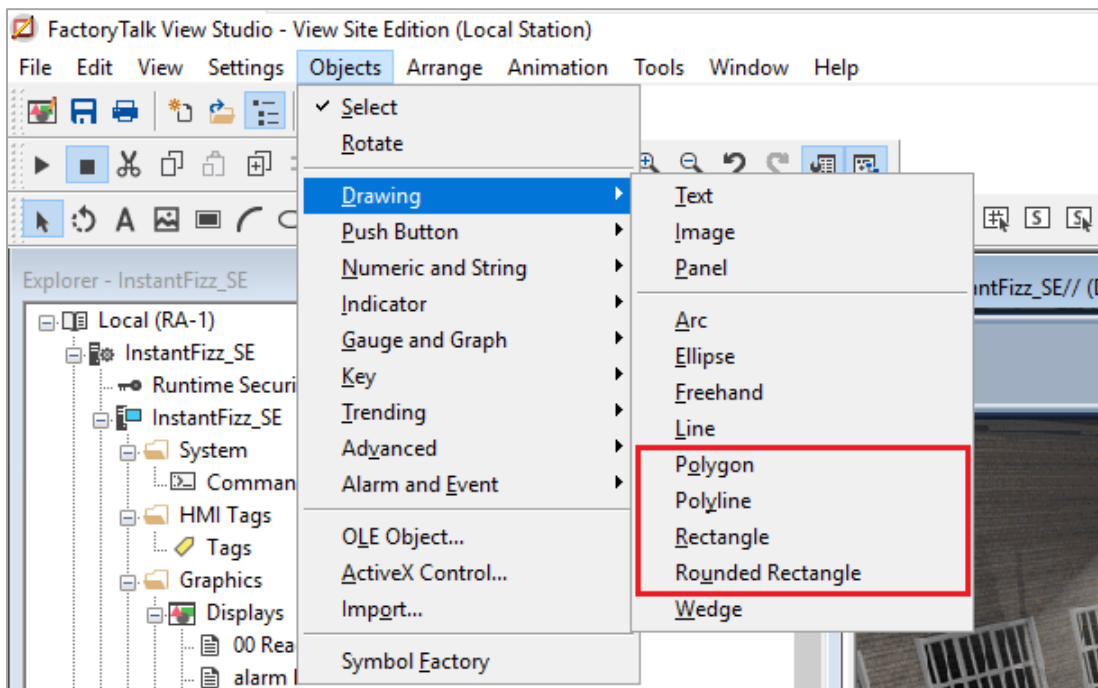
Add a Web Browser object. This control is to be used as a button, so size it accordingly.



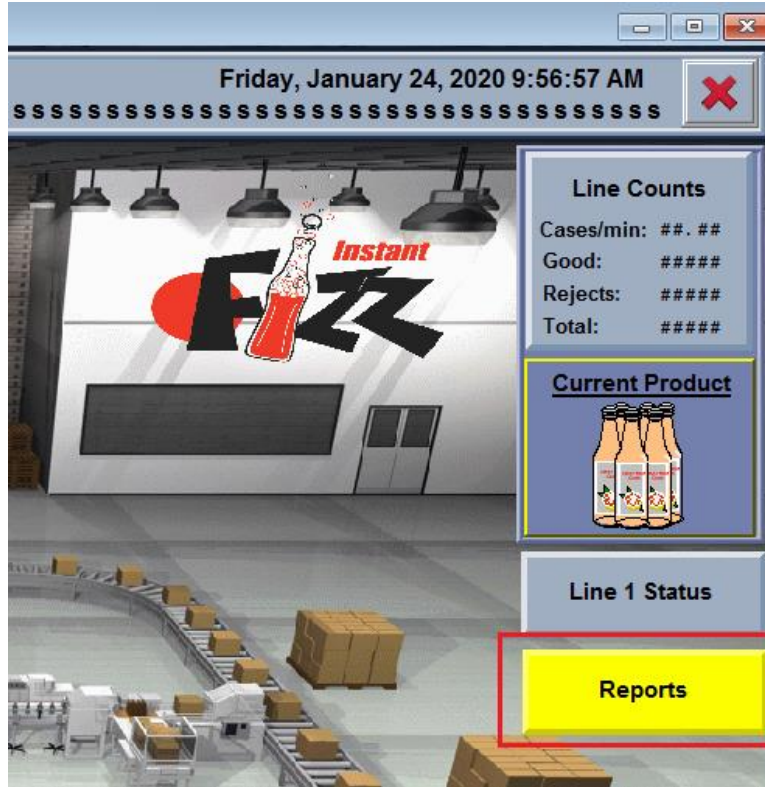
In the **Properties** panel set the browser's **InitialURL** property to `http://<xlreporter server>/xlrweb` where `<xlreporter server>` is the IP address.



Add a **Drawing** object over the web control



Locate and size the drawing object over the web control



Publish Display to ViewPoint

To publish the display to FactoryTalk ViewPoint, open **FactoryTalk ViewPoint Administration** from the **Rockwell Software** program group, and follow the wizard.

Notes

The FactoryTalk ViewPoint interface does not natively support the SE web browser ActiveX control. When the web browser control is used in ViewPoint it renders as a hyperlink which has been obscured by the Drawing object.