

## Configure Microsoft SQL Server

### Overview

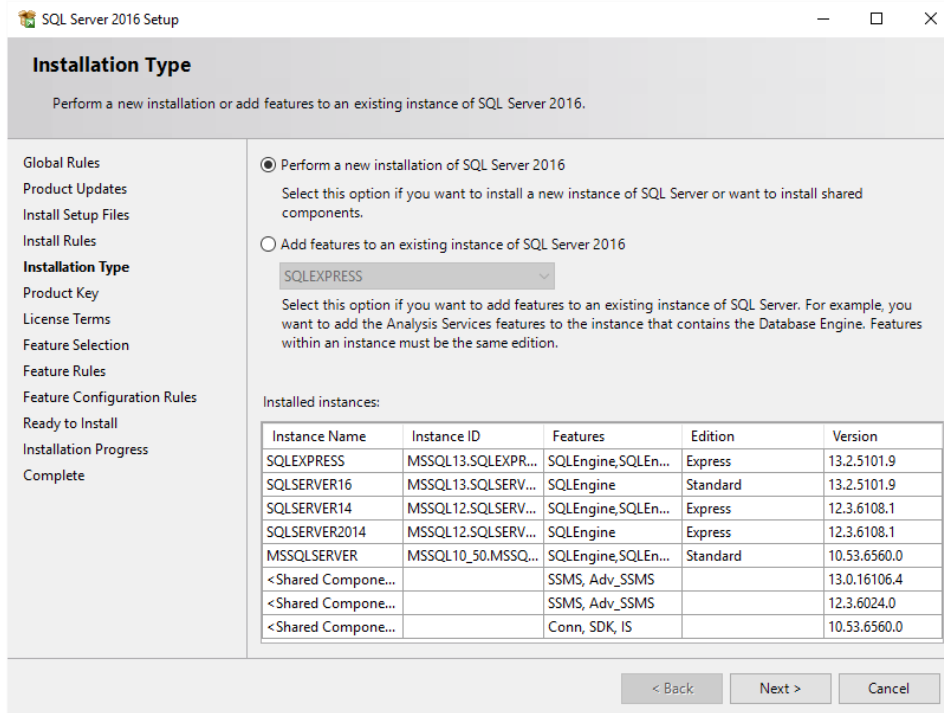
Microsoft SQL Server is a relational database that is used to store data in tables. Microsoft SQL Server Express is a lightweight version of SQL Server which is free to download, distribute and use.

To use SQL Server, an instance needs to be created. This represents a complete SQL Server which contains its own copy of the server files, databases and security credentials. The Microsoft SQL Server Management Studio is used to create and manage SQL Server instances and so it is suggested that this is downloaded.

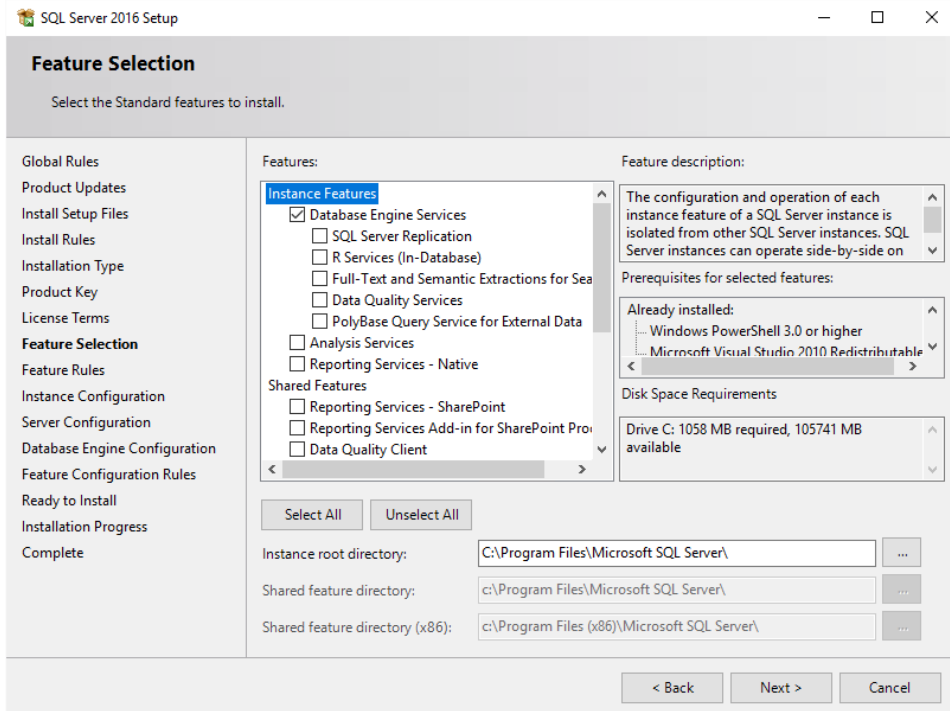
This document describes how to setup a database in either SQL Server or SQL Server Express 2008 and above.

### Create a SQL Server Instance

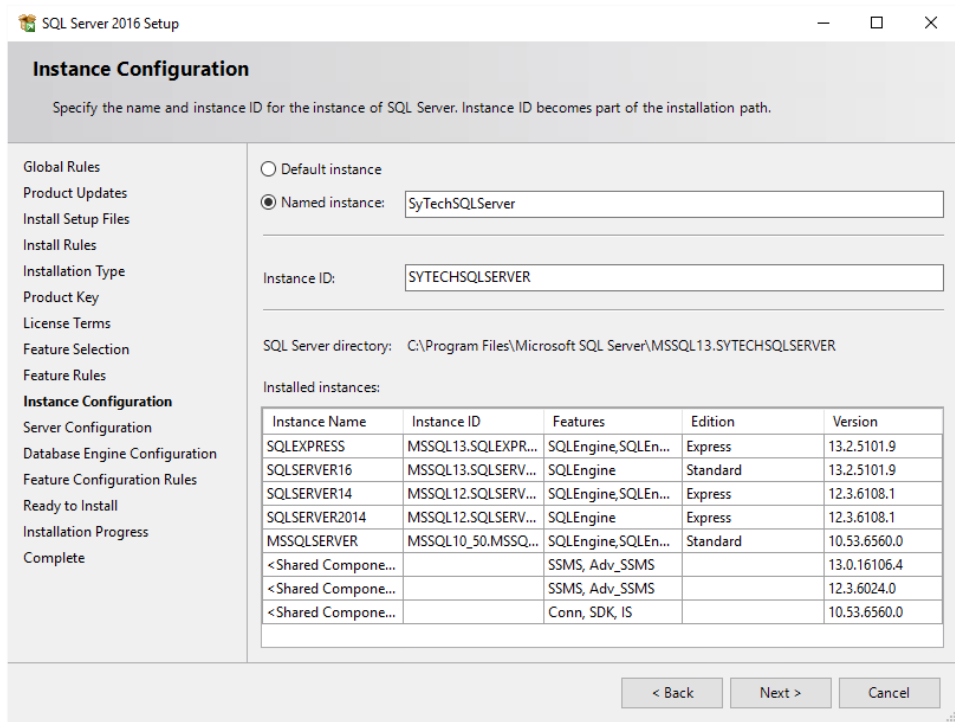
Start the SQL Server Installation Media and select Installation, **New SQL Server stand-alone installation or add features to an existing installation.**



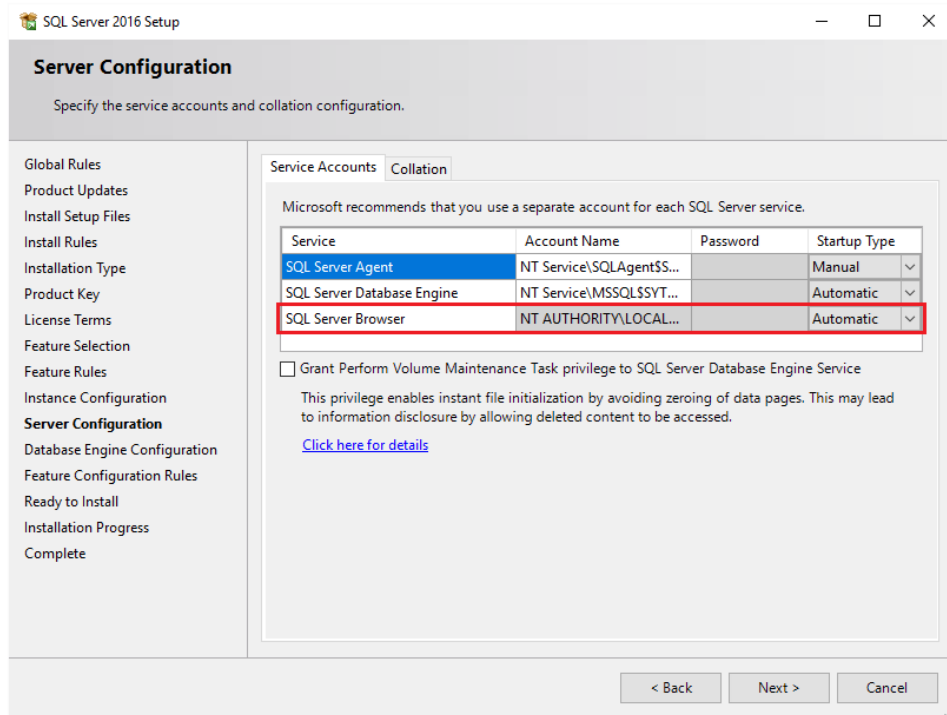
- Check **Perform a new installation of SQL Server.**



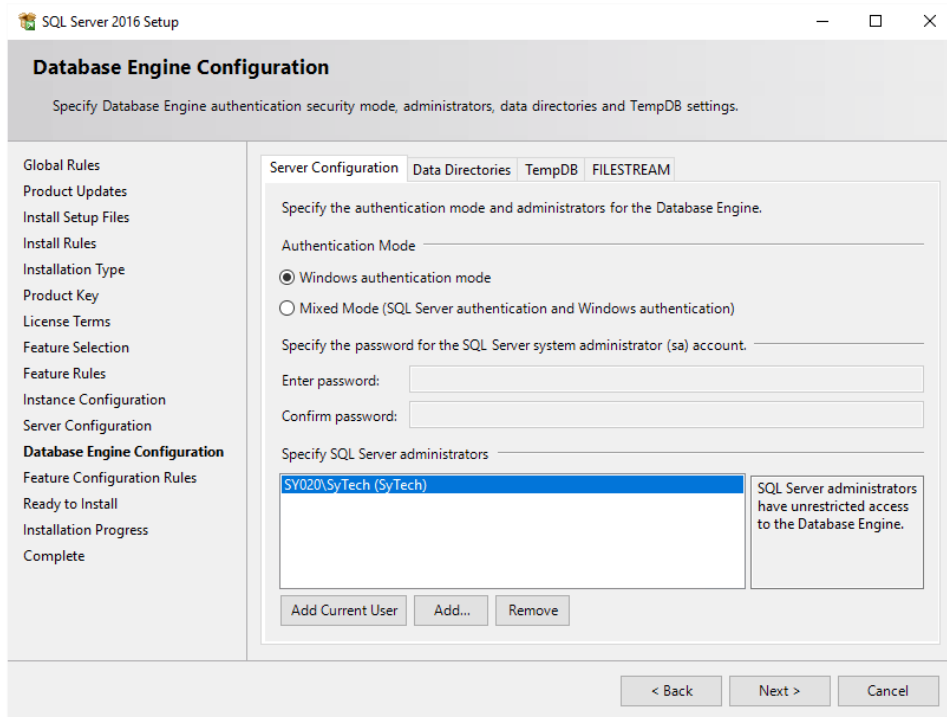
- Check the features to install. At a minimum check **Database Engine Services**.



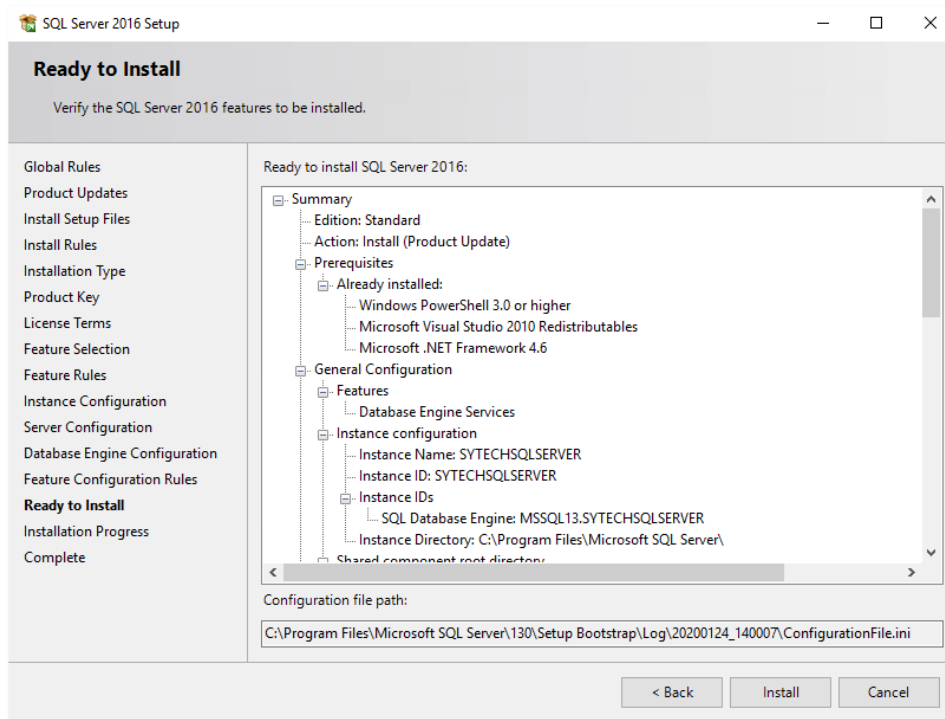
- Enter a **Named Instance**.



- Set **SQL Server Browser** to *Automatic*.



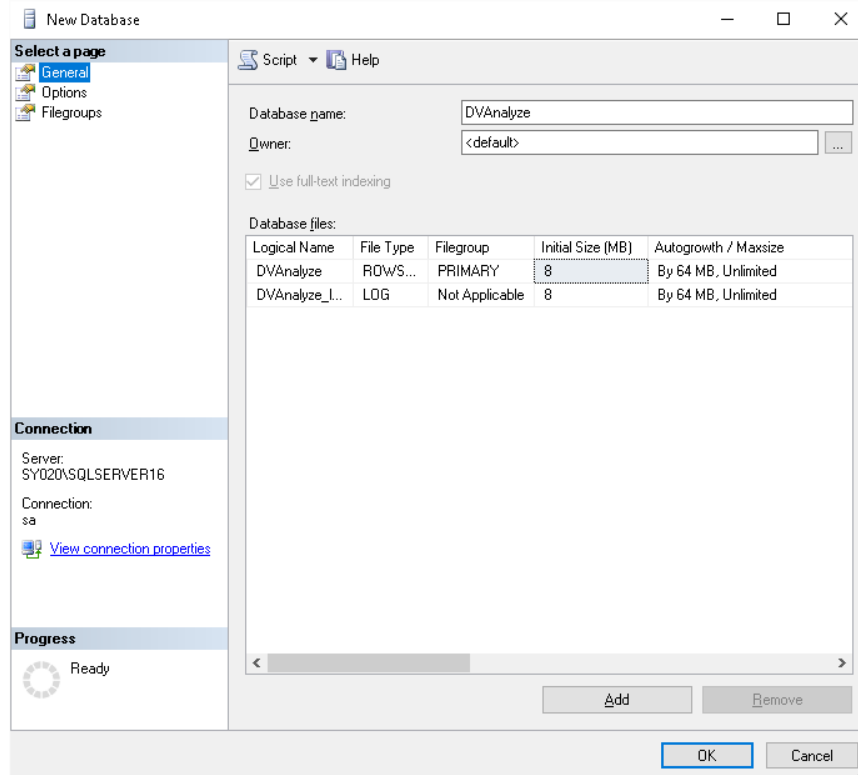
- Click **Add Current User** to give the current Windows account permission to the database.
- If the database will be accessed across the network enable **Mixed Mode**.



- Click **Install** to start the setup of the Instance.

## Create a Database

Open **Microsoft SQL Server Management Studio** and connect to the SQL Server instance. In the Studio, expand the instance. Select **Databases**, right-click and select **New Database**.



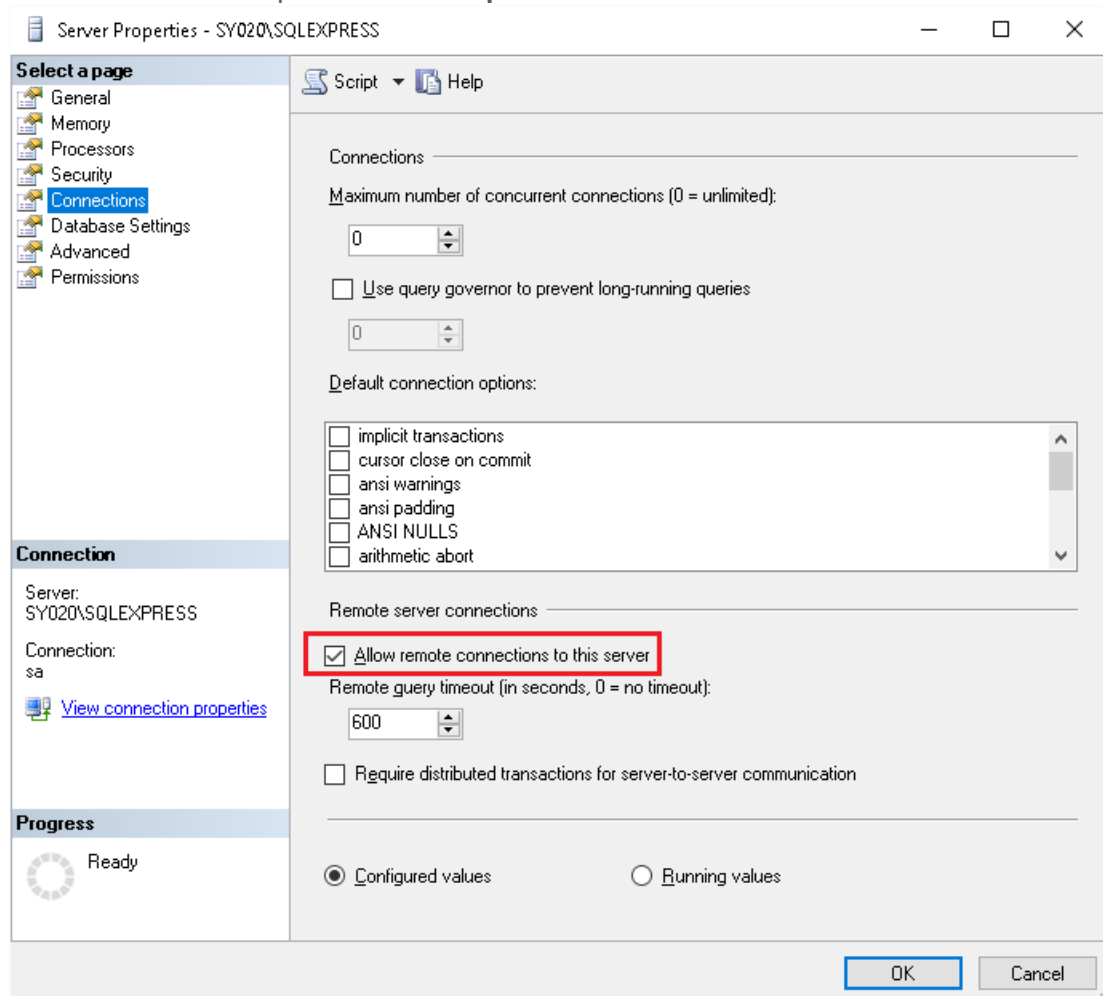
- Set the **Database name** to something meaningful.

## Remote Connection

If the SQL Server is remote to where **XLReporter** is installed i.e., on a different workstation then remote connections must be enabled in SQL Server.

Open the SQL Server Management Studio and connect to the SQL Server instance.

- Right click the server at the top and select **Properties**.



- Under **Select a Page**, select **Connections**.
- In the **Remote server connections** section, check **Allow remote connections to this server**.

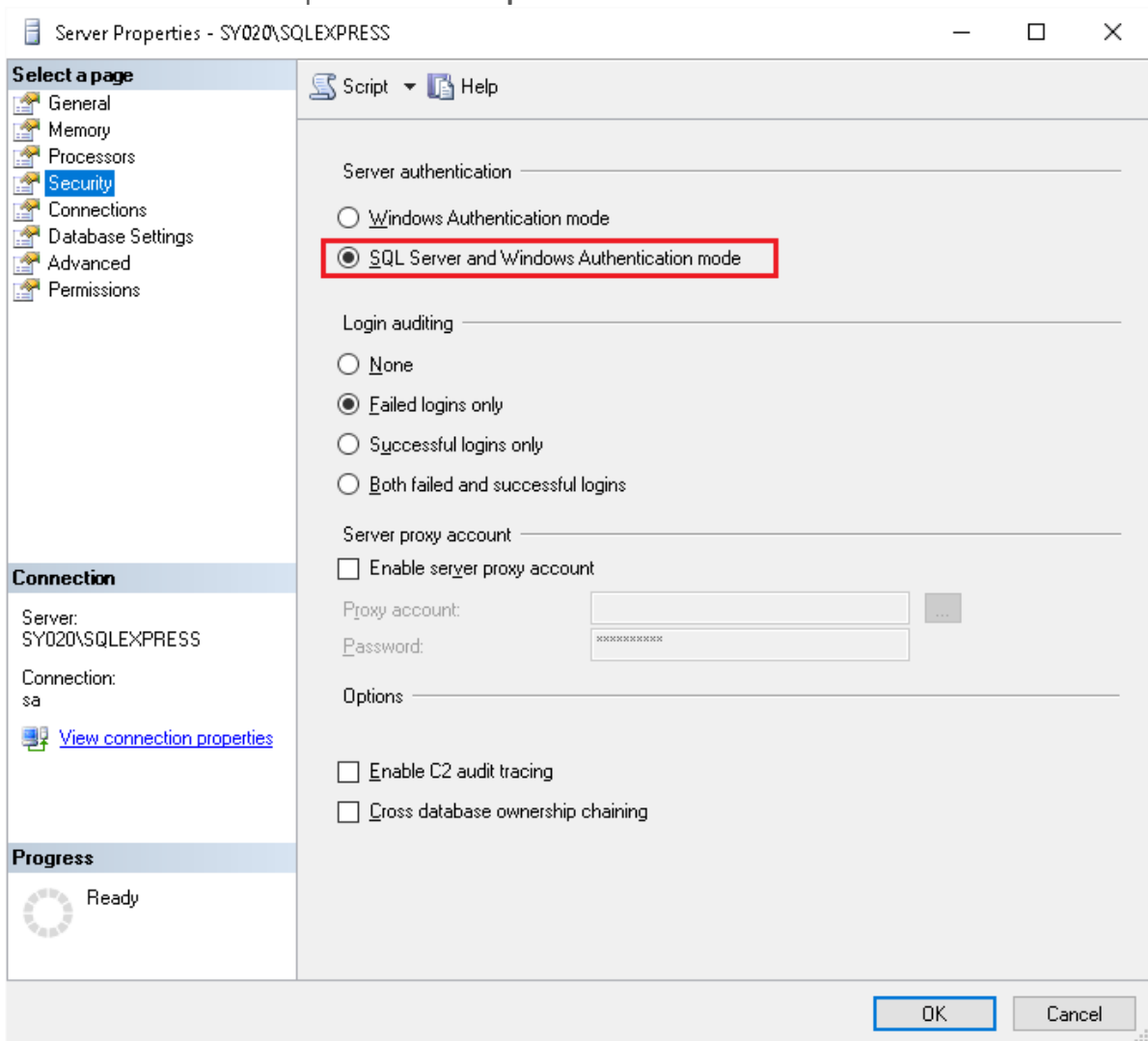
## Authentication

When a XLReporter connects to SQL Server, it needs to provide authentication credentials. Two types of authentication are supported by SQL Server:

- **Windows Authentication**  
The credentials used will be those of the active Windows user. For a remote connection, this credential will fail unless an identical account is available on the remote system.
- **SQL Server Authentication**  
The credentials used will be those of users that have been created in the SQL Server database. This can be used anywhere on the network.

To use SQL Server authentication, open the **SQL Server Management Studio** and connect.

- Right click the server at the top and select **Properties**.

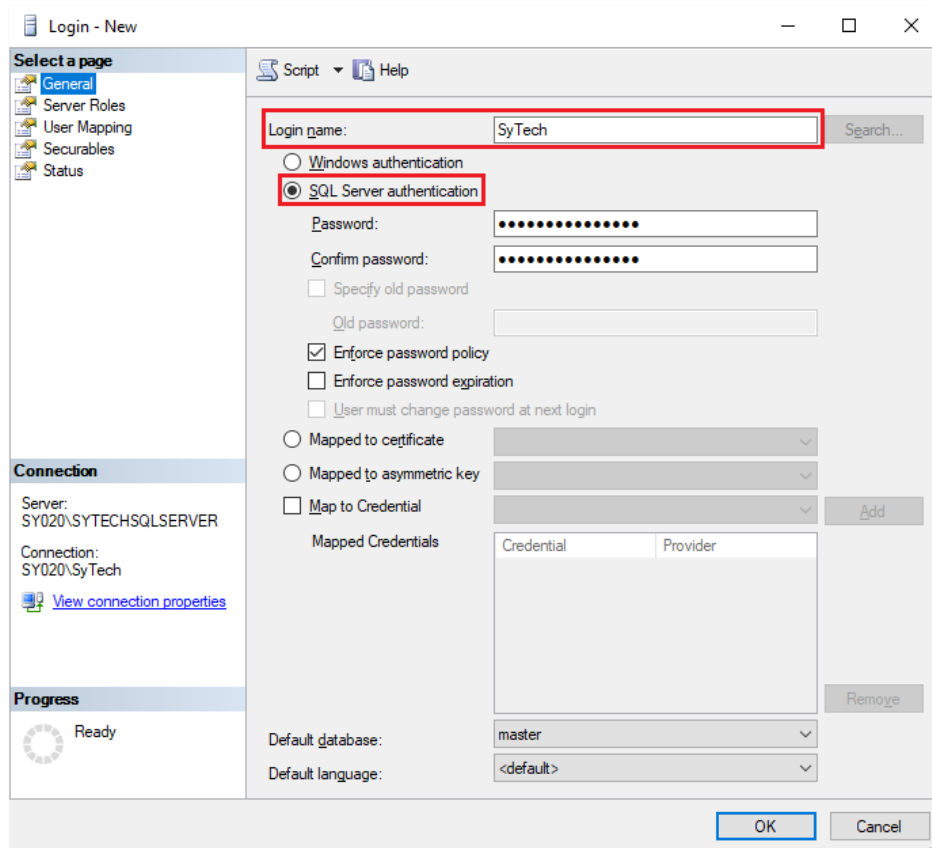


- Under **Select a Page**, select **Security**.
- In the **Server Authentication** section, select **SQL Server and Windows Authentication mode**.

## Create SQL Server Users

If SQL Server authentication is the preferred way of connecting to the database, then users will be required.

Expand **Security** and right-clicking **Logins**, select **New Login**.

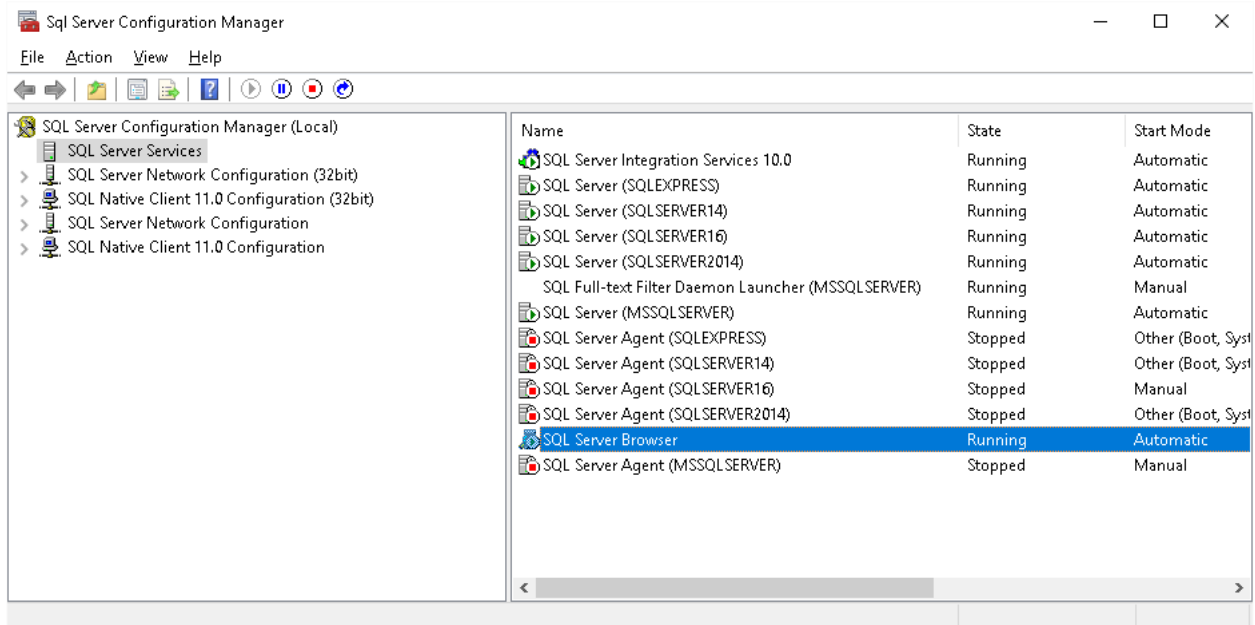


- Enter a **Login name**.
- Select **SQL Server Authentication**.

## Browsing

To browse SQL Server names across the network, the **SQL Server Browser Service** needs to be enabled.

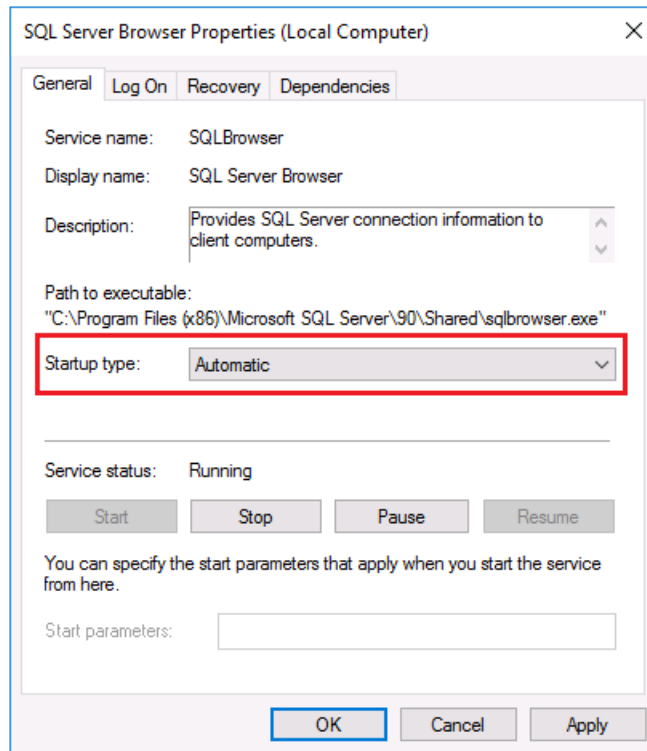
From the **Microsoft SQL Server** program group, open **SQL Server Configuration Manager**.



- Under **SQL Server Configuration Manager (Local)** select **SQL Server Services**.
- On the right, right-click **SQL Server Browser** and choose **Start** to start the service.

If Start and Stop are disabled this means that the service itself is disabled. To enable, open the Windows **Control Panel** and open **Administrative Tools, Services**.

- Locate the SQL Server Browser service and double click on it to access **Properties**.



- In **Properties** set **Startup type** to *Automatic*.
- Click **OK**.

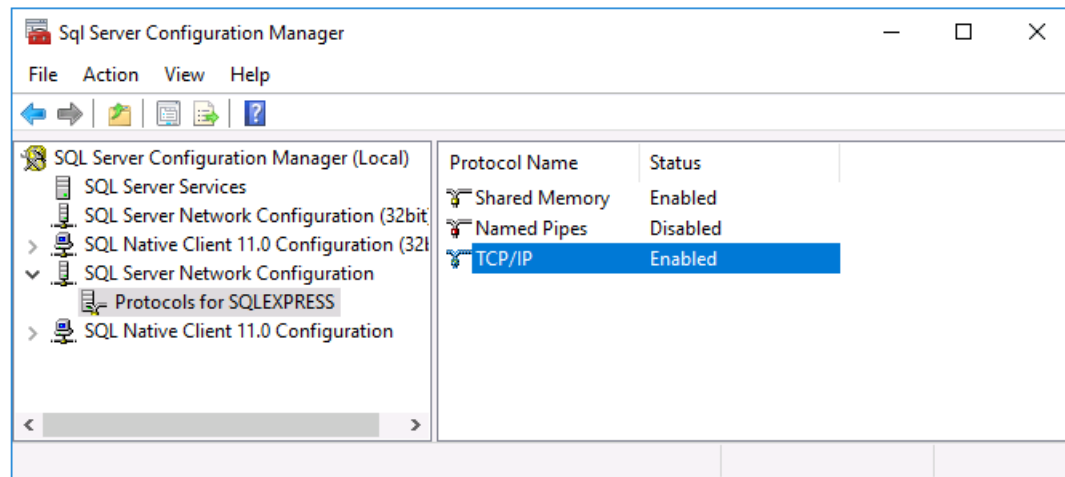
Return back to the **SQL Server Configuration Manager** and enable the **Browser** service.



## Protocols

To access a SQL Server instance across the network it may be required to enable the TCP/IP protocol to make the connection.

From the Microsoft SQL Server program group, open **SQL Server Configuration Manager**.



- Under **SQL Server Configuration Manager (Local)** expand **SQL Server Network Configuration** and select **Protocols** for the instance configured.
- On the right, right-click **TCP/IP** and choose **Enable** to enable the protocol.