

Provide Feedback to the Process

Overview

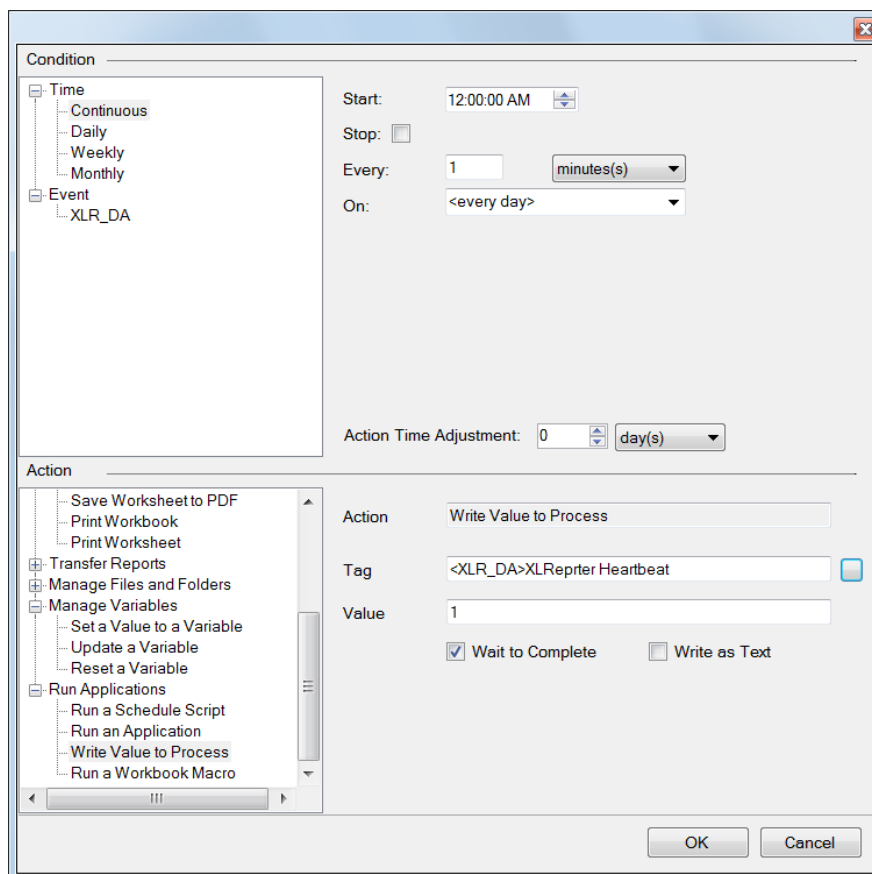
XLReporter provides feedback to the process at two levels, either from **XLReporter's** built-in **Scheduler** or from the report. The scheduler approach is typically used when the process requires a 'heartbeat' to indicate that the reporting system is active. The workbook approach is used when the process requires a signal that all or a section of a report has been populated.

Feedback From the Scheduler

In the **Scheduler** the *Write Value to Process* action is provided feedback.

To configure, from the **XLReporter Project Explorer**, under the **Project** tab, select **Schedule Designer**.

Select **Add** to add a new schedule action.

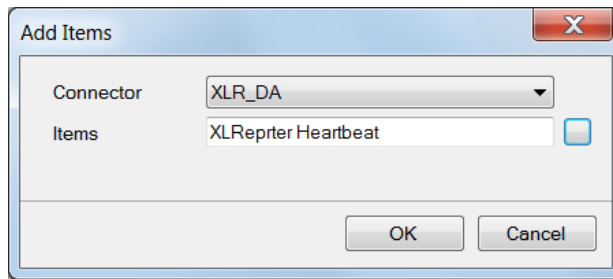


Under **Condition**,

- Set the interval of the feedback e.g., *1 minute*

Under **Action**,

- Expand *Run Applications* and select *Write Value to Process*.
- For Tag, click the browse pushbutton [...].



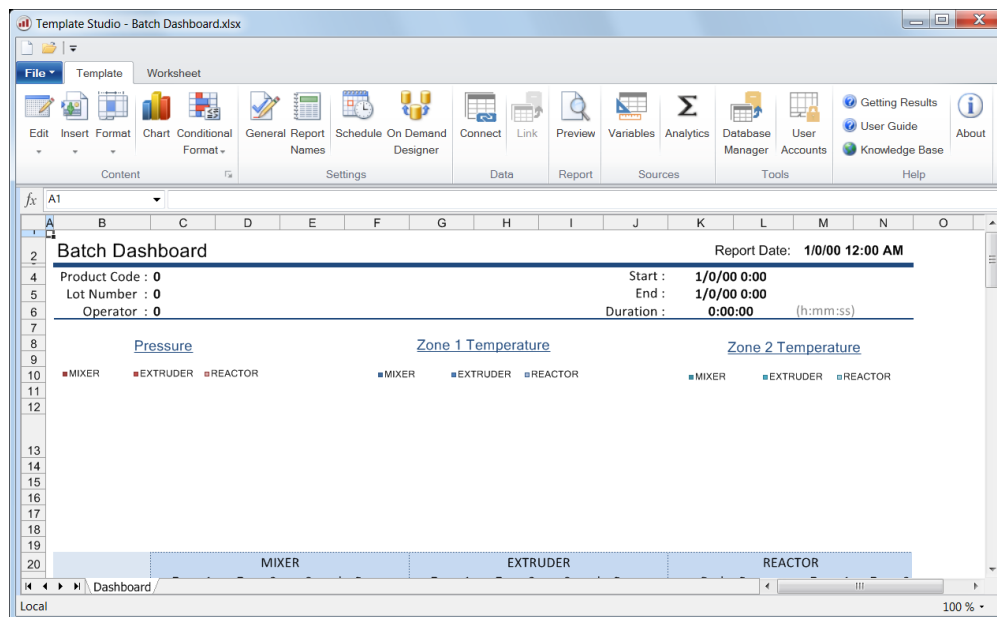
- Set the **Connector** to a real-time connector configured in the project.
- For Items, click the browse pushbutton [...] and select a tag to write the value to.
- Click **OK** to fill in **Items** and **OK** again to return to the schedule action.
- Set the **Value** to what should be written to the selected **Tag**.

Now, when the **Scheduler** is running, the **Value** is written to the **Tag** at the interval specified.

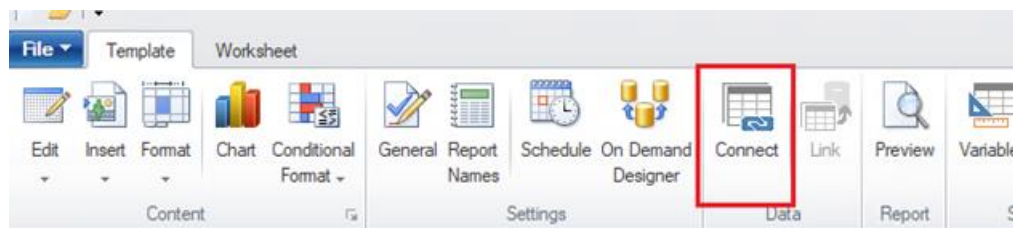
Feedback From the Report

XLReporter can take any value in the report workbook and write it back to the process with the **Data Export To Tag List** management function. This can be used to write back a fixed value in a cell, the results of an Excel formula of even a value from another data source like a historian or relational database.

To configure this, from the **XLReporter Project Explorer** under the **Home** tab, select **Template Studio**. In the studio, open a template that can be edited for feedback.



Select **Data, Connect**.



Navigate to the **Manage** tab.

Group	Type	Source	Target	Place
*				

- Set the **Category** to *Data Export*.
- Set the **Type** to *To Tag List*.
- Under **Apply To**, set the **Cell** to the cell location that holds the value to be written back to the PLC.

The process tag to write to is specified in the **Configuration** setting. Select the browse pushbutton [...] under the **Value** column.

Under the **Setup** tab,

Export

Name: Batch Dashboard

Setup | Tag List

Connector: XLR_DA

- Set the **Connector** to a **Real-time Connector** in the project.

Under the **Tag List** tab,

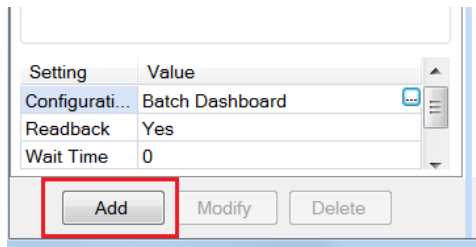
Export

Name: Batch Dashboard

Setup | Tag List

Cell	Tag	Type
\$A\$1	Report Complete	Number

- Select the first row under the **Tag** column.
- Click the browse pushbutton [...] to open the tag browser.
- Select the tag to receive the exported value.
- Click **OK**.
- The **Cell** column should be set to the cell with the value to write.
- Click **OK** to save the configuration and return to the Connection dialog.



- Click **Add** to add the management connection to the template.

When the report is updated, the value will be written from the **Cell** to the process tag.

Note that Management connection are processed *after* Data connections so the feedback occurs *after* the report is populated. To “harden” the feedback, the value written back to the PLC could be a checksum from the report content.