

Event Frames

Overview

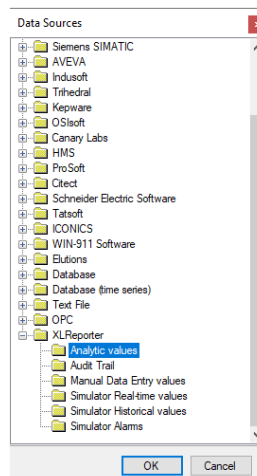
Event Frames are determined from live values of the process by monitoring a start and end event, such as the start/end of a batch, start/end of a machine cycle, or the start/end of a production phase.

Event Frames can be recorded to a database so that a history of their values is available for reporting purposes, for instance, in **Stacked Reports** (please refer to the **Stacked Report** documentation).

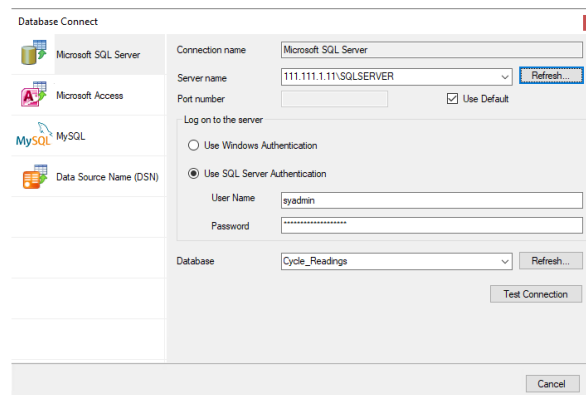
Event Frames monitor two events. The first event captures the start date and time along with process values (**Update** action) and the second event captures the end date and time (**Store** action) which makes the frame complete.

After a **Store**, the current values of the **Event Frame** are available for reports using a **Variable** connection.

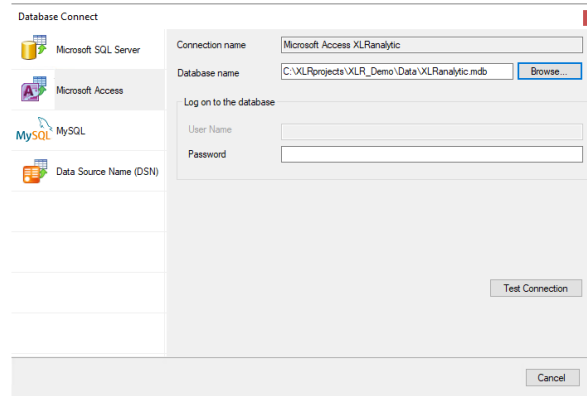
Event Frames require the **Analytic Connector** to be created. From the **Data** tab of the **Project Explorer**, select **Connectors**.



- Choose **XLReporter, Analytic values**
- Click **OK** to open the connector configuration.
- Select the **[.]** button next to the **Primary Database Type**, this will open the **Database Connect** window.



If possible, use a Microsoft SQL Server (including Express) database. Alternatively, a Microsoft Access database is included in the **Data** folder of your project which can be used to store analytic values. Click **Test Connection** to verify database connectivity.

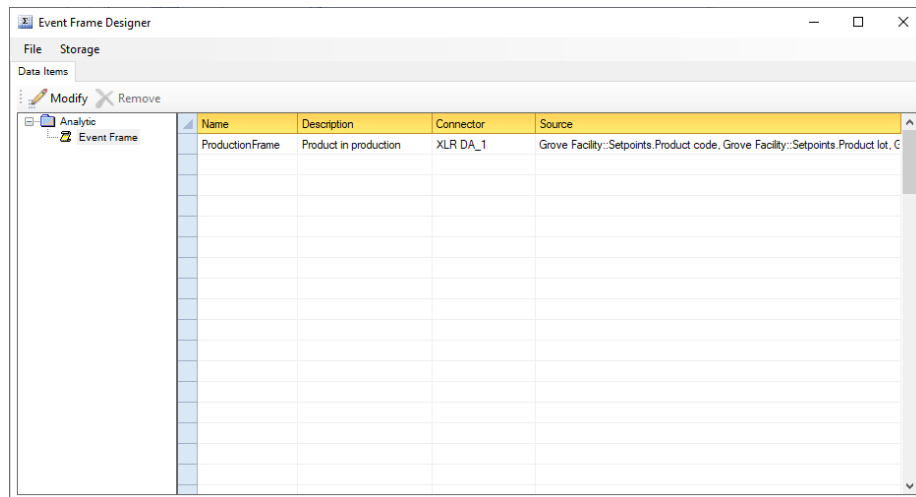


On the **OK** of the data connector configuration, the required event frame tables will be created in the database.

If a history of Start and End times is not required to be stored to a database, it is recommended to instead utilize **Date Time Variables** instead. For more information, see the **DESIGN, Variables** document in the **Document Library**.

Event Frame Designer

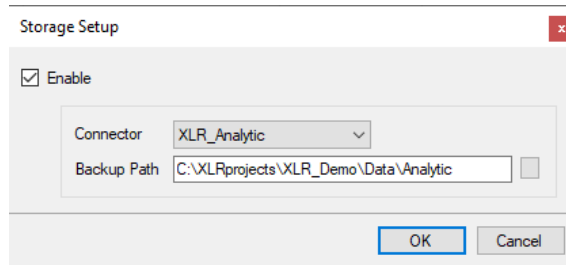
The **Event Frame Designer** is used to configure **Event Frames** and the corresponding database storage options. The designer is opened from the **Data** tab of the **Project Explorer** by selecting **Event Frames**.



The display consists of a **Data Items** tab.

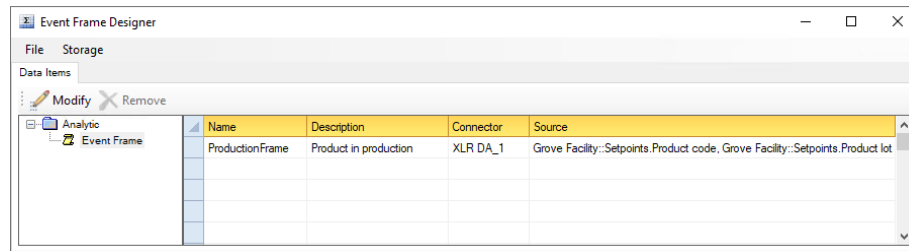
To save changes click **File, Save**. If the Scheduler is running, it is automatically reloaded with any changes.

The **Storage** option shows where the **Event Frame** values are stored. This can be disabled by unchecking **Enable**.



The **Backup Path** is used to cache values in the event of communication failure. When communication is re-established, the cache is forwarded to the database of the **Connector**.

Data Items



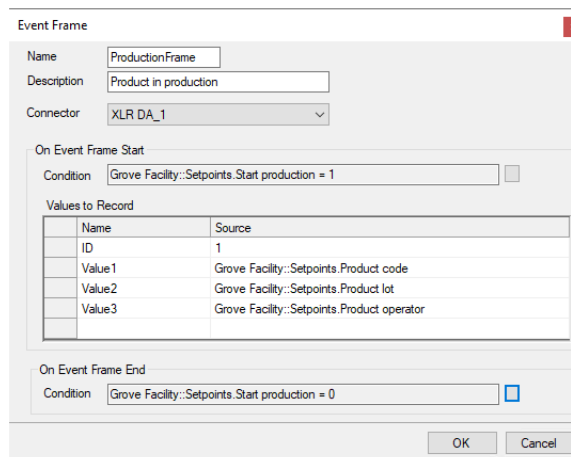
- **Name** is the name of the event frame. This name will be displayed when browsing for event frame values.
- **Description** is a description of the event frame. This description will appear whenever event frames are browsed.
- **Connector** and **Source** collectively define the process value used to calculate the event frame.

To add/modify an item, select a row and double-click, click the **Modify** menu option or select **Modify** from a right click.

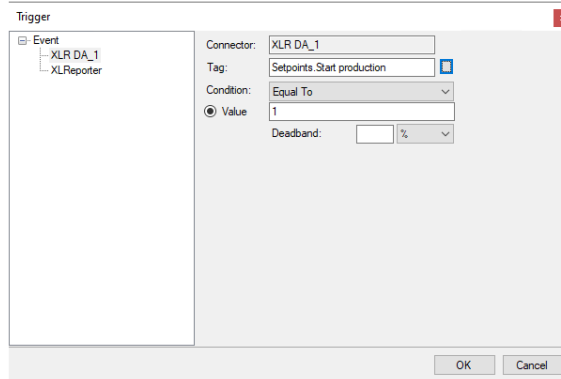
To remove an item, select a row and press the **Delete** key, click the **Remove** button, or select **Remove** from a right click. Note, the Event Frame Designer configuration is saved automatically after selecting **Remove**.

Event Frame

An **Event Frame** stores the timestamps of two events together with the current values of the process at the time of the first event.



The **On Event Frame Start** shows the **Condition** to monitor to signify the start. Click the browse button [...] and define the condition trigger. When the condition is triggered, the date/time and the **Values to Record** are read from the process and made part of the frame.



The **On Event Frame End** shows the **Condition** to monitor to signify the end at which time the date/time is made part of the frame and the Event Frame is complete. Click the browse button [...] and define the condition trigger.

For more information on condition **Triggers**, see the **Schedule Design** documentation.

If **Event Frames** are stored to a database, they will be stored in a fashion similar to the following:

TagIndex	StartDateTime	EndDateTime	Value1	Value2	Value3	Value4
0	10/1/2022 1:32:00 AM	10/1/2022 4:07:00 AM	P990-150	1200404	Giles Smith	
0	10/1/2022 7:08:15 AM	10/1/2022 1:01:21 PM	P02369-80	1200362	Giles Smith	
0	10/1/2022 4:07:45 PM	10/1/2022 9:15:32 PM	P02369-80	1200363	John Harvey	
0	10/1/2022 10:01:32 PM	10/1/2022 11:56:11 PM	P72-0809	1210043	Giles Smith	
0	10/2/2022 6:32:00 AM	10/2/2022 10:08:05 AM	P72-0809	1210044	Giles Smith	
0	10/2/2022 1:17:11 PM	10/2/2022 4:21:08 PM	P50-30318	1200350	John Harvey	
0	10/2/2022 7:44:10 PM	10/2/2022 11:12:08 PM	P50-30318	1200351	John Harvey	
0	10/3/2022 1:12:44 AM	10/3/2022 4:45:00 AM	P50-30318	1200352	Giles Smith	
0	10/3/2022 9:08:07 AM	10/3/2022 11:14:14 AM	P990-150	1200401	Giles Smith	
0	10/3/2022 1:26:10 PM	10/3/2022 6:32:15 PM	P990-150	1200402	John Harvey	
0	10/3/2022 7:28:03 PM	10/3/2022 11:32:39 PM	P990-150	1200403	John Harvey	

On End
On Start

Event Frames provide the following **Fields**:

- **:Stdu** (start date and time in universal format)
- **:Endu** (end date and time in universal format)
- Up to 4 custom fields referenced by the **Name** given to the value in the **Event Frame** definition.

Tutorial

For a tutorial on event frames, please refer to the document **xlreporter-training-event-frames** which is located in the **_docs** folder of the installation. Alternatively, from the **Project Explorer**, select **Documentation**, expand **GETTING STARTED** and select **Report from Event Frames**.

Information in this document is subject to change without notice. SyTech assumes no responsibility for any errors or omissions that may be in this document. No part of this document may be reproduced or transmitted in any form or by any means, electronic or mechanical, for any purpose, without the prior written permission of SyTech.

Copyright 2000 - 2023, SyTech. All rights reserved.

XLReporter® is a registered trademark of SyTech (dba of TheReportCompany, LLC).

Microsoft® and Microsoft Excel® are registered trademarks of Microsoft, Inc.
All registered names are the property of their respective owners.