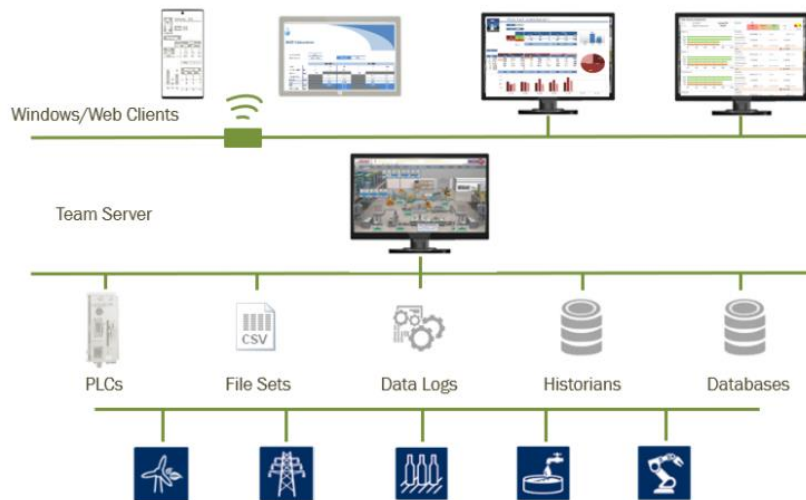


Web Portal

Overview

The web portal is installed with the **Distributed** edition. It gives remote access to reports and forms on the server. Using the web portal you can generate reports on demand, view scheduled reports generated automatically in any format and collect manual data.



There are 2 ways to access the web portal:

- Team clients installed on Windows PCs
- A web browser from any device on the network

Initial Setup

Before the web portal can be accessed, the following needs to be set up.

Internet Information Services

In order to install the **Distributed** edition, Internet Information Services must be enabled in the operating system.

Internet Information Services (IIS) is provided by Microsoft and is delivered as part of the operating system. By default, IIS is not installed and so it must be done manually by an **Administrator** of the system.

The procedure for installing and configuring IIS depends on the operating system.

Windows 8/ Windows 10

To install, open the **Windows Control Panel** and select **Programs and Features**.

Select **Turn Windows Features on or off** to display a list of Windows Features. Check **Internet Information Services**.

Expand **Internet Information Services** then **Web Management Tools**. Make sure the following items are checked:

- IIS Management Console

Expand **Internet Information Services, World Wide Web Services**.

Expand **Application Development Features** and make sure the following items are checked:

- ASP.NET (4.x)
- .NET Extensibility (4.x)
- ISAPI Extensions
- ISAPI Filters

Expand **Common HTTP Features** and make sure the following items are checked:

- Default Document
- Directory Browsing
- HTTP Errors
- Static Content

Expand **Health and Diagnostics** and make sure the following items are checked:

- HTTP Logging
- Request Monitor

Expand **Performance Features** and make sure the following items are checked:

- Static Content Compression

Expand **Security** and make sure the following items are checked:

- Request Filtering

Click **OK**.

Windows Server 2016 and above

Note: these settings apply to Server 2012 R2, but the user interface is different.

To install, open the **Windows Control Panel** and select **Programs and Features**.

Select **Turn Windows Features on or off** to display **Server Manager**. Select **Add Roles, Server Roles**, then check **Web Server (IIS)**. Add the feature. Under **Web Server Role (IIS)** select **Role Services**.

Expand **Web Server, Common HTTP Features** and make sure the following items are checked:

- Default Document
- Directory Browsing
- HTTP Errors
- Static Content

Expand **Health and Diagnostics** and make sure the following items are checked:

- HTTP Logging
- Request Monitor

Expand **Performance** and make sure the following items are checked:

- Static Content Compression

Expand **Security** and make sure the following items are checked:

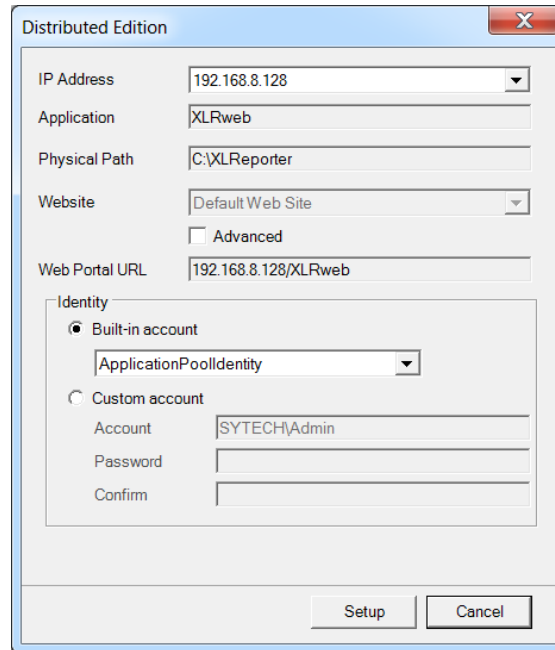
- Request Filtering

Expand **Application Development** and make sure the following items are checked:

- ASP.NET (4.x)
- .NET Extensibility (4.x)
- ISAPI Extensions
- ISAPI Filters

Installation

When installing the **Distributed** edition, you are prompted for some information regarding your system.



IP Address is the IP address of the local machine that users will enter to access the web portal. This is only configurable if there are multiple IP addresses detected on the system.

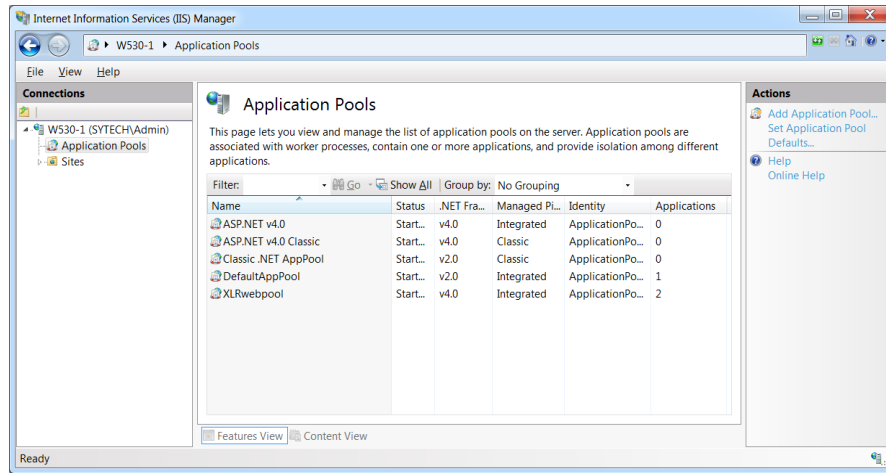
Website defines the site in IIS where the *XLRweb* application is installed. By default, this is *Default Web Site* but if you would like to change this to another site defined in IIS, check **Advanced** and select the **Website** from the list.

The **Web Portal URL** is the URL any user will use to connect to the web portal based on the settings above. This can be copied to the clipboard to use after installation is complete.

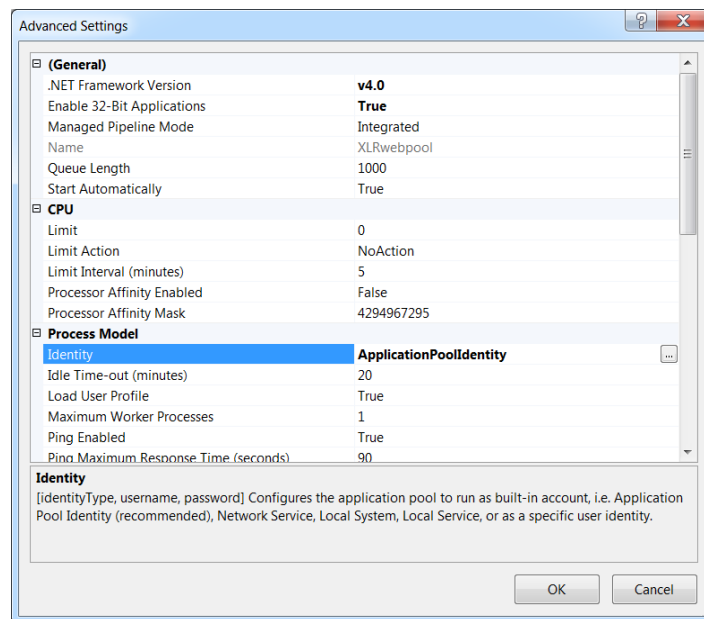
Identity

These settings define the user account under which the web portal runs. By default, this is set to **ApplicationPoolIdentity** which is a built-in, very low-level user. If **XLReporter** needs to access data or publish reports to other places on the network that require a higher-level user, this can be changed to either another **Built-in account** or a **Custom account** which is a configured user on the machine or domain.

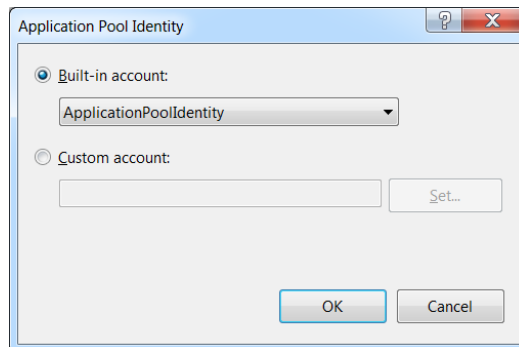
If the Identity needs to be changed after installation, it can be done through the **Internet Information Services (IIS) Manager** (accessible from the Windows Control Panel under Administrative Tools).



Expand the machine name and select **Application Pools**. On the right select **XLRwebpool**, right-click and select **Advanced Settings**.



In the **Process Model** section, select **Identity** and click the browse pushbutton [...].



Here are the same options that are presented by **XLReporter** during installation.

User Accounts

If user accounts are not enabled in the project on the server, when a user navigates to the web portal using a web browser, they are automatically logged in as a **Guest**. By default the user has full rights to every template in the project to generate reports on demand as well as viewing any existing scheduled reports.

If user accounts are enabled in the project on the server, when the user navigates to the web portal using a web browser they are prompted for **User Credentials** to log in.

In order to use the web portal with a Windows client, user accounts must be enabled.

Client Licensing

Clients are licensed concurrently whether you are accessing the web portal using a web client or a Windows client. Once the number of logged in users exceeds the number of client licenses, any log in is rejected until one or more users logs off.

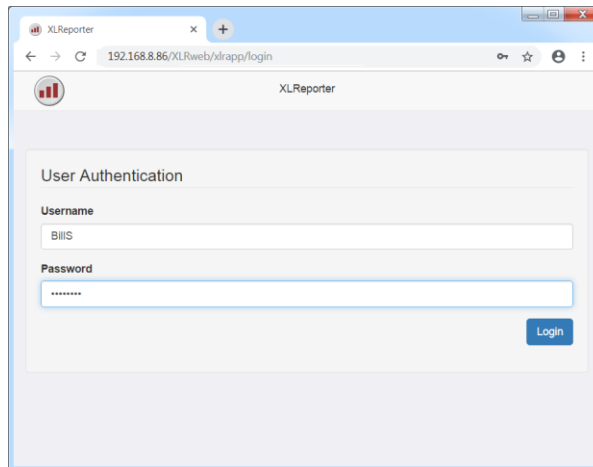
Web Clients

The web portal can be accessed by any device with a web browser.

To do so, simply open your web browser and navigate to:

<http://IPAddress/XLRweb>

Where *IPAddress* is the IP address of the team server.



If user accounts are enabled, log in using a valid user account set up on the server and you have access to all the templates and reports on the server. Otherwise, you are navigated straight into the list of templates.

Note, if the website that the *XLRweb* application is installed under is not using port 80, the port number must be specified as part of the IP address in the URL. For example, if the website is using port 81, the URL to access the portal would be:

<http://IPAddress:81/XLRweb>

Guest Account

If user accounts are enabled in the project and you want to provide a simple login for casual users that can be used by multiple users at one time, in User Accounts, create an account named **Guest**. Assign the Guest account to a group with the privileges you want casual users to have.

Please note that while multiple users can be logged on as **Guest** at the same time, each user occupies one of the available client licenses.

User Preferences

User Name bills	Email wshephard@sytech.com
First Name William	Last Name Shephard
Location Name 	System Version 141
Language English	Show Template Category Yes
Reports Published on Server View/Download Excel Files	Reports On-Demand Download PDF Format
Report Filter 10 <input type="radio"/> Days <input checked="" type="radio"/> Count	Auto Hide Panel No

Save

Once logged in, click on your name in the upper right to access the **Preferences**.

If the project has been configured with categories, **Show Template Category** can be toggled so the template list in the web portal to show categories. Note that if the project is not configured with categories this option is disabled.

Reports Published on Server determines the view and download format of the reports that have been created on the server by the scheduler or published to the server by other users. Select between *View/Download PDF Files*, *View/Download Excel Files* and *View/Download HTML Files*.

Reports On-Demand determines the download format of reports that have been produced on-demand in the client. Select between *Disable Download*, *Download PDF Format* or *Download Excel Format*.

Report Filter determines how many reports you can view from each template. This can be expressed in *Days* or as a *Count*.

If **Auto Hide Panel** is set to *Yes*, when a report is generated or viewed from a desktop or tablet, the left panel is hidden and the report becomes full screen automatically.

Click **Save** to store the settings.

Viewing Scheduled Reports

The screenshot shows the 'Aerospace Thermal Uniformity...' interface. On the left, a sidebar displays a list of reports for September 2020, including 'SL-9221 2020-09-22'. The main area shows a detailed report for 'SL-9221 2020-09-22' with the following data:

Furnace Information		Temperature Range		Tolerance ±	
Identification	SL-9221	538	1218	6	°C
Class	2				
Type	C				
Count	10				
Heating Method	Electric				
Controlling Specification	AMS 2750D				
Work Zone	3ft x 3ft x 4ft				
Volume	36 cubic ft				

The report also includes 'Test Load Data', 'Correction Factors', and 'Uniformity Results' for temperatures 538°C, 760°C, 982°C, and 1218°C. Each temperature section shows a table of 10 data points with maximum, minimum, and average values, along with time periods and overshoot percentages. The status for each temperature is 'PASS'.

When a template is selected that has existing reports on the server, a list of the reports is displayed. Select any report to view it in the web browser. Note that the format that is shown is the one selected in **Preferences**.

The report can be downloaded by selecting the download option in the title bar.

SL-9221 2020-09-22 Excel

To hide the left panel and view the report full screen, click the button. To bring the left panel

back, click the button. If you would like the left panel to be hidden automatically whenever you view a report, go to **Preferences** and set **Auto Hide Panel** to *Yes*.

On Demand Reports

Templates can be designed to allow users to specify parameters that drive the report. To see the parameters, select a template.

The screenshot shows the 'Aerospace Thermal Uniformity...' interface with a parameter panel on the left. The parameter panel includes a 'Refresh' button and a table with the following data:

Setting	Value
Furnace	Kiln 1
Date	01 Jun 2021

The main area shows a detailed report for 'SL-9221 2020-09-22' with the following data:

Furnace Information		Temperature Range		Tolerance ±	
Identification	Kiln 1	65	82	6	°C
Class	2				
Type	C				
Count	10				
Heating Method	Electric				
Controlling Specification	AMS 2750D				
Work Zone	3ft x 3ft x 4ft				
Volume	36 cubic ft				


The report also includes 'Test Load Data', 'Correction Factors', and 'Uniformity Results' for temperatures 85°C, 71°C, 87°C, and 82°C. Each temperature section shows a table of 10 data points with maximum, minimum, and average values, along with time periods and overshoot percentages. The status for each temperature is 'FAIL'.

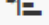
The parameters are listed in the left panel for the template.

In the above example a parameter panel is used to prompt for the **Furnace** name and a **Date**. A versatile set of entry panels is provided in **XLReporter**.

The report can be downloaded by selecting the download option in the title bar.

SL-9221 2020-09-22  Excel

On desktops and tablets, to hide the left panel and view the report full screen, click the  button.

To bring the left panel back, click the  button. If you would like the left panel to be hidden automatically whenever you generate a report, go to **Preferences** and set **Auto Hide Panel** to *Yes*.

Responsive Viewing

Responsive viewing causes the report to respond to the viewport of the device. There are 3 sizes supported:

- Small (mobile phone)
- Medium (tablet)
- Large (PC)

This can be done in two ways:

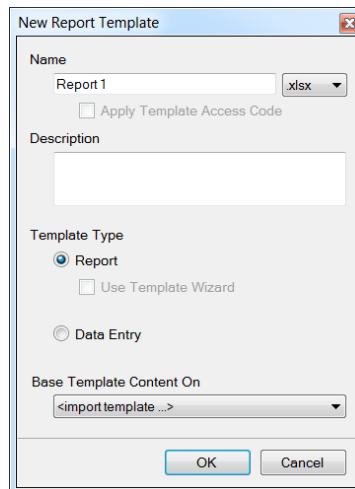
Designated Sheet(s)

In the template workbook, you can designate one or more worksheets for a specific device size by adding “small” or “medium” to the worksheet name.

When the report is generated, if the device is small, any worksheet containing “small” is shown while any other sheet is hidden. Same for medium.

For large, any sheet designated “small” or “medium” is hidden.

Getting Started



When creating a new template from the Design Studio, set **Base Template Content On** to *<import template ...>* and click **OK**. From the **Import** folder select **ResponsiveDesign.xlsx**. This template provides guidelines and sample layouts for all 3 available sizes.

Named Ranges

In the report template you can define one or more ranges as the elements to show when a device of a certain size is used.

For example, if the report contains 15 minute data over the day along with a summary, when viewing the report on a large device like a PC you may want to see everything but when viewed in a small device like a phone you may only want to see the summary.

To designate a range for a specific device size, you must assign a name to that range with the device size, e.g., name cells $B4:E8$ as **Small**. If you want multiple ranges to display for a particular device size, each range should be named **Size_Number**, e.g., *Small_1* and *Small_2*.

You can designate both **Small** and **Medium** ranges. For large devices, the entire report is shown.

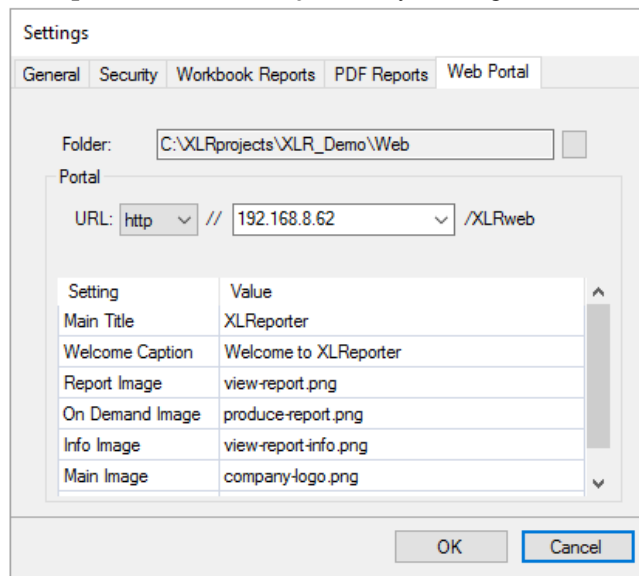
When applying a name to the range, be sure to set the **Scope** to the specific worksheet containing the range. Only names with a scope to a specific sheet are considered, names scoped to the **WORKBOOK** are not considered.

To fit the ranges onto a single worksheet widthwise, your ranges should not exceed 600 pixels. When the range is rendered for the report for the device, if the width is less than 600, the range is resized to as close as 600 pixels as possible to provide you the best view for your device without having to do any resizing.

By default, when ranges are stacked for small or medium, a horizontal page break is inserted to attempt to prevent a range from bridging over 2 sheets. If this is restrictive page breaks can be added manually. When defining the range name, set the end of the name to “_PB”, e.g., “Small_2_PB”. When this range is stacked, a horizontal page break is inserted before the range.

Customizing the Portal

The following options can be customized for the web portal. These changes are made in the on the server from the **Project Explorer** under the **Project** tab by clicking **Web Access**.



Changes are displayed on a new login. If they are not, the browser cache may need to be cleared first.

Titles

Main Title

The main title is seen on the Login page as well as at the top of the template list. By default, this is **XLReporter**.

Welcome Caption

The welcome title is seen above the welcome screen after logging in to the portal. By default, this is **Welcome to XLReporter**.

Images

Report Image

The Report image is seen in the menu after a report template is selected.
The image dimensions are 32 x32 pixels.



On Demand Image

The On Demand image is seen in the menu after a report template is selected.
The image dimensions are 32 x32 pixels.



Info Image

The info image is seen in the menu after a report template is selected.
The image dimensions are 32 x32 pixels.



Main Image

The logo image is seen in the upper left corner of the portal after logging in.
The image dimensions are 78 x50 pixels.



Welcome Image

The welcome image is seen on the home page of the portal after login.
The image dimensions are 800 x 650 pixels.



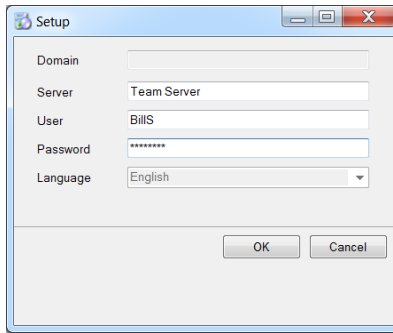
Windows Clients

Setup

Windows clients can be installed from:

- The **XLReporter** installation by setting the **Edition** to *Windows Client*.
- Copy **setup.exe** out of the *C:\XLReporter\team* folder on the server machine to a flash drive or directly to the client machine.
- Open a web browser and navigate to the URL *http://<server>/XLRweb/Setup.htm*. The *<server>* identifies the server hosting the team portal e.g., *Computer Name* or an *IP address*.

Click the **Install** button on the web page. This downloads **setup.exe** to your system.



Specify a valid **User** and **Password**, select the **Language** and click **OK** to install the software.

Note, if the website that the *XLRweb* application is installed under is not using port 80, the port number must be specified as part of the **Server** setting. For example, if the website is using port 81, the **Server** setting above would be:

TeamServer:81

Alternatively, if the IP address where used, the format would be:

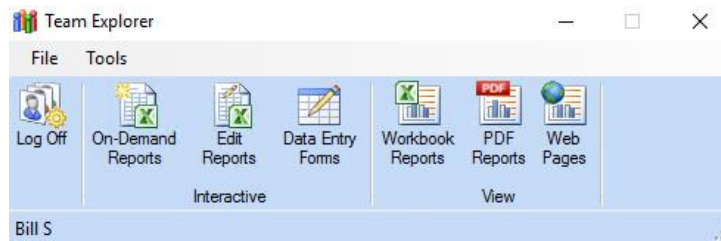
IPAddress:81

When the installation is complete, open the **Start** menu and under the **XLReporter** program group, click on **Team Explorer**. All applications are available from the **Team Explorer**.

Team Explorer

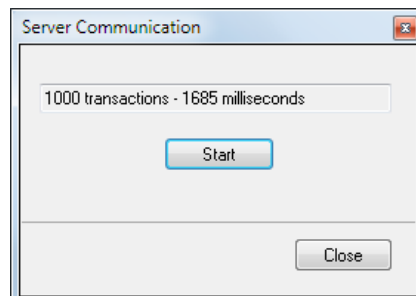
The **Team Explorer** gives easy access to the application running on the server. It is also where users log on and off the system. The **Team Explorer** must stay opened in order to remain logged in and use any of the applications provided. Once the **Team Explorer** is shut down, the user is logged off and any team application running is immediately closed.

The **Team Explorer** is opened from the **Start** menu in the **XLReporter** program group by selecting **Team Explorer**.



When opened, you are prompted to log onto the **Team Server**. Once logged in, the user name is displayed in the lower left.

To confirm the communication between the client and the Team Server, select **Tools, Test Communication**.



For more information on the applications opened from the **Team Explorer**, see the **Project Explorer** documentation.

Minimizing the Team Explorer

By default, the **Team Explorer** remains on the top of all other windows. Since it must stay open to remain logged in, you can minimize the Team Explorer to the task bar.

Information in this document is subject to change without notice. SyTech assumes no responsibility for any errors or omissions that may be in this document. No part of this document may be reproduced or transmitted in any form or by any means, electronic or mechanical, for any purpose, without the prior written permission of SyTech.

Copyright 2000 - 2023, SyTech. All rights reserved.

XLReporter® is a registered trademark of SyTech (dba of TheReportCompany, LLC).

Microsoft® and Microsoft Excel® are registered trademarks of Microsoft, Inc.
All registered names are the property of their respective owners.