

# Automation Direct Connectors

## C-more Log Files

This connector is used to get historical data from historical log files created on a C-more panel.

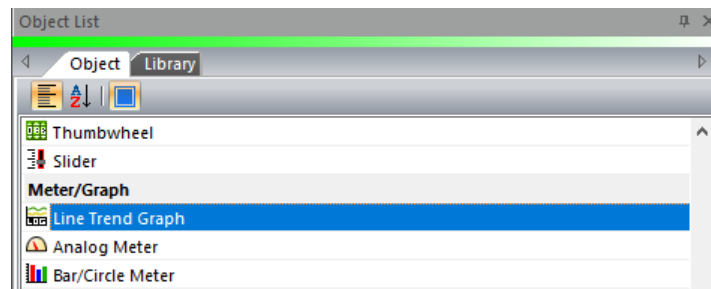
C-more's Line Trend Graph object creates files that can be accessed using a flash drive, SD card, or the FTP server running on the panel.

### Set up C-more

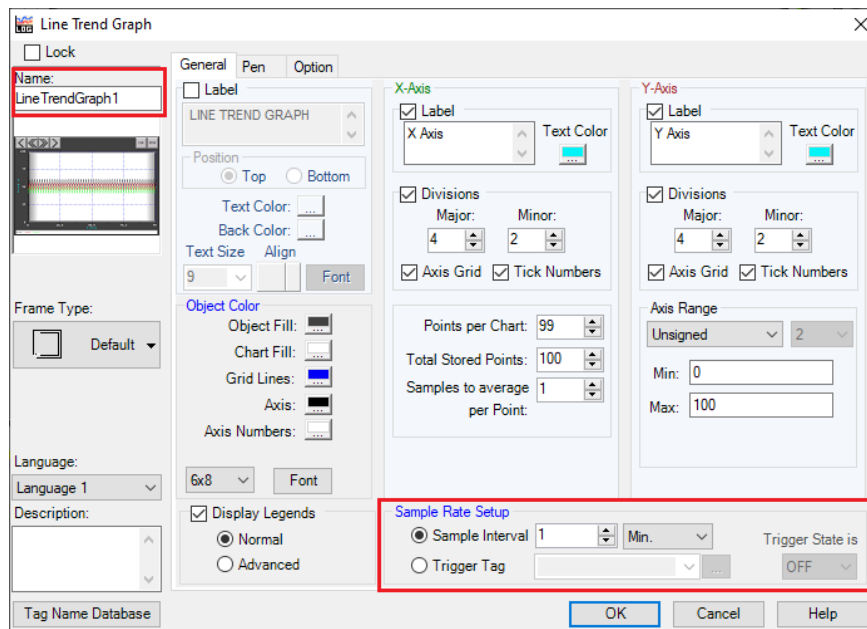
#### Configure a Line Trend Graph Object

The Line Trend Graph is used, in addition to displaying trends on the HMI, to collect data in tab-delimited files (.txt).

In the C-more Programming Software, place the **Line Trend Graph Object** on a display that cannot be closed by a user.



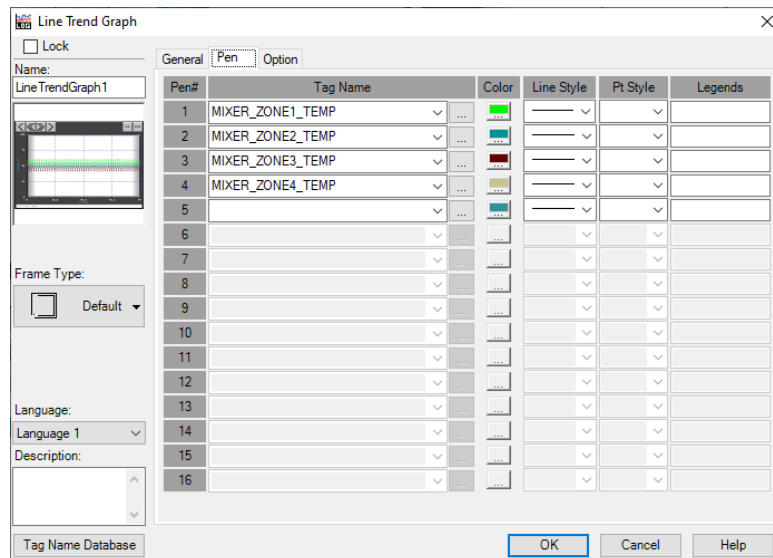
### General Tab



The **General** tab settings determine the logging behavior. To optimize reporting runtime, enable the following:

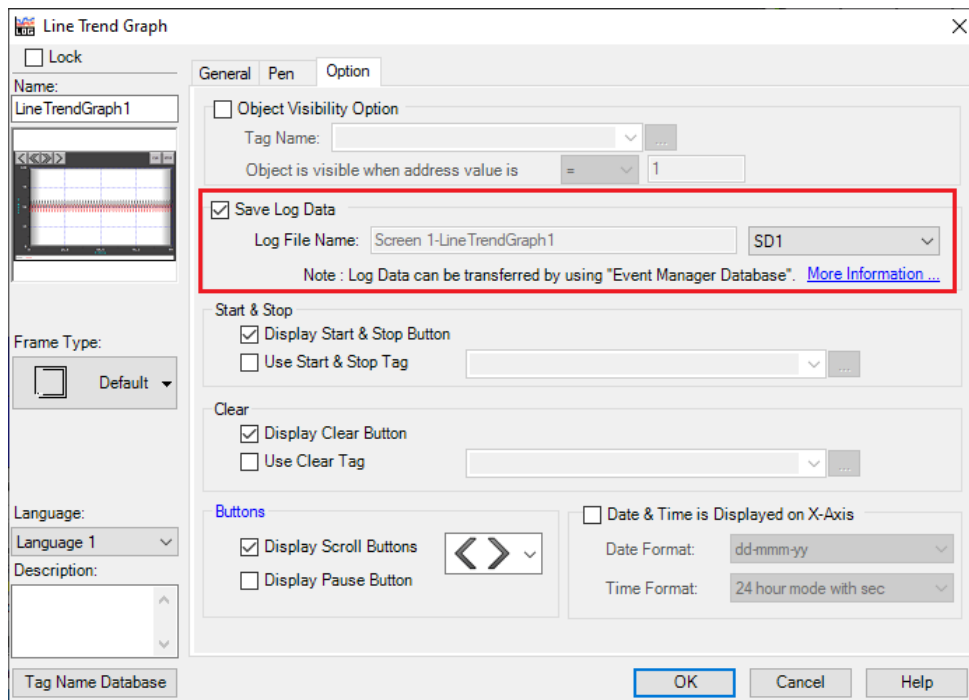
- Set **Name** to reflect the data being logged to the file. This parameter is used to name the file set.
- Configure **Sample Rate Setup** based on the reporting requirements. Higher resolution data produces more accurate summaries but reduces the performance at report runtime.

## Pen Tab



The **Pen** tab settings determine which tags connected to the C-more project are logged to the text files.

## Options Tab

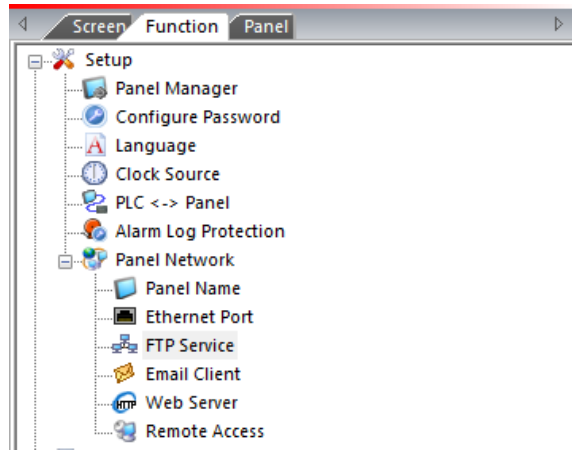


The **Option** tab settings determine where the csv files are saved.

- Enable **Save Log Data**
- Specify the location, e.g., *SD1*, *SD2*, *USB*

## Configure FTP Server

For FTP access, first enable the **Ethernet Port** from the **Function** menu. Then, enable the **FTP Service**. For more information on these functions, consult the documentation available in C-more Programming Software.



## Prerequisites

### Verify Text Files

On the C-more panel, verify that txt files have been created by the Line Trend Graph. A connector cannot be defined in XLReporter until at least one txt file is generated.

If txt files are not being generated, contact Automation Direct technical support to troubleshoot and correct this issue.

### Verify FTP Server

Open **Windows File Explorer** and navigate to:

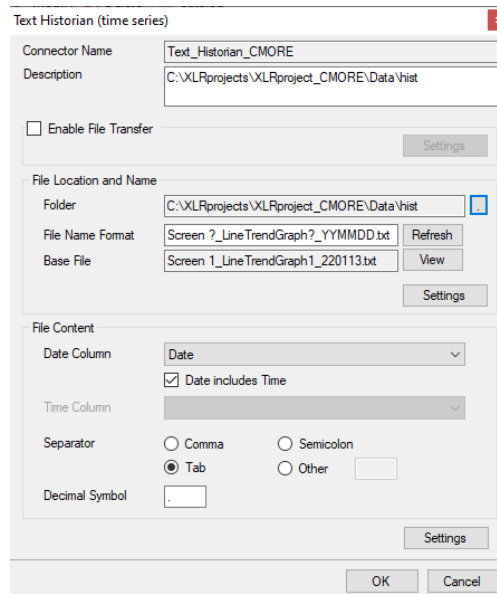
*ftp://<C-more IP Address>*

If successful, a list of files and folders on the C-more is displayed. If this cannot be done, please contact the local network administrator for further assistance.

## Connector

To configure the connector, from the **Project Explorer** select **Data, Connectors**.

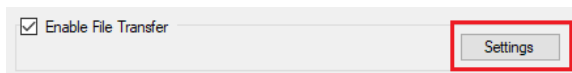
- Click **Add**
- Select **Text File, Text Historian (time series)**
- Click **OK**



For details on all the settings available for this connector, see the Text File connector document in the Document Library. The following describes the settings specific to C-more log files.

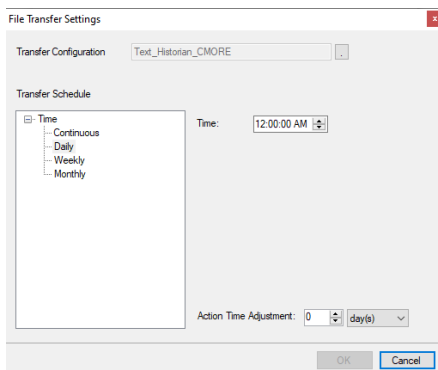
## File Transfer

Text files from the C-more panel are in a remote location and can be transferred to the local machine using the FTP server.



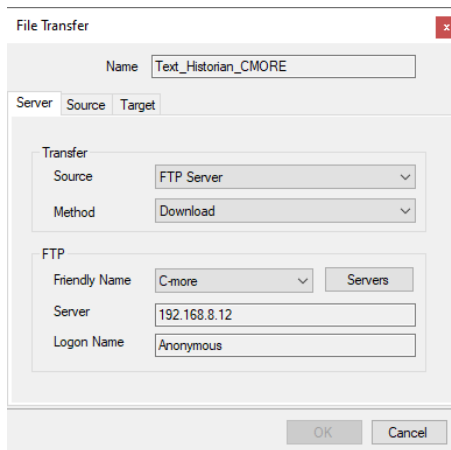
### Check **Enable File Transfer**

- Click Settings to open **File Transfer Settings**.



The **Transfer Configuration** is set to the name of the connector

- Click the browse button [...].



This configuration must be set up to *Download* the text files from the **FTP server** on the C-more panel to a **Folder** on the local system. For details on **File Transfer**, see the **Transfer Reports to an FTP Server** document in the Document Library.

### File Location and Name

Once the **File Transfer Configuration** is complete, the **Folder** defaults to the **Target Folder** on the local machine.

For **File Name Format**:

- Change this to *.txt*.
- Click **Refresh**.

The **File Name Format** is set to the fixed part of the file name along with *?\_YYMMDD* to denote a number for the file (?) the year (2 digit), month (2 digit) and day (2 digit) that changes for every file generated.

To view the latest file, click **View**.

### Settings

The format of the *Date* column in C-more log files is custom and therefore needs to be defined so that the column can be recognized as a date and time column.

Under [**consolidated.csv**]

- Add a new row
- Enter *DateTimeFormat=hh:nn:ss yyyy-MM-dd*  
Notice minutes is denoted as *nn*.

### File Content

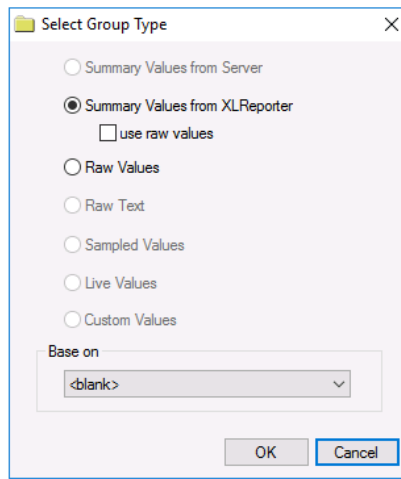
For C-more log files, the **Date Column** should be *Date* with **Date includes Time** checked.

The **Separator** should be *Tab*.

### Data Group

To extract data from the text files, a data group is used. A quick method of configuring a group is from the **Project Explorer, Tools, Connector Groups**.

#### Group Types



The following group types are available:

#### **Summary Values from XLReporter**

This type delivers calculated aggregates from the from the text file(s) such as hourly averages over a day. The group requires a set of columns, calculation types, a time period and an interval over which the calculation is performed.

By default, the aggregates are calculated on time weighted values from the file. Check **use raw values** to change the calculation to raw values from the file.

#### **Raw Values**

This type retrieves raw values logged in the text file(s). The group requires a set of columns and a time period.

## Verify the Data Connector

From the **XLReporter Project Explorer** select, **Tools, Connector Groups**.

Select the *Text Historian (time series)* connector to the C-more log files and then select **Add**.

- Set the **Type** *Raw Values* and click **OK**.

On the **Columns** tab of the group, select the tag **Name(s)**.

Select **Preview**, pick a *Start* date and click **Refresh**.

Information in this document is subject to change without notice. SyTech assumes no responsibility for any errors or omissions that may be in this document. No part of this document may be reproduced or transmitted in any form or by any means, electronic or mechanical, for any purpose, without the prior written permission of SyTech.

Copyright 2000 - 2023, SyTech. All rights reserved.

XLReporter® is a registered trademark of SyTech (dba of TheReportCompany, LLC).

Microsoft® and Microsoft Excel® are registered trademarks of Microsoft, Inc.  
All registered names are the property of their respective owners.