

Reporting from RSLinx Classic

XLReporter generates Excel based reports from Rockwell Automation® RSLinx® Classic using the current process values in the PLC.

The purpose of this document is to describe how to set up RSLinx Classic for **XLReporter**.

Process Values

XLReporter can take snapshots of the process values and add them to an existing report worksheet, periodically or on event. To prevent excessive build-up of information in a single worksheet, new workbooks and worksheets can be created automatically.

XLReporter supports data retrieval from any RSLinx Classic version that provides the RSLinx OPC Server. This includes:

- RSLinx Classic Single Node
- RSLinx Classic OEM
- RSLinx Classic Professional
- RSLinx Classic Gateway

In order to access the RSLinx OPC Server from a remote machine, you must use RSLinx Classic Gateway.

Before you Begin

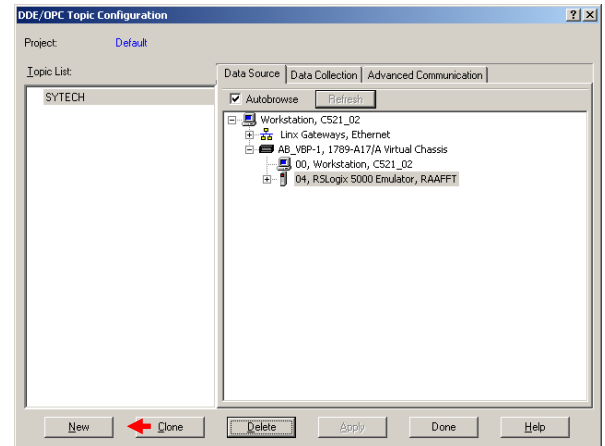
In order for **XLReporter** to communicate with RSLinx Classic, the machine where **XLReporter** is installed must also have the OPC core components installed. The OPC core components are provided in the tools folder of the **XLReporter** install CD or from www.OPCFoundation.org.

If **XLReporter** is installed on a PC that is remote to RSLinx Classic then a number of settings need to be configured on both the server and client machines. This includes having matching Windows user accounts on both machines and enabling DCOM on the machine where RSLinx Classic is installed.

For a detailed explanation of what is needed, please read the OPC Training Institute document *OPC_and_DCOM_5_things_you_need_to_know* that is provided in the Tools folder of the **XLReporter** install CD or from www.SyTech.com.

Defining a DDE/OPC Topic

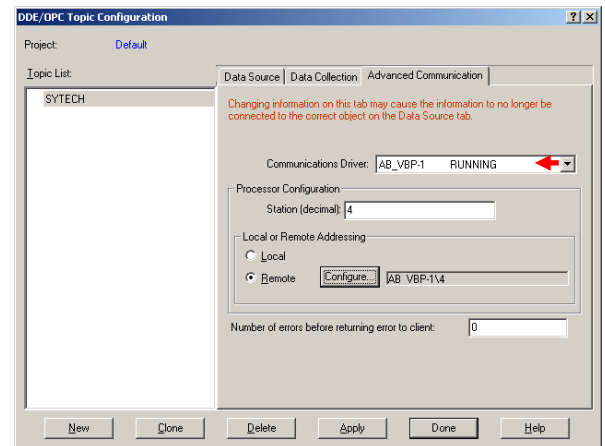
XLReporter accesses data from RSLinx Classic using an OPC Topic. Open the **RSLinx Control Panel** and select **DDE/OPC, Topic Configuration**.



DDE/OPC Topic Configuration

Select **New** and enter a name for the topic and browse to the target device for this topic. Click **Apply**.

On the **Data Collection** tab specify the **Processor Type** and the settings on the **Advanced Communication** tab.



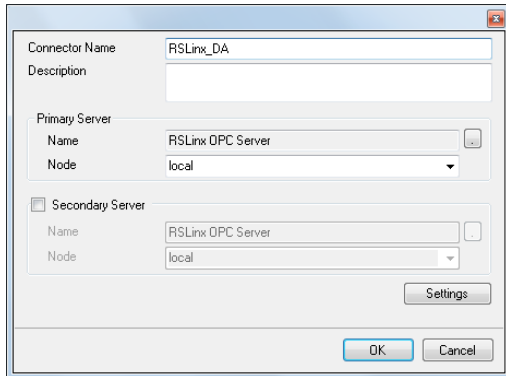
DDE/OPC Topic Configuration – Advanced Communication

Click **Done** when finished.

If RSLinx Classic Gateway is being used, a remote computer that has no installed Rockwell Automation products will have access to the PLCs.

Creating a Data Connector

To connect **XLReporter** to RSLinx, you will first need to create a **Connector**. To do this, open **XLReporter's Project Explorer**, and open **Connectors** from the **Data** tab. In **Connectors**, select **Add**, and select **Rockwell Automation, RSLinx Classic**.



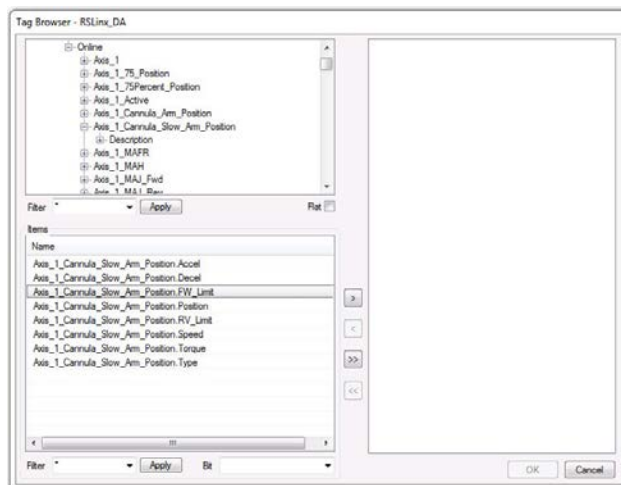
Connectors for RSLinx require a **Primary Server**. If RSLinx is on a remote machine, the **Node** must be specified. The **Node** can be selected from the drop down list or manually entered as a machine name or IP address. Otherwise, set the **Node** to *local*.

When connecting to RSLinx, the **Primary Server Name** should be *RSLinx OPC Server*.

Verifying the Data Connector

To verify that the **Data Connector** is functional, open **XLReporter's Project Explorer**. From the **Tools** tab start the **System Check** application and select the **Connector** tab.

Select **Add**, choose your RSLinx Connector from the dropdown list, and click the pushbutton ([...]) next to **Items** to open the **Tag Browser** window.



Select one or more tags and verify that they update with the current value using **Start** in the **System Check** window.

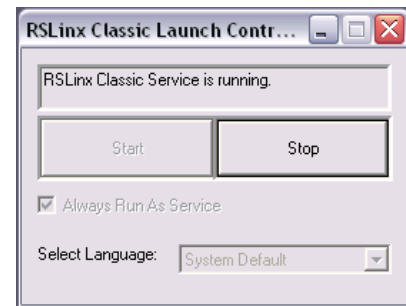
To retrieve string data from RSLinx select the string element at the top of the tag browser, and select it again in the bottom browser.

To retrieve bit data from RSLinx select the numeric field in the bottom list of the tag browser. This enables the **Bit** setting in the lower left. Select or enter the bit element needed.

Windows Service

If **XLReporter's** Scheduler is set to run as a service, RSLinx Classic must also be configured to start as a service or else if no user is logged in, the Scheduler fails to connect to the server.

To do so, from the RSLinx program group, open the **RSLinx Classic Launch Control Panel**.

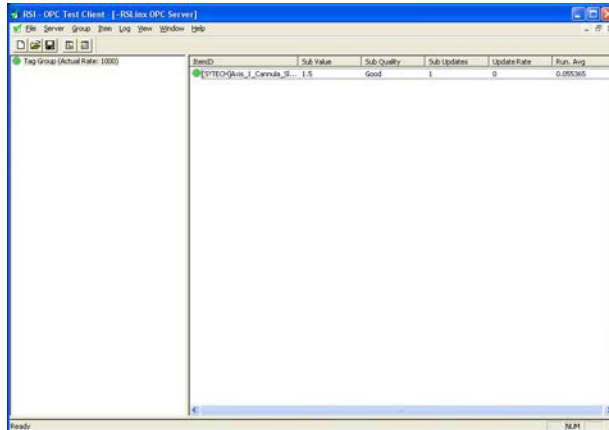


Be sure the **Always Run As Service** option is checked. If it is not, click **Stop**, check the option and click **Start**.

Troubleshooting

If you are experiencing issues connecting to or retrieving data from RSLinx with **XLReporter**, you can use the OPC Test Client provided by Rockwell Software to test the OPC server.

The **OPC Test Client** is opened from the **Rockwell Software** program group under **RSLinx, Tools, OPC Test Client**.



OPC Test Client

To connect, select **Server, Connect**. This opens the **Select an OPC Server** window. Choose *RSLinx OPC Server* and click **OK**.

Select **Group, Add Group**. Enter a **Group Name** and click **OK**.

Select **Item, Add Item** to open the **Add OPC Item** window. Select a tag by navigating in the lower left list, selecting a tag on the lower right list and clicking **Add**. When finished, click **Done** to return to the **OPC Test Client** window.

All of the selected tags appear along with their real time values, type, quality, and timestamp.

If at any point you experience an issue with this client, it is an indication that there is something wrong with the RSLinx server, since now two OPC clients have demonstrated issues.

At this point, contact Rockwell Automation technical support to troubleshoot and correct these issues.

RSLinx is a registered trademark of Rockwell Automation, Inc.