

XLReporter with Ewon Flexy

Overview

SyTech is an HMS Solution Partner providing reporting software for the Ewon Flexy using the DataMailbox and M2Web interfaces.

This document discusses the interface by producing working reports in a few minutes.

Before you Begin

Connectivity

This document assumes that you have a configured XLReporter project that is connected to the Talk2M cloud service provided by HMS. For detailed instructions on this setup, refer to the documents for M2WEB and DataMailbox, as applicable.

Evaluation License

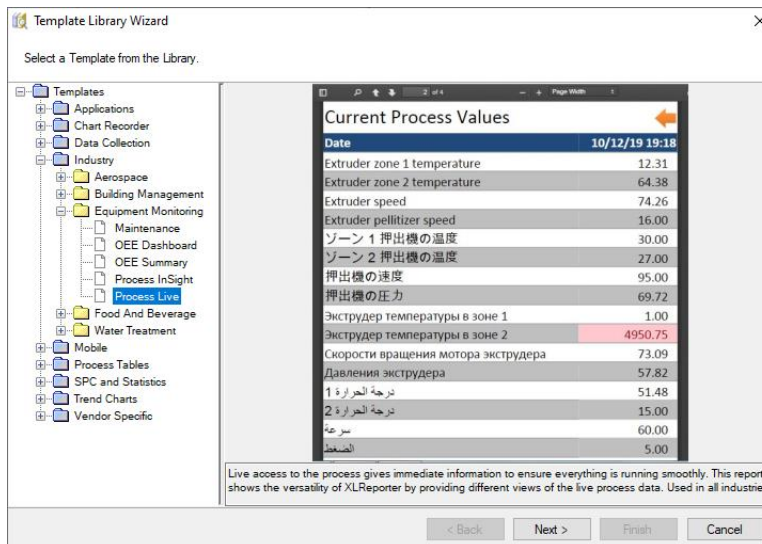
Open the **XLReporter Project Explorer** to the **Home** tab and select **Register Product**. Enter the information and select **Start Trial**. The trial mode lasts 2 hours which is extended using this application.

If you have received an evaluation license from SyTech, ignore this step.

Demonstrate with M2WEB

The M2WEB interface offers access to live values connected to Ewon Flexy device(s). This is a simple, easy-to-use reporting method that provides data with very little configuration of both the Flexy and XLReporter.

Live Dashboard



Template Library Wizard

Select a Template from the Library.

Templates

- Applications
- Chart Recorder
- Data Collection
- Industry
 - Aerospace
 - Building Management
 - Equipment Monitoring
 - Maintenance
 - OEE Dashboard
 - OEE Summary
 - Process InSight
 - Process Live**
 - Food And Beverage
 - Water Treatment
- Mobile
- Process Tables
- SPC and Statistics
- Trend Charts
- Vendor Specific

Current Process Values

Date: 10/12/19 19:18

Extruder zone 1 temperature	12.31
Extruder zone 2 temperature	64.38
Extruder speed	74.26
Extruder pelletizer speed	16.00
ゾーン 1 押出機の温度	30.00
ゾーン 2 押出機の温度	27.00
押出機 の速度	95.00
押出機 の圧力	69.72
Экструдер температуры в зоне 1	1.00
Экструдер температуры в зоне 2	4950.75
Скорости вращения мотора экструдера	73.09
Давления экструдера	57.82
درجة الحرارة 1	51.48
درجة الحرارة 2	15.00
سرعة	60.00
الضغط	5.00

Live access to the process gives immediate information to ensure everything is running smoothly. This report shows the versatility of XLReporter by providing different views of the live process data. Used in all industries.

< Back Next > Finish Cancel

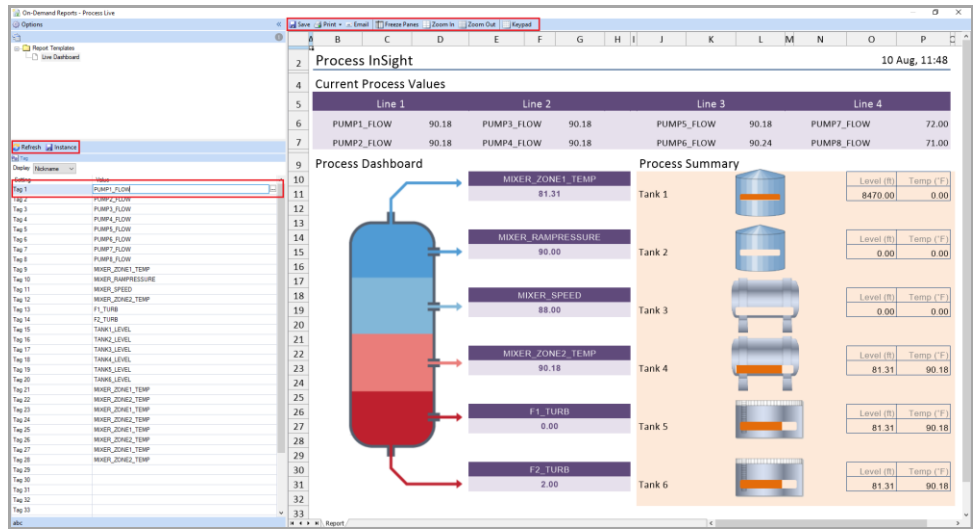
This template allows the user to select a set of tags from one or more Flexy devices to display live data snapshot.

To access the **Process Live** template, open **Home tab, Library**:

- Click **Next**.

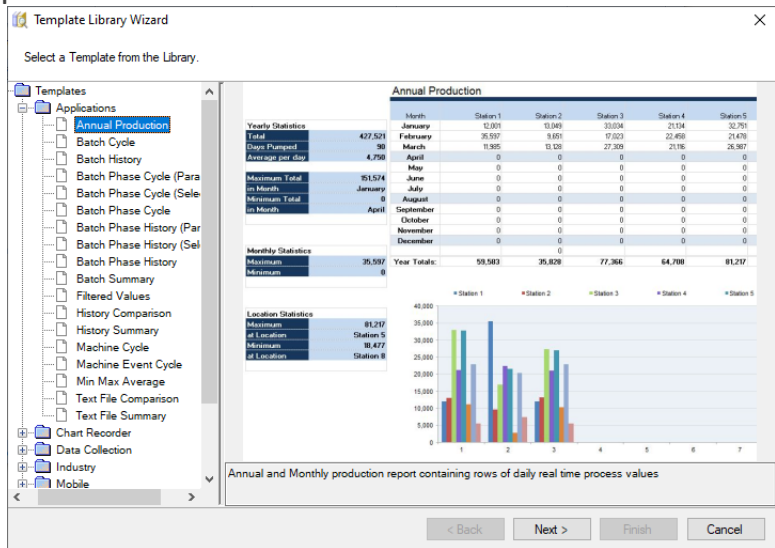
- Select **Industry, Equipment Monitoring, Process Live**.
- Click **Next**.
- Assign a **Name** for the template, e.g., *Live Dashboard*.
- Set **Real Time connector** to the M2WEB connector.
- Click **Next**
- Click **Finish**.

The template is added to the XLReporter project. To generate a report, open **Home tab** and then **On-Demand Reports**:



- Select tags using the [...] browser menu.
- Click **Refresh**.
- Each time the dashboard is refreshed, live values are collected from the device(s).
- The icons at the top of the client window can be used to save the report as an excel file or PDF.

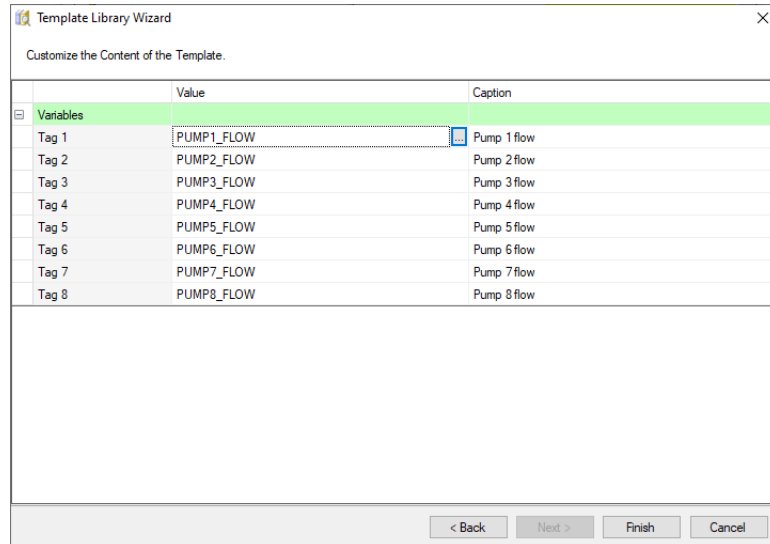
Annual Production Report



This template demonstrates a report that is populated over a period time. In this example, flow totals are collected every day of the year to populate 12 monthly sheets which are summarized on a yearly sheet. Note that when XLReporter captures the values each day, it determines the worksheet and row to place the data.

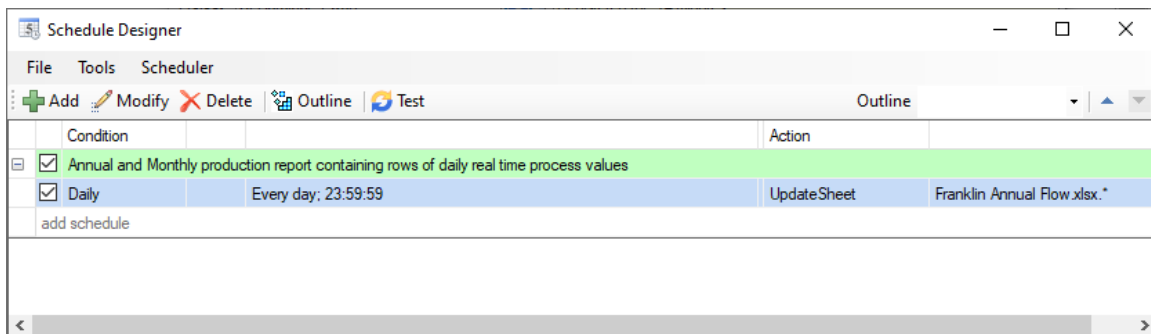
To access the **Annual Production** template, open **Home tab, Library**:

- Click **Next**.
- Select **Applications, Annual Production**.
- Click **Next**.
- Assign a **Name** for the template, e.g. *[Your City] Annual Flow*.
- Set **Real Time connector** to the M2WEB connector.
- Click **Next**



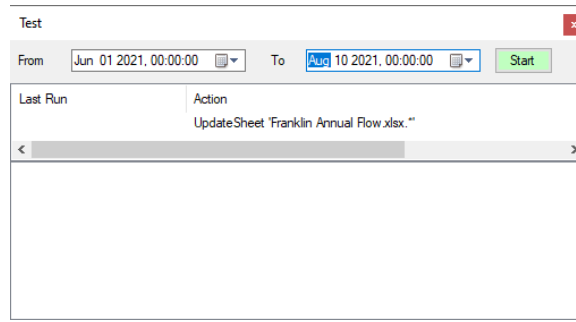
- Select tags by opening the [...] browser menu.
- Click **Finish**.

The **Schedule Designer** is opened. Notice that the report is scheduled to be updated automatically *Every Day at 23:59:59*.

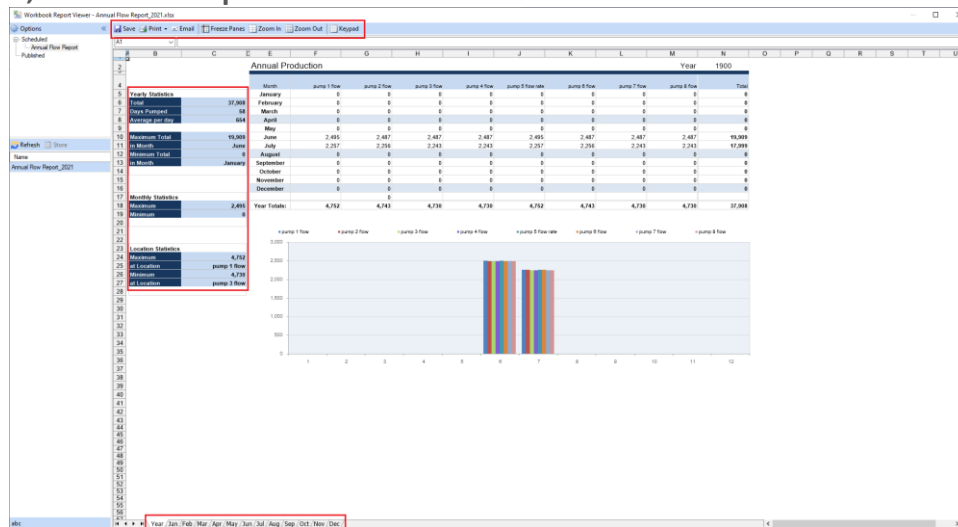


A powerful feature of XLReporter is to run the scheduler for the past which can be used with historical data to backfill reports. In this case, this feature is used to demonstrate the output once the scheduler is running.

- Highlight the line that updates the report.
- Click **Test**.



- Set a date range using the **From** and **To** calendar controls (a period of at least one month works best).
- Click **Start** and wait for the updates to finish.
- Close **Test**.
- Close **Schedule Designer**.
- Open **Home** tab, **Workbook Reports**.

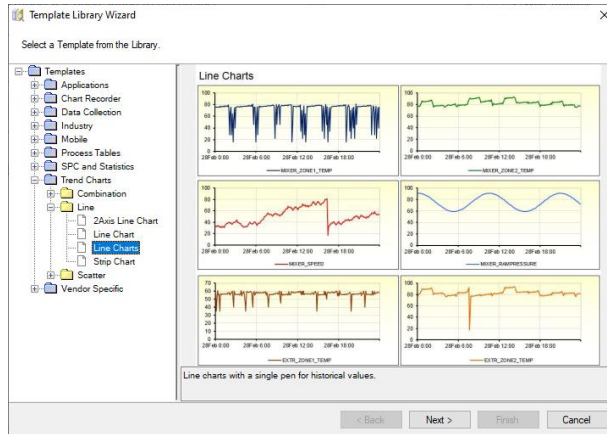


- Note the annual summary sheet is displayed by default.
- Note the tab controls at the bottom of the window are used to display the monthly report sheets.
- Note that summary information is provided noting information such as the min and max flow.
- The controls at the top of the window allow the report to be saved as an Excel file or PDF.

Demonstrate DataMailbox

The DataMailbox interface provides access to history and alarm data that is being collected by the device and transferred in blocks to the XLReporter database.

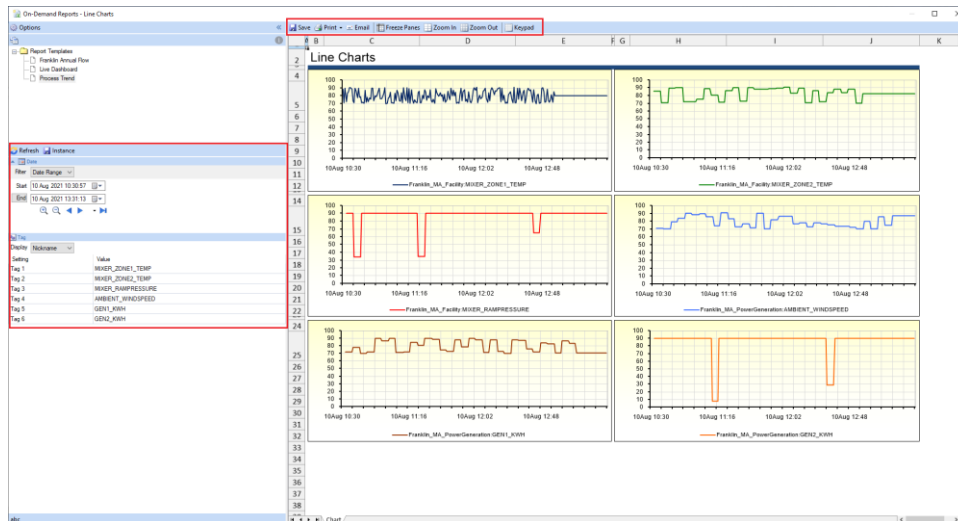
Trend Report



This template demonstrates trends of a selection of tags from one or more devices. To access the **Line Charts** template, open **Home tab, Library**:

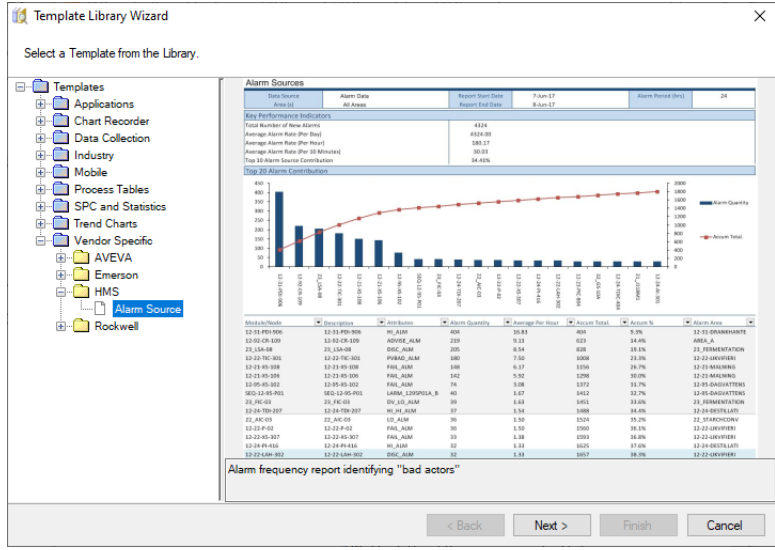
- Click **Next**.
- Select **Trend Charts, Line, Line Charts**.
- Click **Next**.
- Assign a **Name** for the template, e.g., *Process Trend*.
- Set **History connector** to the Data Mailbox connector.
- Click **Next**
- Click **Finish**.

On-Demand Reports is opened automatically when the **Library** wizard is finished.



- Select tags using the [...] browser menu. These will be the tags that have been configured for data logging in the device.
- Select the time period using the Calendar Controls.
- Click **Refresh**.
- The icons at the top of the client window can be used to save the report as an excel file or PDF.

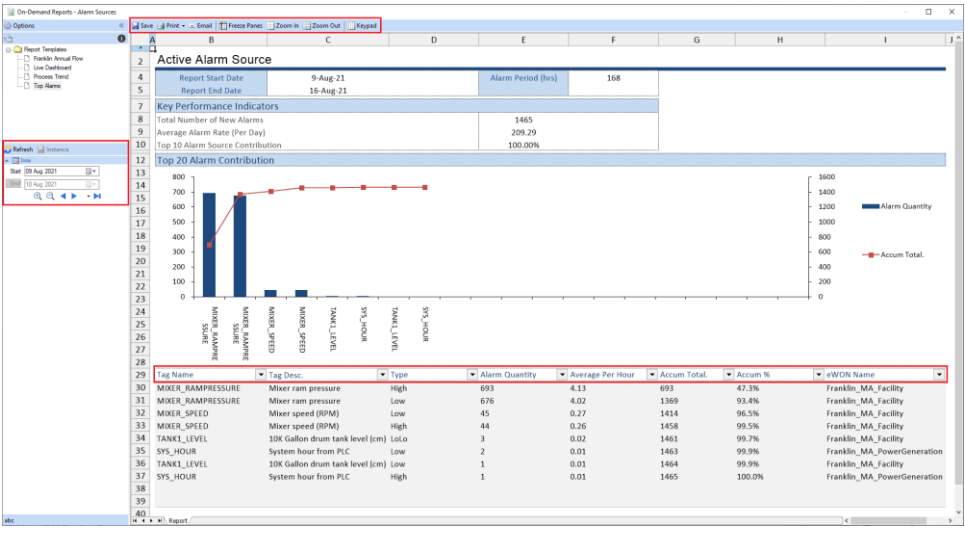
Top Alarms Dashboard



This template demonstrates a report of alarm metrics from one or more devices. To access the **Alarm Source** template, open **Home tab, Library**:

- Click **Next**.
- Select **Vendor Specific, HMS, Alarm Source**.
- Click **Next**.
- Assign a **Name** for the template, e.g., *Top Alarms*.
- Set **Mailbox connector** to the name of the DataMailbox connector.
- Click **Next**
- Click **Finish**.

On-Demand Reports is opened automatically when the **Library** wizard is finished.



- Select the time period using the **Calendar** Control.
- Click **Refresh**.
- Data filters can be applied using the buttons on the data column headings. This can be used to filter for all alarms on a specific device, all alarms of a certain type across all devices, etc.
- The icons at the top of the client window can be used to save the report as an excel file or PDF.